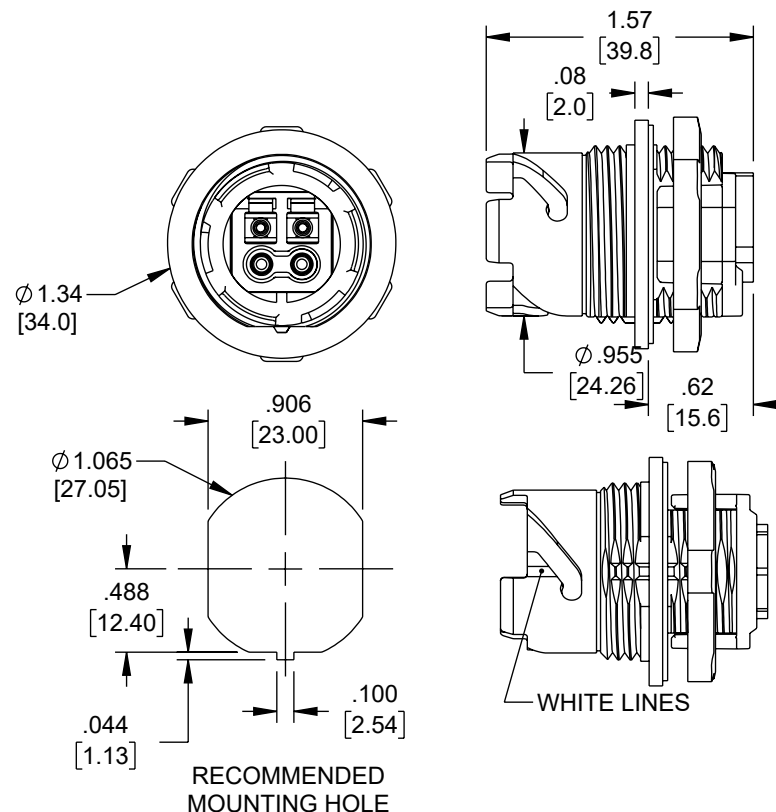
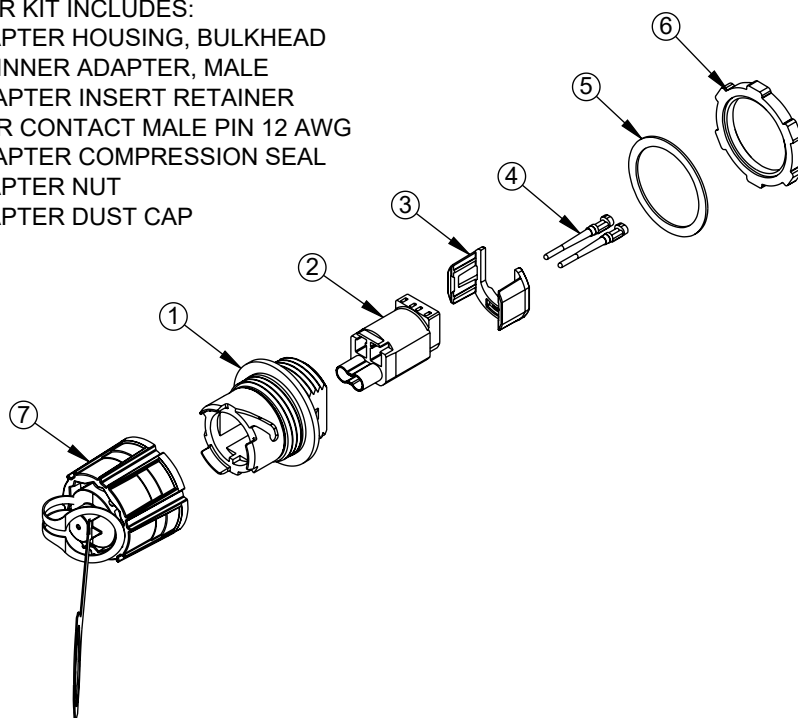


THE INFORMATION CONTAINED IN THIS DRAWING IS THE SOLE PROPERTY OF L-COM, INC. ANY REPRODUCTION IN PART OR WHOLE WITHOUT THE WRITTEN PERMISSION OF L-COM, INC. IS PROHIBITED.

REVISION					
ZONE	REV.	DESCRIPTION	DATE	CHANGED BY	APPROVED BY
	A	INITIAL RELEASE	08/10/2023	BPUCHASKI	PHOSPODAR

ADAPTER KIT INCLUDES:

1. P ADAPTER HOUSING, BULKHEAD
2. IP LC INNER ADAPTER, MALE
3. IP ADAPTER INSERT RETAINER
4. POWER CONTACT MALE PIN 12 AWG
5. IP ADAPTER COMPRESSION SEAL
6. IP ADAPTER NUT
7. IP ADAPTER DUST CAP

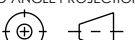


NOTES:

1. COMPONENT SHALL BE INDIVIDUALLY PACKAGED IN ACCORDANCE WITH L-COM SPECIFICATION PS-0031

REGULATORY COMPLIANCE:

EU ROHS DIRECTIVE (MOST RECENT RELEASED VERSION)

UNLESS OTHERWISE SPECIFIED, DIMENSIONS ARE IN INCHES [mm]		APPROVALS		DATE		<div><div>L-com™</div><div>an INFINIT® brand</div></div> <div>50 High Street, West Mill, North Andover, MA 01845 USA Phone: 1.800.341.5266 1.978.682.6936</div>	
OVERALL CABLE LENGTH TOLERANCE: ≤12 [305] = +1 [25] / -0 >12 [305] ≤60 [1524] = +2 [51] / -0 >60 [1524] ≤120 [3048] = +4 [102] / -0 >120 [3048] ≤300 [7620] = +6 [152] / -0 >300 [7620] = +5% / -0		DRAWN BY BPUCHASKI		08/10/2023			
		CHECKED BY REVANGELIS		08/10/2023			
		APPROVED BY PHOSPODAR		08/10/2023			
ALL OTHER DIMENSIONAL TOLERANCES: .X = ± .2 [5] .XX = ± .02 [.5] .XXX = ± .005 [.13]		CONFIGURATION DETAILS OF UNDIMENSIONED FEATURES MAY VARY		CATEGORY		FIBER OPTICS	
THIRD-ANGLE PROJECTION 		COLOR VARIATIONS MAY OCCUR		PRODUCT DESCRIPTION IP68 HYBRID LC ADAPTER, PIN CONTACTS (MALE) WITH DUST CAP			
				SIZE A	CAGE CODE 43321	ITEM NO. FOA-LCHBP-D	REV. A
				SCALE: NONE		CAD FILE: FOA-LCHBP-D.SLDDRW	SHEET 1 OF 1