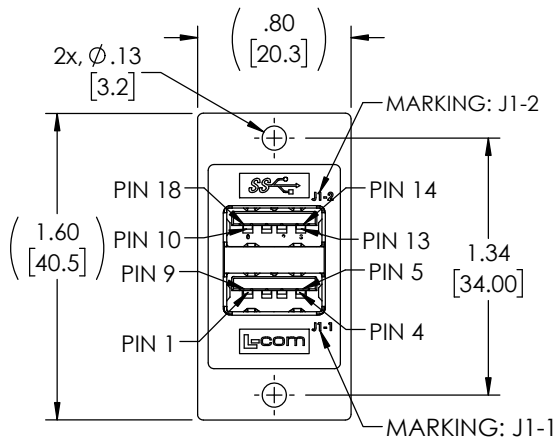
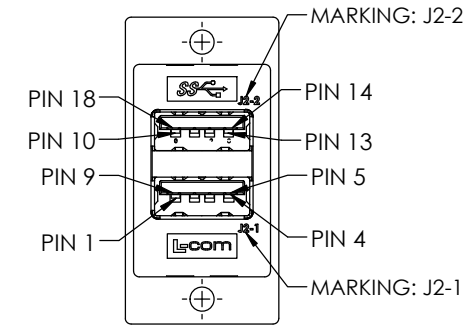
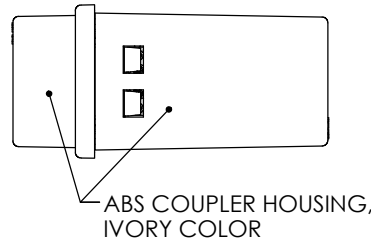
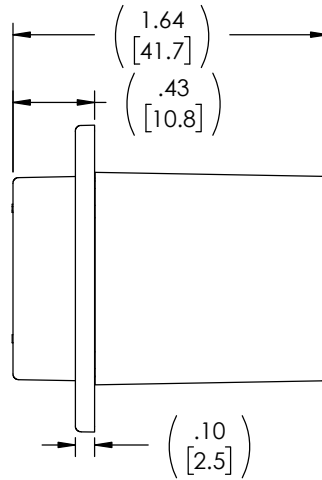


THE INFORMATION CONTAINED IN THIS DRAWING IS THE SOLE PROPERTY OF L-COM, INC. ANY REPRODUCTION IN PART OR WHOLE WITHOUT THE WRITTEN PERMISSION OF L-COM, INC. IS PROHIBITED.

REVISION					
ZONE	REV	DESCRIPTION	DATE	CHANGED BY	APPROVED
	A	INITIAL RELEASE	08/22/2023	BZHANG	GUATTADAURO

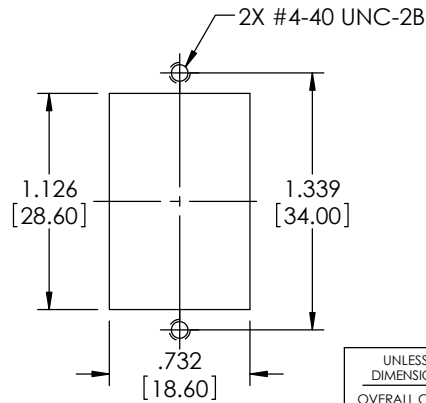


"J1"  
DOUBLE STACKED USB 3.0 TYPE "A"  
FEMALE CONNECTOR  
30u" GOLD PLATED CONTACTS  
NICKEL PLATED SHELL



"J2"  
DOUBLE STACKED USB 3.0 TYPE "A"  
FEMALE CONNECTOR  
30u" GOLD PLATED CONTACTS  
NICKEL PLATED SHELL

"J1"	WIRING MAP	"J2"
1	_____	1
2	_____	2
3	_____	3
4	_____	4
5	_____	8
6	_____	9
7	_____	7
8	_____	5
9	_____	6
10	_____	10
11	_____	11
12	_____	12
13	_____	13
14	_____	17
15	_____	18
16	_____	16
17	_____	14
18	_____	15
SHELL	_____	SHELL



RECOMMENDED  
PANEL CUTOUT

**NOTES:**

- RATING:**  
CURRENT: 1.8A (P1,P4,P10, P13 CONTACTS);  
0.25A(REMAINING CONTACTS)  
OPERATING TEMPERATURE: -10°C TO +70°C.
- COUPLER SHALL BE TESTED FOR CONTINUITY.
- COUPLER SHALL BE INDIVIDUALLY PACKAGED IN ACCORDANCE WITH L-COM PACKAGING SPEC PS-0031.

UNLESS OTHERWISE SPECIFIED, DIMENSIONS ARE IN INCHES [mm] OVERALL CABLE LENGTH TOLERANCE: ≤12 [305] = +1 [25] / -0 >12 [305] ≤60 [1524] = +2 [51] / -0 >60 [1524] ≤120 [3048] = +4 [102] / -0 >120 [3048] ≤300 [7620] = +6 [152] / -0 >300 [7620] = +5% / -0 ALL OTHER DIMENSIONAL TOLERANCES: .X = ± .2 [5]   FRACTIONS ± 1/32 .XX = ± .02 [5]   ANGLES ± 1° .XXX = ± .005 [13]	APPROVALS	DATE	 50 High Street, West Mill, North Andover, MA 01845 USA. Phone: 1.800.341.5266 1.978.682.6936
	DRAWN BY B.ZHANG	01/21/2022	
THIRD-ANGLE PROJECTION 	CHECKED BY GUATTADAURO	01/21/2022	CATEGORY <b>USB</b>
	APPROVED BY GUATTADAURO	01/21/2022	PRODUCT DESCRIPTION <b>ECF DOUBLE STACK CPLR, USB 3.0 AF-AF, IVORY</b>
	CONFIGURATION DETAILS OF UNDIMENSIONED FEATURES MAY VARY		SIZE <b>A</b>
	COLOR VARIATIONS MAY OCCUR		CAGE CODE <b>43321</b>
			DWG. NO. <b>ECF504-3DSAA-IVY</b>
			REV. <b>A</b>
			SCALE: NONE
			CAD FILE: ECF504-3DSAA-IVY.SLDDRW
			SHEET 1 OF 1