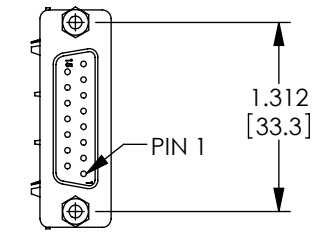


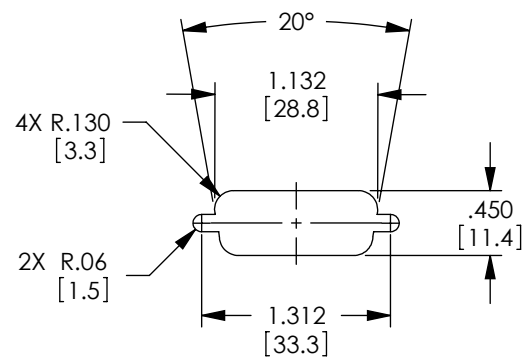
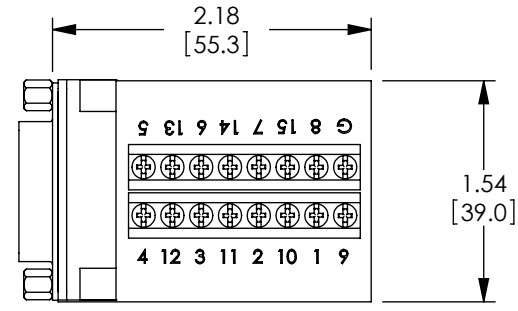
THE INFORMATION CONTAINED IN THIS DRAWING IS THE SOLE PROPERTY OF L-COM, INC. ANY REPRODUCTION IN PART OR WHOLE WITHOUT THE WRITTEN PERMISSION OF L-COM, INC. IS PROHIBITED.

REVISIONS			
REV	DESCRIPTION	DATE	APPROVED
A	INITIAL RELEASE	12/18/08	D.GRIFFIN
B	ECN 4308: ADDED VOLTAGE, AMP AND PACKAGING NOTES	10/12/09	D.FRISIELLO
C	ECN 5463: ADDED PANEL CUTOUT	4/26/11	D. CASTRO

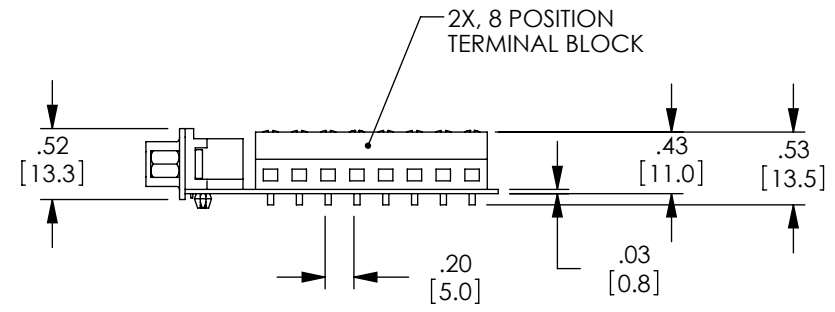
WIRING TABLE	
DB15 F	TERMINAL BLOCK #
1	1
2	2
3	3
4	4
5	5
6	6
7	7
8	8
9	9
10	10
11	11
12	12
13	13
14	14
15	15
GROUND	16



DB15 FEMALE D-SUB CONNECTOR



RECOMMENDED PANEL OPENING (MAX PANEL THICKNESS: 0.06")



**RoHS Compliant** ✓

UNLESS OTHERWISE SPECIFIED, DIMENSIONS ARE IN INCHES [mm] OVERALL CABLE LENGTH TOLERANCE: ≤12 [305] = +1 [25] / -0 >12 [305] ≤60 [1524] = +2 [51] / -0 >60 [1524] ≤120 [3048] = +4 [102] / -0 >120 [3048] ≤300 [7620] = +6 [152] / -0 >300 [7620] = +3% / -0% ALL OTHER DIMENSIONAL TOLERANCES: .X = ±.2 .XX = ±.02 .XXX = ±.005	APPROVALS DRAWN BY D.FRISIELLO	DATE 12/18/08		45 BEECHWOOD DRIVE NORTH ANDOVER, MA 01845		
	CHECKED BY D.FORTIN	DATE 12/18/08		CATEGORY DATA		
PROJECTION 	CONFIGURATION DETAILS OF UNDIMENSIONED FEATURES MAY VARY	PRODUCT DESCRIPTION FIELD INSTALLABLE DGB15FT	SIZE <b>A</b>	FSCM NO. <b>43321</b>	DWG. NO. DGB15FT	REV. <b>C</b>
		COLOR VARIATIONS MAY OCCUR	SCALE: NONE	CAD FILE: DGB15FT.SLDDRW	SHEET 1 OF 1	

NOTES:  
 VOLTAGE RATING: 1000V AC AND 500V DC.  
 CURRENT RATING: 3 AMPS  
 COMPONENT ASSEMBLY SHALL BE INDIVIDUALLY PACKAGED IN ACCORDANCE WITH L-COM SPECIFICATION PS-0031.