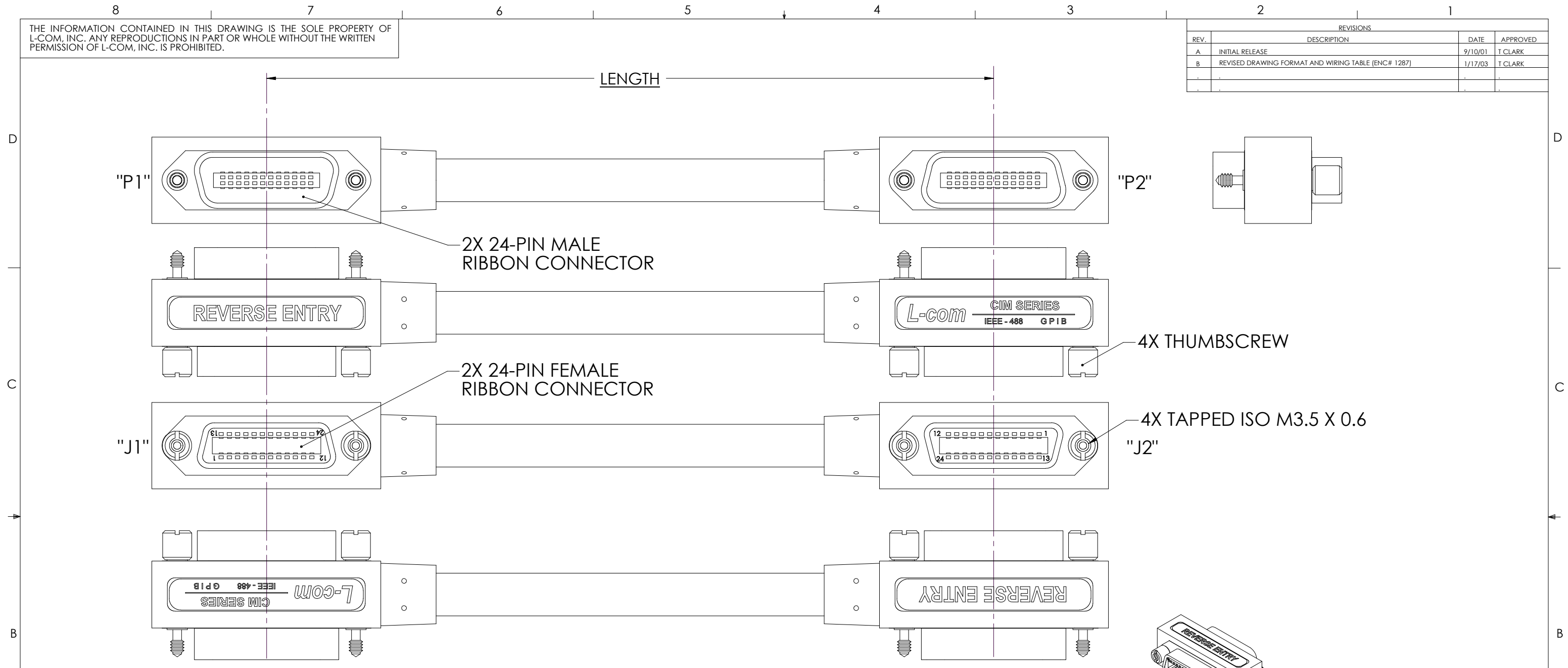


THE INFORMATION CONTAINED IN THIS DRAWING IS THE SOLE PROPERTY OF L-COM, INC. ANY REPRODUCTIONS IN PART OR WHOLE WITHOUT THE WRITTEN PERMISSION OF L-COM, INC. IS PROHIBITED.

| REVISIONS |   |         |          |
|-----------|---|---------|----------|
| REV.      | DESCRIPTION   | DATE    | APPROVED |
| A         | INITIAL RELEASE                                     | 9/10/01 | T CLARK  |
| B         | REVISED DRAWING FORMAT AND WIRING TABLE [ENC# 1287] | 1/17/03 | T CLARK  |
|           |   |         |          |
|           |   |         |          |



**SPECIFICATIONS:**  
MEETS REQUIREMENTS OF ANSI/IEEE STD 488.1-1987.

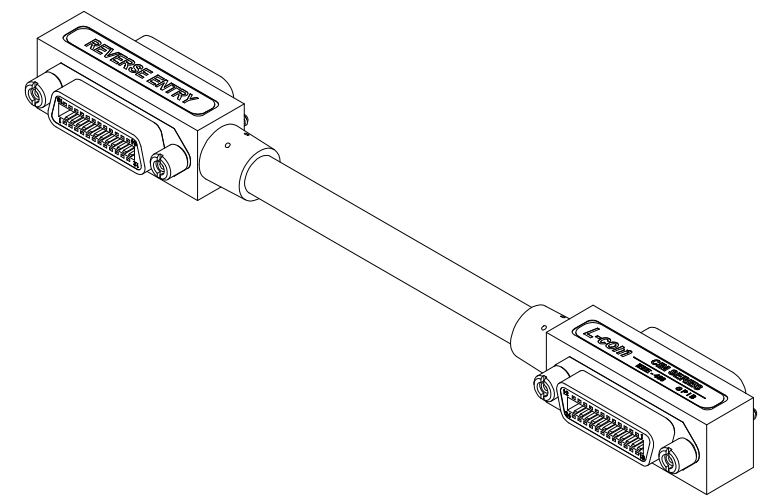
**MATERIALS:**  
CABLE: U.L. STYLE 2464, TWELVE TWISTED PAIRS 26AWG STRANDED COPPER, OVERALL DOUBLE SHIELD ALUMINIZED POLYESTER FOIL PLUS BRAIDED TINNED COPPER WITH 2 DRAIN WIRES, BEIGE PVC JACKET.

**MOLDINGS:** POLYVINYLCHLORIDE, BEIGE  
**CONNECTOR INSULATORS:** GLASS-FILLED PBT (BLUE), UL94V-0  
**CONNECTOR CONTACTS:** COPPER ALLOY, 30 MICROINCHES GOLD OVER NICKEL  
**CONNECTOR SHELL:** STAMPED STEEL OR DIE-CAST ALLOY, NICKEL PLATED  
**THUMBSCREWS:** ISO M3.5 X.0.6, STEEL, BLACK OXIDE FINISH

**ENVIRONMENTAL:**  
OPERATING TEMPERATURE RANGE: -20°C TO + 80°C

| MODEL NUMBER | LENGTH |       |
|--------------|--------|-------|
|              | METERS | FEET  |
| CIM24-05M    | 0.5    | 1.64  |
| CIM24-1M     | 1.0    | 3.28  |
| CIM24-2M     | 2.0    | 6.56  |
| CIM24-3M     | 3.0    | 9.84  |
| CIM24-4M     | 4.0    | 13.12 |
| CIM24-5M     | 5.0    | 16.40 |
| CIM24-6M     | 6.0    | 19.68 |
| CIM24-8M     | 8.0    | 26.24 |

UNLESS OTHERWISE SPECIFIED DIMENSIONS ARE IN INCHES TOLERANCES ARE:  
 X ±.1  
 .XX ±.05  
 .XXX ±.005  
 CABLE LENGTH TOLERANCE  
 <300" ±5% >300" ±2%



| APPROVALS                | DATE      |
|--------------------------|-----------|
| DRAWN BY<br>T CLARK      | 8/24/2001 |
| CHECKED BY<br>D PARHAM   | 9/7/2001  |
| APPROVED BY<br>R CARRICK | 9/10/2001 |

**L-com** CONNECTIVITY PRODUCTS 45 BEECHWOOD DRIVE NORTH ANDOVER, MA 01845

PRODUCT DESCRIPTION  
MOLDED IEEE-488 GPIB CABLE ASSEMBLY

DRAWING TITLE  
**OUTLINE DRAWING**

|                  |                          |                               |                  |
|------------------|--------------------------|-------------------------------|------------------|
| SIZE<br><b>B</b> | FSCM NO.<br><b>43321</b> | DWG. NO.<br>CIM24-05M-OD1     | REV.<br><b>B</b> |
| SCALE 1:1        |                          | CAD FILE: CIM24-05M-OD1.SLDRW | SHEET 1 OF 2     |

THE INFORMATION CONTAINED IN THIS DRAWING IS THE SOLE PROPERTY OF L-COM, INC. ANY REPRODUCTION IN PART OR WHOLE WITHOUT THE WRITTEN PERMISSION OF L-COM, INC. IS PROHIBITED.

| REVISIONS |   |         |          |
|-----------|---|---------|----------|
| REV.      | DESCRIPTION   | DATE    | APPROVED |
| A         | INITIAL RELEASE                                     | 9/10/01 | T CLARK  |
| B         | REVISED DRAWING FORMAT AND WIRING TABLE [ENC# 1287] | 1/17/03 | T CLARK  |
|           |   |         |          |
|           |   |         |          |

| WIRING TABLE |            |            |                |
|--------------|------------|------------|----------------|
| PAIR NUMBER  | J1/P1      | J2/P2      | FUNCTION       |
| 1            | 1          | 1          | DATA LINE DI01 |
|              | 14         | 14         | DATA LINE DI02 |
| 2            | 2          | 2          | DATA LINE DI03 |
|              | 3          | 3          | DATA LINE DI04 |
| 3            | 4          | 4          | DATA LINE DI05 |
|              | 13         | 13         | DATA LINE DI06 |
| 4            | 15         | 15         | DATA LINE DI07 |
|              | 16         | 16         | DATA LINE DI08 |
| 5            | 5          | 5          | EOI            |
|              | 24         | 24         | EOI RETURN     |
| 6            | 6          | 6          | DAV            |
|              | 18         | 18         | DAV RETURN     |
| 7            | 7          | 7          | NRFD           |
|              | 19         | 19         | NRDF RETURN    |
| 8            | 8          | 8          | NDAC           |
|              | 20         | 20         | NDAC RETURN    |
| 9            | 9          | 9          | IFC            |
|              | 21         | 21         | IFC RETURN     |
| 10           | 10         | 10         | SRQ            |
|              | 22         | 22         | SRQ RETURN     |
| 11           | 11         | 11         | ATN            |
|              | 23         | 23         | ATN RETURN     |
| 12           | 17         | 17         | REN            |
|              | 24         | 24         | REN RETURN     |
| DRAIN WIRE   | 12 & SHELL | 12 & SHELL | SHIELD         |

CABLE CONSTRUCTION COMPLIES WITH L-COM SPECIFICATION CMB-CS1.

|  |                   |  |                  |
|--|-------------------|--|------------------|
| <b>L-com</b><br>CONNECTIVITY PRODUCTS                      |                   | 45 BEECHWOOD DRIVE<br>NORTH ANDOVER, MA<br>01845 |                  |
| PRODUCT DESCRIPTION<br>MOLDED IEEE-488 GPIB CABLE ASSEMBLY |                   |  |                  |
| DRAWING TITLE<br><b>OUTLINE DRAWING</b>                    |                   |  |                  |
| SIZE<br><b>B</b>   | FSCM NO.<br>43321 | DWG. NO.<br>CIM24-05M-OD1                        | REV.<br><b>B</b> |
| SCALE 1:1  |                   | CAD FILE<br>CIM24-05M-OD1.SLDDRW                 | SHEET 2 OF 2     |