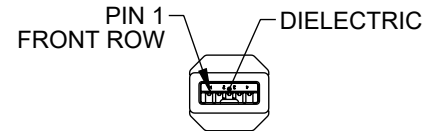
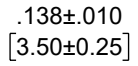
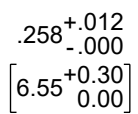
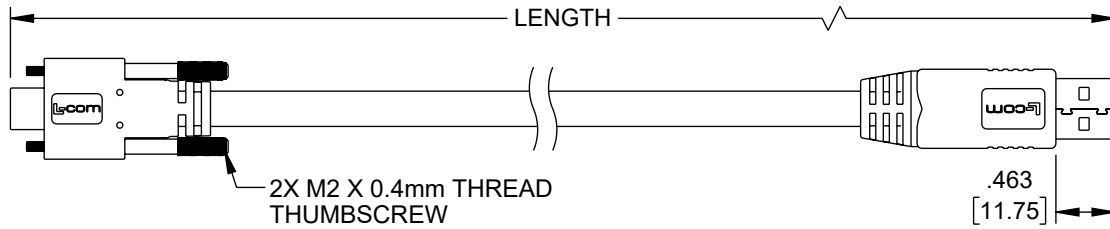
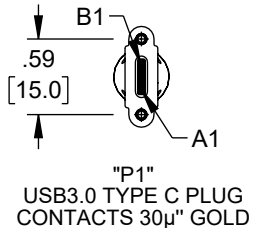


| REVISION | | | | | |
|----------|-----|-----------------|-----------|------------|-------------|
| ZONE | REV | DESCRIPTION | DATE | CHANGED BY | APPROVED |
| | A | INITIAL RELEASE | 1/25/2024 | DMAY | DGUTTADAURO |



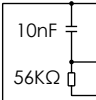
2X MOLDED HOOD AND STRAIN RELIEF, PVC, BLACK

"P2" USB 3.0 TYPE A PLUG CONTACTS 30µ" GOLD

| WIRING MAP | | | |
|---------------|--------------------------------|-------|--------|
| "P1" | CONDUCTOR | "P2" | COLOR |
| A1,B1,A12,B12 | SHIELDED PAIR DRAIN 1, DRAIN 2 | 7 | N/A |
| A4,B4,A9,B9 | UNSHIELDED PAIR | 4 | BLACK |
| A5 | N/C | 1 | RED |
| A6 | UNSHIELDED PAIR | 3 | GREEN |
| A7 | | 2 | WHITE |
| A2 | SHIELDED PAIR 1 | 6 | YELLOW |
| A3 | | 5 | BLUE |
| B11 | SHIELDED PAIR 2 | 9 | ORANGE |
| B10 | | 8 | GREEN |
| SHELL | BRAID | SHELL | N/A |

UL STYLE 20276, USB3.0 HIGH FLEX CABLE, (2) TWISTED PAIR, 28AWG WITH ALUM/POLY, DRAIN WIRE AND SPIRAL SHIELD, (1) UNSHIELDED TWISTED PAIR, 26AWG, (1) UNSHIELDED TWISTED PAIR, 22AWG, OVERALL ALUM/POLY AND BRAIDED SHIELD, JACKET: PVC, BLACK (NOM DIA. .276" [7.0]; FLAME RATING: UL VW-1; MIN. FIXED BEND RADIUS: 5X O.D.; MIN. MOVING BEND RADIUS: 10X O.D.)

| PART NUMBER | LENGTH METERS [FEET] |
|--------------------|----------------------|
| CAU3HFACV-BLK-05M | 0.5 [1.64] |
| CAU3HFACV-BLK-1M | 1.0 [3.28] |
| CAU3HFACV-BLK-105M | 1.5 [4.92] |
| CAU3HFACV-BLK-2M | 2.0 [6.56] |
| CAU3HFACV-BLK-205M | 2.5 [8.20] |
| CAU3HFACV-BLK-3M | 3.0 [9.84] |



- NOTES:**
- CABLE TYPE-U DRAG CHAIN TESTING: 5 MILLION CYCLES MIN. (75mm BEND RADIUS)
 - CABLE ASSEMBLY SHALL HAVE 360° SHIELD TERMINATION.
 - CABLE ASSEMBLY SHALL BE TESTED FOR CONTINUITY.
 - L-COM LOGO AND USB ICON MAY BE ON ANY SIDE OF THE OVERMOLD FOR USB TYPE C END.
 - CABLE ASSEMBLY SHALL BE INDIVIDUALLY PACKAGED IN ACCORDANCE WITH L-COM SPECIFICATION PS-0031.

THE INFORMATION CONTAINED IN THIS DRAWING IS THE SOLE PROPERTY OF INFINITE ELECTRONICS, INC. ANY REPRODUCTION IN PART OR WHOLE WITHOUT THE WRITTEN PERMISSION OF INFINITE ELECTRONICS, INC. IS PROHIBITED. THESE COMMODITIES, TECHNOLOGY OR SOFTWARE WERE EXPORTED FROM THE UNITED STATES IN ACCORDANCE WITH THE EXPORT ADMINISTRATION REGULATIONS. DIVERSION CONTRARY TO U.S. LAW PROHIBITED.

UNLESS OTHERWISE SPECIFIED LEADING DIMENSIONS ARE INCHES DIMENSIONS IN [] ARE MILLIMETERS

TOLERANCES:

| | |
|---------------------|------------------|
| X = ±.2 [5] | FRACTIONS ± 1/32 |
| .XX = ±.02 [0.5] | ANGLES ± 1° |
| .XXX = ±.005 [0.13] | |

CABLE LENGTH TOLERANCES:

| | |
|--------------------------|-----------------|
| ≤12 [305] | = +1 [25] / -0 |
| >12 [305] ≤ 60 [1524] | = +2 [51] / -0 |
| >60 [1524] ≤ 120 [3048] | = +4 [102] / -0 |
| >120 [3048] ≤ 300 [7620] | = +6 [152] / -0 |
| >300 [7620] | = +5% / -0 |

ALL DIMENSIONS ARE FOR REFERENCE ONLY AND SUBJECT TO CHANGE WITHOUT NOTICE. UN-DIMENSIONED/NON-CRITICAL FEATURES MAY VARY IN SIZE AND LOCATION. COLORS MAY VARY.

L-com
an INFINIT® brand

Website: www.L-com.com
Phone: 1.800.341.5266 | 1.978.682.6936

INTERPRET ALL DIMENSIONS AND TOLERANCES PER ASME Y14.5

| | |
|-------|--------|
| SCALE | SHEET |
| NONE | 1 OF 1 |

DESCRIPTION: CA USB 3.0 A/C W/ HDW HIGH FLEX DRAG CHAIN

| | | | | |
|------|-----------|----------|---------------|-----|
| SIZE | CAGE CODE | DRAWN BY | ITEM NO. | REV |
| A | 43321 | DMAY | CAU3HFACV-BLK | A |