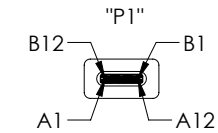
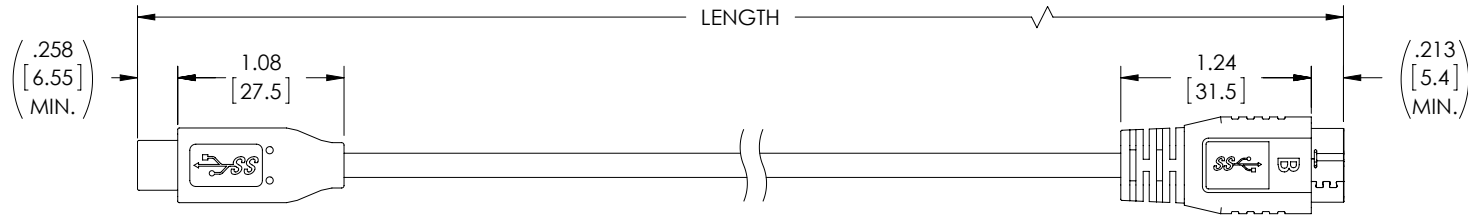
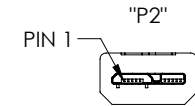


THE INFORMATION CONTAINED IN THIS DRAWING IS THE SOLE PROPERTY OF L-COM, INC. ANY REPRODUCTION IN PART OR WHOLE WITHOUT THE WRITTEN PERMISSION OF L-COM, INC. IS PROHIBITED.

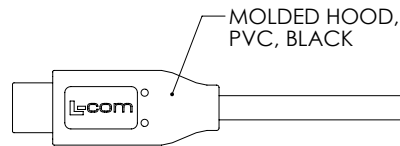
REVISIONS			
REV	DESCRIPTION	DATE	APPROVED
A	INITIAL RELEASE	1/25/16	D.GRIFFIN
B	ECN 8306: UPDATE TO USB TYPE C VERSION 1.2, ADD CONNECTION LINE TO THE WIRE MAP	4/20/16	S.LI
C	ECN 8937: CHG PRODUCT DESCRIPTION FROM USB 3.1 TO USB 3.0	9/20/2017	R.CLARK



USB 3.0 PLUG SERIES "C" 30μ INCHES GOLD PLATING



USB 3.0 PLUG SERIES MICRO "B" 30μ INCHES GOLD PLATING

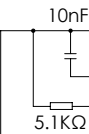


MOLDED HOOD, PVC, BLACK

MOLDED HOOD, PVC, BLACK

UL STYLE 2725,  
 (1) 32AWG STRANDED TINNED COPPER TWISTED PAIR  
 (2) 32AWG SHIELDED STRANDED TINNED COPPER TWISTED PAIR WITH DRAIN WIRE  
 (2) 26AWG STRANDED TINNED COPPER CONDUCTORS OVERALL ALUMINUM/POLYESTER SHIELD PLUS TINNED COPPER BRAID SHIELD  
 JACKET: PVC, BLACK (NOM DIA. .165" [4.2])

WIRE MAP					
"P1"	SIGNAL NAME	CONDUCTOR	"P2"	SIGNAL NAME	COLOR
A1,B1,A12,B12	GND	INDV.	5	GND	BLACK
A4,B4,A9,B9	V <sub>BUS</sub>	SHIELDED PAIR DRAIN 1, DRAIN 2	8	GND_DRAIN	N/A
A5	CC	INDV.	1	V <sub>BUS</sub>	RED
B5	V <sub>CONN</sub>				N/C
A6	Dp1	UNSHIELDED PAIR	3	D+	GREEN
A7	Dn1		2	D-	WHITE
A2	SSTXp1	SHIELDED PAIR 1	10	MicB_SSRX+	YELLOW
A3	SSTXn1		9	MicB_SSRX-	BLUE
B11	SSRXp1	SHIELDED PAIR 2	7	MicB_SSTX+	ORANGE
B10	SSRXn1		6	MicB_SSTX-	PURPLE
			4	ID	N/A
SHELL	SHIELD	BRAID	SHELL	SHIELD	N/A



**NOTES:**

- CABLE ASSEMBLY SHALL HAVE 360° SHIELD TERMINATION.
- CABLE ASSEMBLY SHALL BE TESTED FOR CONTINUITY.
- L-COM LOGO AND USB ICON MAY BE ON ANY SIDE OF THE OVMOLD FOR USB SERIES "C" END.
- CABLE ASSEMBLY SHALL BE INDIVIDUALLY PACKAGED IN ACCORDANCE WITH L-COM SPECIFICATION PS-0031.

**REGULATORY COMPLIANCE:**

CE2011/65/EU(RoHS DIRECTIVE)

PART NUMBER	LENGTH METERS [FEET]
CAU31CMICB-03M	0.3 [.98]
CAU31CMICB-05M	0.5 [1.64]
CAU31CMICB-1M	1.0 [3.28]
CAU31CMICB-2M	2.0 [6.56]
CAU31CMICB-3M	3.0 [9.84]
CAU31CMICB-5M	5.0 [16.40]

UNLESS OTHERWISE SPECIFIED, DIMENSIONS ARE IN INCHES [mm] OVERALL CABLE LENGTH TOLERANCE: $\leq 12$ [305] = +1 [25] / -0 $>12$ [305] $\leq 60$ [1524] = +2 [51] / -0 $>60$ [1524] $\leq 120$ [3048] = +4 [102] / -0 $>120$ [3048] $\leq 300$ [7620] = +6 [152] / -0 $>300$ [7620] = +5% / -0% ALL OTHER DIMENSIONAL TOLERANCES: .X = ± .2 [5.08] .XX = ± .02 [1.51] .XXX = ± .005 [1.13]	APPROVALS DRAWN BY D. CASTRO CHECKED BY S. LI APPROVED BY S. LI	DATE 4/23/15 1/15/16 1/15/16	50 HIGH STREET NORTH ANDOVER, MA 01845				
	CONFIGURATION DETAILS OF UNDIMENSIONED FEATURES MAY VARY	CATEGORY USB		PRODUCT DESCRIPTION CBL USB 3.0 TYPE C/MICB			
	PROJECTION 	COLOR VARIATIONS MAY OCCUR		SIZE <b>A</b>	FSCM NO. <b>43321</b>	DWG. NO. CAU31CMICB	REV. <b>C</b>
	SCALE: NONE			CAD FILE: CAU31CMICB.SLDDRW	SHEET 1 OF 1		