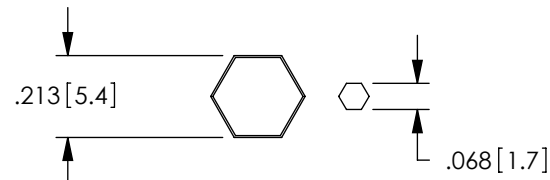
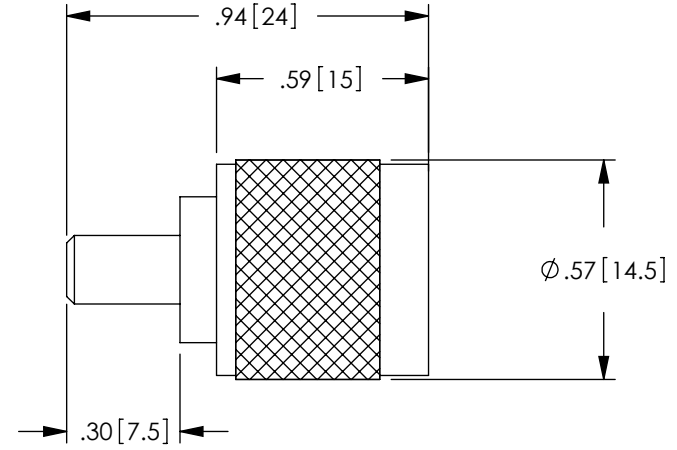
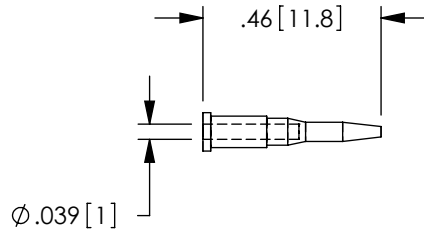
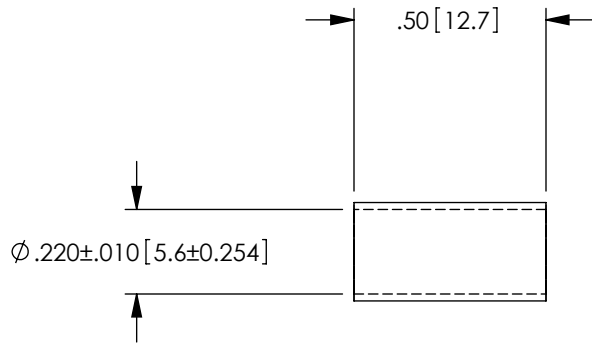
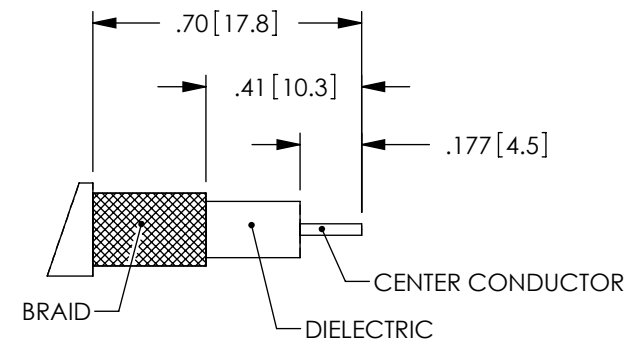


THE INFORMATION CONTAINED IN THIS DRAWING IS THE SOLE PROPERTY OF L-COM, INC. ANY REPRODUCTION IN PART OR WHOLE WITHOUT THE WRITTEN PERMISSION OF L-COM, INC. IS PROHIBITED.

REVISIONS			
REV	DESCRIPTION	DATE	APPROVED
E	ECN 3167: UPDATE DWG FORMAT	1/22/08	D.GRIFFIN
F	ECN 3776: UPDATED DIMENSIONS AND NEW FORMAT	12/31/08	D.FRISIELLO



RECOMMENDED
FERRULE & PIN
CRIMP SIZES



RECOMMENDED
CABLE STRIPPING
DIMENSIONS

NOTES:

MATERIAL:

BODY: BRASS
SHELL: BRASS
FERRULE: BRASS
CENTER PIN: BRASS
INSULATOR: ACETAL
RETAINING RING: BRASS
GASKET: RUBBER

FINISH:

BODY: NICKEL PLATE
SHELL: NICKEL PLATE
FERRULE: NICKEL PLATE
PIN: GOLD PLATE
RETAINING RING: NICKEL PLATE

MISCELLANEOUS:

IMPEDANCE: 50 OHMS.
INDIVIDUALLY PACKAGE EACH ASSEMBLY UTILIZING APPROPRIATE SIZED BAG.
RG58 COAX CABLE ASSEMBLIES.

UNLESS OTHERWISE SPECIFIED, DIMENSIONS ARE IN INCHES [mm] OVERALL CABLE LENGTH TOLERANCE: ≤12 [305] = +1 [25] / -0 >12 [305] ≤60 [1524] = +2 [51] / -0 >60 [1524] ≤120 [3048] = +4 [102] / -0 >120 [3048] ≤300 [7620] = +6 [152] / -0 >300 [7620] = +5% / -0% ALL OTHER DIMENSIONAL TOLERANCES: .X = .3 .XX = .15	APPROVALS DRAWN BY C.MCCORMICK	DATE 11/13/2001		45 BEECHWOOD DRIVE NORTH ANDOVER, MA 01845	
	CHECKED BY D.PARHAM	11/13/2001		CATEGORY COAXIAL	
	APPROVED BY R.CARRICK	11/13/2001	PRODUCT DESCRIPTION CONN TNC M RG58 CRIMP		
	CONFIGURATION DETAILS OF UNDIMENSIONED FEATURES MAY VARY	COLOR VARIATIONS MAY OCCUR	SIZE A	FSCM NO. 43321	DWG. NO. BAC893-58
PROJECTION 	SCALE: NONE		CAD FILE: BAC893-58.SLDDRW	REV. F	
			SHEET 1 OF 1		