

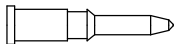
THE INFORMATION CONTAINED IN THIS DRAWING IS THE SOLE PROPERTY OF L-COM, INC. ANY REPRODUCTION IN PART OR WHOLE WITHOUT THE WRITTEN PERMISSION OF L-COM, INC. IS PROHIBITED.

REVISIONS			
REV	DESCRIPTION	DATE	APPROVED
E	ECN 3165: UPDATE DWG FORMAT	1/21/08	D.GRIFFIN
E	ECN 99999: OHMS WAS OHMT	4/12/10	D. CASTRO
F	ECN 7510: UPDATED FORMAT, PKG, ROHS	7/14/14	D. DESJARDIN

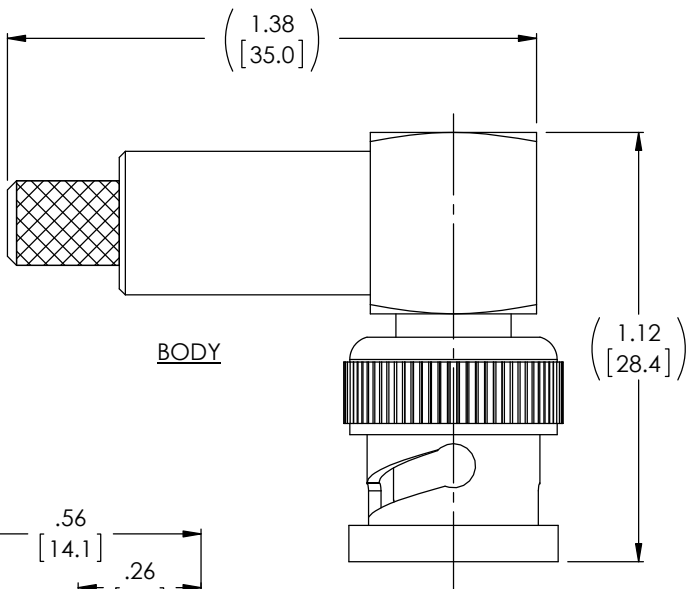
DESCRIPTION	MATERIAL	FINISH
BODY	BRASS	NICKEL
FERRULE	BRASS	NICKEL
CENTER PIN	BRASS	GOLD
INSULATOR	ACETAL	WHITE



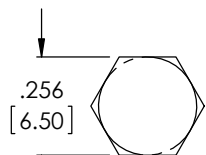
FERRULE



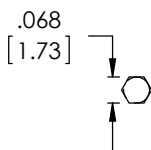
CENTER PIN



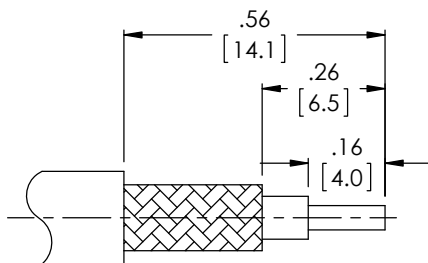
BODY



RECOMMENDED FERRULE CRIMP SIZE



RECOMMENDED PIN CRIMP SIZE



RECOMMENDED CABLE STRIPPING

**NOTES:**

**ELECTRICAL:**  
IMPEDANCE: 75 OHMS.

**PACKAGING:**  
COMPONENT SHALL BE INDIVIDUALLY PACKAGED IN ACCORDANCE WITH L-COM SPECIFICATION PS-0031.

**APPLICATION:**  
RG59 & RG62 CABLE ASSEMBLIES

**REGULATORY COMPLIANCE:**  
CE2011/65/EU (RoHS DIRECTIVE)

UNLESS OTHERWISE SPECIFIED, DIMENSIONS ARE IN INCHES [mm] OVERALL CABLE LENGTH TOLERANCE: ≤12 [305] = +1 [25] / -0 >12 [305] ≤60 [1524] = +2 [51] / -0 >60 [1524] ≤120 [3048] = +4 [102] / -0 >120 [3048] ≤300 [7620] = +6 [152] / -0 >300 [7620] = +5% / -0% ALL OTHER DIMENSIONAL TOLERANCES: .X = ± .2 [5.08] .XX = ± .02 [51] .XXX = ±.005 [1.27]	APPROVALS C.MCCORMICK D.PARHAM R.CARRICK	DATE 11/06/2001 11/06/2001 11/06/2001
	CONFIGURATION DETAILS OF UNDIMENSIONED FEATURES MAY VARY	
	COLOR VARIATIONS MAY OCCUR	
	PROJECTION 	

<b>L-com</b> Global Connectivity 45 BEECHWOOD DRIVE NORTH ANDOVER, MA 01845	
CATEGORY <b>AUDIO/VIDEO</b>	
PRODUCT DESCRIPTION <b>CONN BNC M RA RG59/62 CRIMP</b>	
SIZE <b>A</b>	FSCM NO. <b>43321</b>
DWG. NO. <b>BAC706</b>	REV. <b>F</b>
SCALE: NONE   CAD FILE: BAC706.SLDDRW   SHEET 1 OF 1	