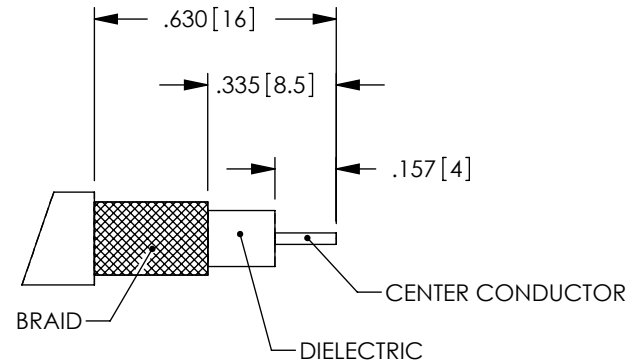
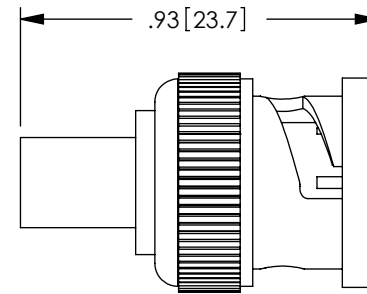
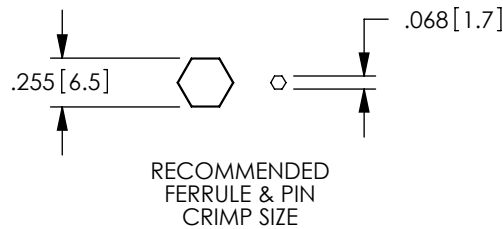
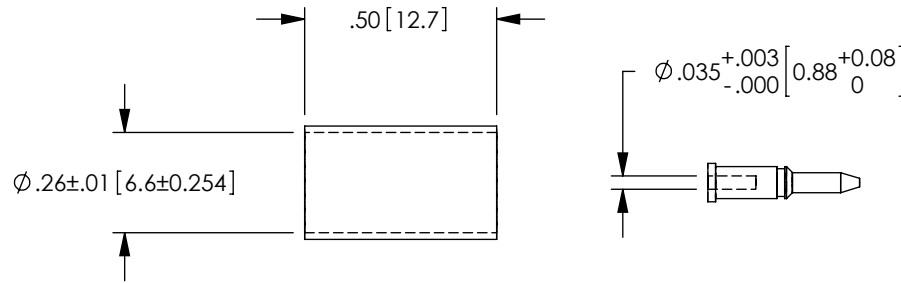


THE INFORMATION CONTAINED IN THIS DRAWING IS THE SOLE PROPERTY OF L-COM, INC. ANY REPRODUCTION IN PART OR WHOLE WITHOUT THE WRITTEN PERMISSION OF L-COM, INC. IS PROHIBITED.

REVISIONS			
REV	DESCRIPTION	DATE	APPROVED
F	ECN 3139: UPDATE DWG FORMAT	1/3/08	D.GRIFFIN
G	ECN 3430: REVISED PIN DIM FROM .031 [.8] TO .033 [.85]	7/3/08	D.FRISIELLO
H	ECN3988: .035 CENTER PIN HOLE WAS .033.	05/04/09	DFP
J	ECN 3999: CHANGED LENGTH OF FERRULE TO .50 [12.7]	5/11/09	D.FRISIELLO



CABLE STRIPPING
DIMENSIONS

NOTES:

ELECTRICAL:
EACH CABLE ASSEMBLY SHALL BE SUBJECTED TO AND PASS A CONTINUITY TEST.

PACKAGING:
INDIVIDUALLY PACKAGE EACH ASSEMBLY UTILIZING APPROPRIATE SIZED BAG

COMPONENT SPECIFICATION:
MATERIALS:
BODY: BRASS
FERRULE: BRASS OR COPPER ALLOY
PIN: BRASS
INSULATOR: ACETAL

FINISH:
BODY: NICKEL PLATE
FERRULE: NICKEL PLATE
PIN: GOLD PLATE

ELECTRICAL:
IMPEDANCE: 75 OHM

APPLICATION:
RG59B/U PLENUM COAXIAL CABLE.

RoHS Compliant ✓

UNLESS OTHERWISE SPECIFIED, DIMENSIONS ARE IN INCHES [mm] DIMENSIONAL TOLERANCES: .X = ±.1 .XX = ±.01 .XXX = ±.005 ANGULAR TOLERANCES: ALL = ± 1° PROJECTION 	APPROVALS	DATE		45 BEECHWOOD DRIVE NORTH ANDOVER, MA 01845	
	DRAWN BY C.MCCORMICK	11/02/2001			
	CHECKED BY D.PARHAM	11/02/2001	CATEGORY	COAXIAL	
	APPROVED BY R.CARRICK	11/02/2001	PRODUCT DESCRIPTION	CONN 75OHM BNCM RG59 CRMP TFE	
	CONFIGURATION DETAILS OF UNDIMENSIONED FEATURES MAY VARY	SIZE A	FSCM NO. 43321	DWG. NO. BAC028	REV. J
	COLOR VARIATIONS MAY OCCUR	SCALE: NONE	CAD FILE: BAC028.SLDDRW	SHEET 1 OF 1	