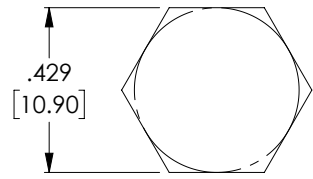
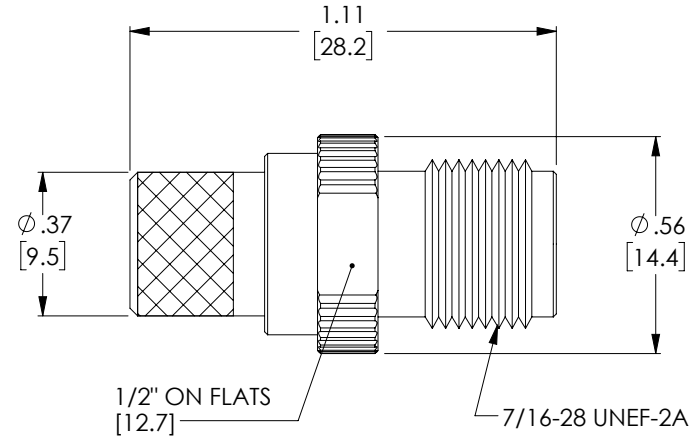
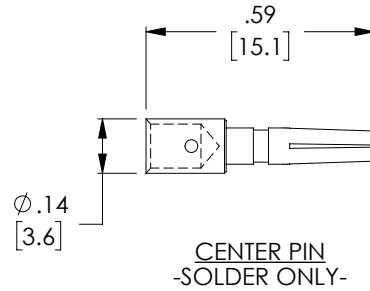
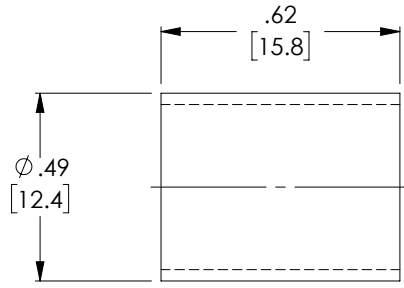


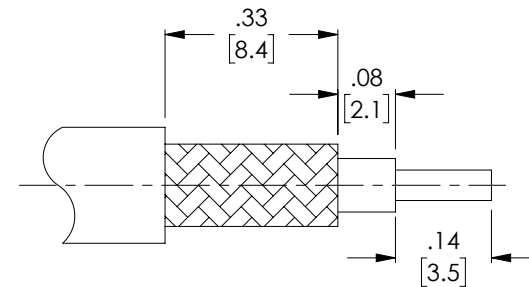
THE INFORMATION CONTAINED IN THIS DRAWING IS THE SOLE PROPERTY OF L-COM, INC. ANY REPRODUCTION IN PART OR WHOLE WITHOUT THE WRITTEN PERMISSION OF L-COM, INC. IS PROHIBITED.

| REVISIONS | | | |
|-----------|--------------------------------------|------------|------------|
| REV | DESCRIPTION | DATE | APPROVED |
| A | INITIAL RELEASE | 08/07/2012 | D.GRIFFIN |
| B | ECN 9647: REVISED PER NEW SPEC SHEET | 01/23/2019 | DFRISIELLO |
| | | | |

| DESCRIPTION | MATERIAL | FINISH |
|------------------|----------|---------|
| BODY | BRASS | NICKEL |
| DIELECTRIC | PTFE | NATURAL |
| CENTER PIN | BRASS | GOLD |
| PRESS FIT WASHER | BRASS | NICKEL |
| FERRULE | BRASS | NICKEL |



RECOMMENDED
FERRULE CRIMP SIZE



RECOMMENDED
CABLE STRIPPING

NOTES:

ELECTRICAL:

IMPEDANCE: 50 OHMS
 WITHSTAND VOLTAGE: 1500V
 FREQUENCY RANGE: 0~6 GHz
 VSWR: <1.20 @ 0~6 GHz
 DURABILITY: ≥ 500 CYCLE
 CABLE RETENTION: > 40 POUNDS

MISCELLANEOUS:

COMPONENTS SHALL BE INDIVIDUALLY PACKAGED IN ACCORDANCE WITH L-COM SPECIFICATION PS-0031.

ALL DIMENSIONS ARE FOR REFERENCE ONLY.

| | | | | |
|---|--|---------------------------|--------------------------|--|
| UNLESS OTHERWISE SPECIFIED, DIMENSIONS ARE IN INCHES [mm] OVERALL CABLE LENGTH TOLERANCE: ≤12 [305] = +1 [25] / -0 >12 [305] ≤60 [1524] = +2 [51] / -0 >60 [1524] ≤120 [3048] = +4 [102] / -0 >120 [3048] ≤300 [7620] = +6 [152] / -0 >300 [7620] = +5% / -0% | APPROVALS | DATE | | 50 HIGH STREET NORTH ANDOVER, MA 01845 |
| | DRAWN BY D.DESJARDIN | 08/06/2012 | | |
| ALL OTHER DIMENSIONAL TOLERANCES: .X = ± .2 [5.08] .XX = ± .02 [5.1] .XXX = ± .005 [1.3] | CHECKED BY D.PARHAM | 08/06/2012 | CATEGORY | COAXIAL |
| | APPROVED BY P.PESA | 08/06/2012 | | |
| PROJECTION | CONFIGURATION DETAILS OF UNDIMENSIONED FEATURES MAY VARY | SCALE: NONE | PRODUCT DESCRIPTION | CON,TNC FEMALE CRIMP LMR400 |
| | COLOR VARIATIONS MAY OCCUR | SIZE A | FSCM NO. 43321 | DWG. NO. ATF-1402 |
| | | CAD FILE: ATF-1402.SLDDRW | | REV. B |
| | | | | SHEET 1 OF 1 |