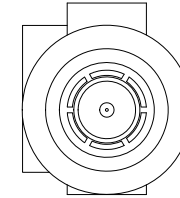
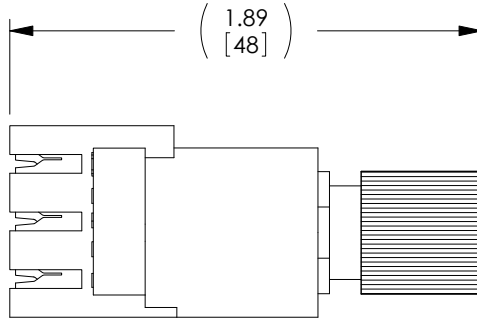
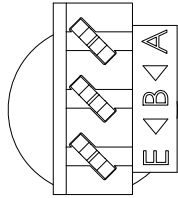
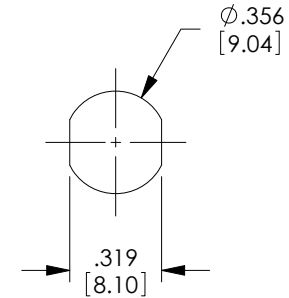
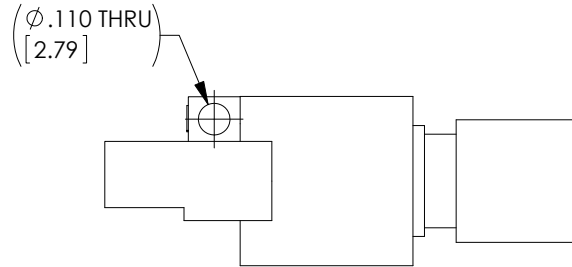


THE INFORMATION CONTAINED IN THIS DRAWING IS THE SOLE PROPERTY OF L-COM, INC. ANY REPRODUCTION IN PART OR WHOLE WITHOUT THE WRITTEN PERMISSION OF L-COM, INC. IS PROHIBITED.

REVISIONS			
REV	DESCRIPTION	DATE	APPROVED
A	DRAWING REPLACES ACK2010-OD1	7/2/14	D.FRISIELLO



1.6/5.6 MALE



RECOMMENDED PANEL OPENING

SPECIFICATIONS;

MATERIALS:
 BODY: BRASS
 INNER CONTACT: PHOSPHORUS BRONZE
 INSULATOR: PTFE
 OUTER SLEEVE & BASE MOLDING: NORYL, BLACK
 IDC MOLDING: POLYESTER, WHITE

FINISH:
 BODY: NICKEL PLATE
 CONTACT: GOLD PLATE
 IDC CONTACTS: SILVER PLATE

ELECTRICAL:
 CHARACTERISTIC IMPEDANCE: 75 OHM UNBALANCED
 COAXIAL TO 120 OHM BALANCED TWISTED PAIR

ENVIRONMENTAL:
 OPERATING TEMPERATURE RANGE: -30°C TO 75°C

APPLICATION NOTES:
 0.015" TO 0.026" CONDUCTOR DIAMETER, INSULATION
 DIAMETER 0.028" TO 0.56"

PACKAGING:
 COMPONENT SHALL BE INDIVIDUALLY PACKAGED IN
 ACCORDANCE WITH L-COM SPECIFICATION PS-0031.

REGULATORY COMPLIANCE:
 CE2011/65/EU(RoHS DIRECTIVE)

UNLESS OTHERWISE SPECIFIED, DIMENSIONS ARE IN INCHES [mm] OVERALL CABLE LENGTH TOLERANCE: ≤12 [305] = +1 [25] / -0 >12 [305] ≤60 [1524] = +2 [51] / -0 >60 [1524] ≤120 [3048] = +4 [102] / -0 >120 [3048] ≤300 [7620] = +6 [152] / -0 >300 [7620] = +5% / -0% ALL OTHER DIMENSIONAL TOLERANCES: .X = ± .2 [5.08] .XX = ± .02 [51] .XXX = ±.005 [1.13]	APPROVALS DRAWN BY C.MCCORMICK CHECKED BY D.PARHAM APPROVED BY R.CARRICK	DATE 04/04/2003 04/04/2003 04/04/2003	45 BEECHWOOD DRIVE NORTH ANDOVER, MA 01845			
	CONFIGURATION DETAILS OF UNDIMENSIONED FEATURES MAY VARY			CATEGORY COAXIAL		
	PROJECTION 	COLOR VARIATIONS MAY OCCUR	SIZE A	FSCM NO. 43321	DWG. NO. ACK2010	REV. A
	SCALE: NONE		CAD FILE: ACK2010.SLDDRW		SHEET 1 OF 1	