

6

5

4

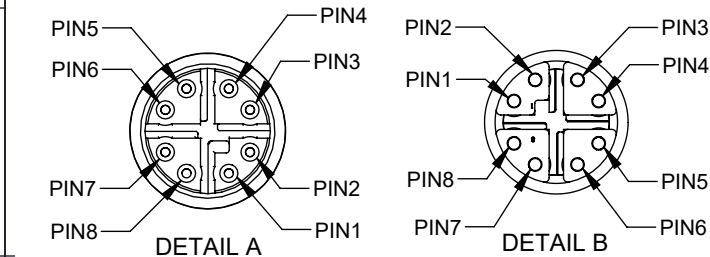
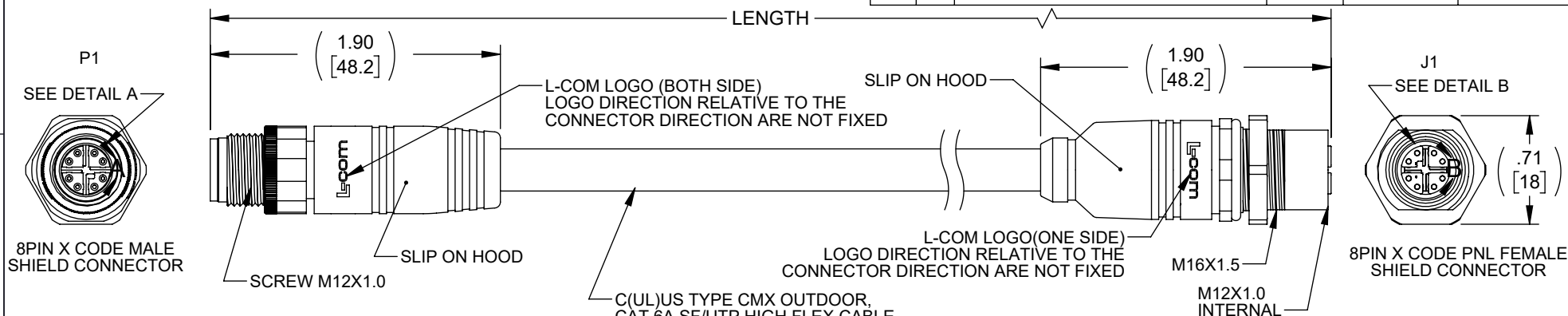
3

2

1

## REVISION

ZONE	REV	DESCRIPTION	DATE	CHANGED BY	APPROVED
	D	ECO-15404	01/16/2026	HBAKKE	DGUST



CONNECTOR PIN ASSIGNMENT

## NOTES

**MATERIAL:**  
SLIP ON HOOD: THERMOPLASTIC POLYURETHANE, BLACK  
INSULATOR: NYLON, BLACK  
SHELL/SCREW NUT: BRASS, NICKEL PLATE  
CONTACTS: PHOSPHOR BRONZE, 15" MIN. GOLD PLATE  
O-RING: VITON

**ELECTRICAL:**  
NOMINAL VOLTAGE RATING: 48V AC/DC  
MAX CURRENT: 0.5A

**APPLICATION:**  
INGRESS PROTECTION RATING IS IP67(MATED)

**ENVIRONMENTAL:**  
OPERATING TEMPERATURE RANGE: -40°C TO +75°C  
CABLE JACKET RESISTANCE: OIL, SUNLIGHT, AND WELD SPLATTER RESISTANT  
CABLE FLEX LIFE: 1 MILLION CYCLE TEST (10X CABLE OD)  
10 MILLION CYCLE TEST (20X CABLE OD)

**MISCELLANEOUS**  
CABLE ASSEMBLIES TO BE TESTED FOR CONTINUITY  
WIRED TO IEC 61076-2-109 STANDARDS  
CABLE ASSEMBLY SHALL BE INDIVIDUALLY PACKAGED IN  
ACCORDANCE WITH L-COM SPECIFICATION PS-0031.

**REGULATORY COMPLIANCE:**  
EU ROHS DIRECTIVE (MOST RECENT RELEASED VERSION)

THE INFORMATION CONTAINED IN THIS DRAWING IS THE SOLE PROPERTY OF INFINITE ELECTRONICS, INC. ANY REPRODUCTION IN PART OR WHOLE WITHOUT THE WRITTEN PERMISSION OF INFINITE ELECTRONICS, INC. IS PROHIBITED. THESE COMMODITIES, TECHNOLOGY OR SOFTWARE WERE EXPORTED FROM THE UNITED STATES IN ACCORDANCE WITH THE EXPORT ADMINISTRATION REGULATIONS. DIVERSION CONTRARY TO U.S. LAW PROHIBITED.

6

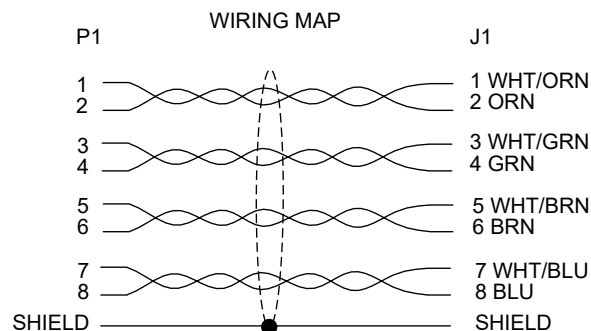
5

4

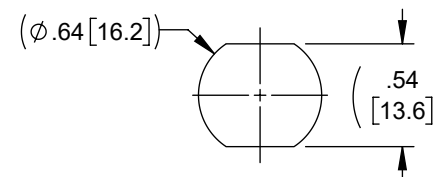
3

2

1



PART NUMBER	LENGTH	
	FEET	METERS
TRG626-T6T-05M	1.64	0.5
TRG626-T6T-1M	3.28	1.0
TRG626-T6T-2M	6.56	2.0
TRG626-T6T-3M	9.84	3.0
TRG626-T6T-5M	16.41	5.0
TRG626-T6T-10M	32.82	10.0
TRG626-T6T-15M	49.22	15.0



RECOMMENDED MOUNT HOLE

UNLESS OTHERWISE SPECIFIED  
LEADING DIMENSIONS ARE INCHES  
DIMENSIONS IN [ ] ARE MILLIMETERS

**TOLERANCES:**

X = ±.2 [5]	FRACTIONS ± 1/32
.XX = ±.02 [0.5]	ANGLES ± 1°
.XXX = ±.005 [0.13]	

**CABLE LENGTH TOLERANCES:**

≤12 [305]	= +1 [25] / -0
>12 [305] ≤ 60 [1524]	= +2 [51] / -0
>60 [1524] ≤ 120 [3048]	= +4 [102] / -0
>120 [3048] ≤ 300 [7620]	= +6 [152] / -0
>300 [7620]	= +5% / -0

ALL DIMENSIONS ARE FOR REFERENCE ONLY  
AND SUBJECT TO CHANGE WITHOUT NOTICE.  
UN-DIMENSIONED/NON-CRITICAL FEATURES  
MAY VARY IN SIZE AND LOCATION  
COLORS MAY VARY

**L-com®**  
an INFINIT® brand

Website: [www.L-com.com](http://www.L-com.com)  
Phone: 1.800.341.5266 | 1.978.682.6936

## DESCRIPTION

CATEGORY 6A M12 8 POSITION X CODE SF/UTP INDUSTRIAL  
CABLE, M12 M / M12 F PANEL MOUNT

SIZE	CAGE CODE	DRAWN BY	ITEM NO.	REV
A	43321	DCUI	TRG626-T6T	D