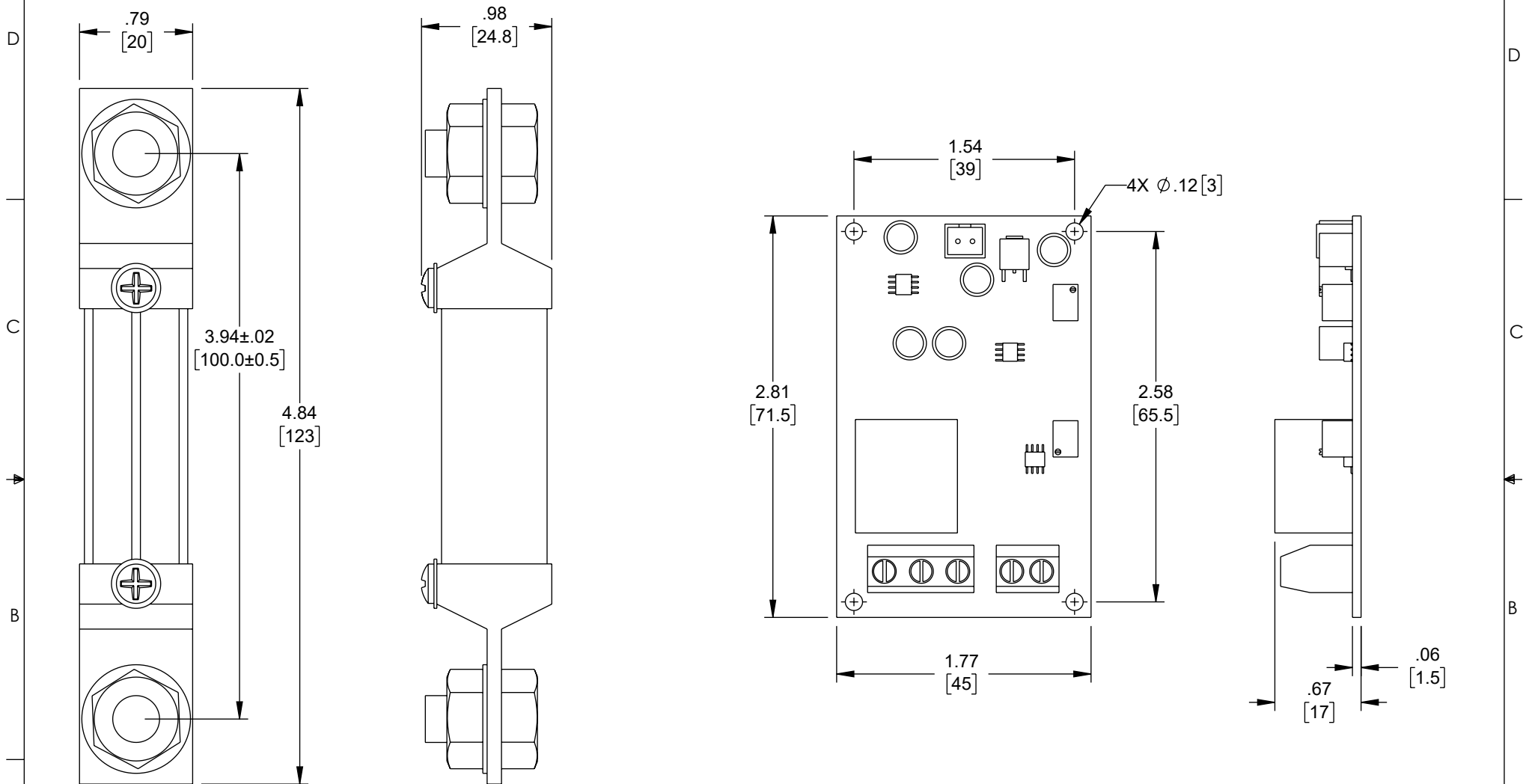


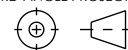
THE INFORMATION CONTAINED IN THIS DRAWING IS THE SOLE  
PROPERTY OF L-COM, INC. ANY REPRODUCTION IN PART OR WHOLE  
WITHOUT THE WRITTEN PERMISSION OF L-COM, INC. IS PROHIBITED.

REVISION					
ZONE	REV	DESCRIPTION	DATE	CHANGED BY	APPROVED
	B	ECO-13049	9/13/2023	DMAY	THOUGHTON



NOTES:

- COMPONENT SHALL BE INDIVIDUALLY PACKAGED IN ACCORDANCE WITH L-COM SPECIFICATION PS-0031.
- NOT ALL COMPONENTS SHOWN FOR CLARITY.

UNLESS OTHERWISE SPECIFIED, DIMENSIONS ARE IN INCHES [mm]  OVERALL CABLE LENGTH TOLERANCE: ≤12 [305] = +1 [25] / -0 >12 [305] ≤60 [1524] = +2 [51] / -0 >60 [1524] ≤120 [3048] = +4 [102] / -0 >120 [3048] ≤300 [7620] = +6 [152] / -0 >300 [7620] = +5% / -0  ALL OTHER DIMENSIONAL TOLERANCES: .X = ±.2 [5]      FRACTIONS .XX = ±.02 [.5]      ± 1/32 .XXX = ±.005 [.13]      ANGLES ± 1°	APPROVALS	DATE	<div>L-com™</div> <div>an INFINITI® brand</div>		50 High Street, West Mill, North Andover, MA 01845 USA. Phone: 1.800.341.5266 1.978.682.6936	
	DRAWN BY DMAY	4/7/2022				
	CHECKED BY HBAKKE	04/07/2022				
	APPROVED BY THOUGHTON	05/06/2022				
THIRD-ANGLE PROJECTION <div></div>	CONFIGURATION DETAILS OF UNDIMENSIONED FEATURES MAY VARY		PRODUCT DESCRIPTION DC CURRENT SHUNT CURRENT SENSOR, 0-300A, DC 24V			
	COLOR VARIATIONS MAY OCCUR		SIZE A	CAGE CODE 43321	ITEM NO. SRCN-C425-3	REV. B
			SCALE: NONE		CAD FILE: SRCN-C425-3.SLDDRW	
					SHEET 1 OF 1	