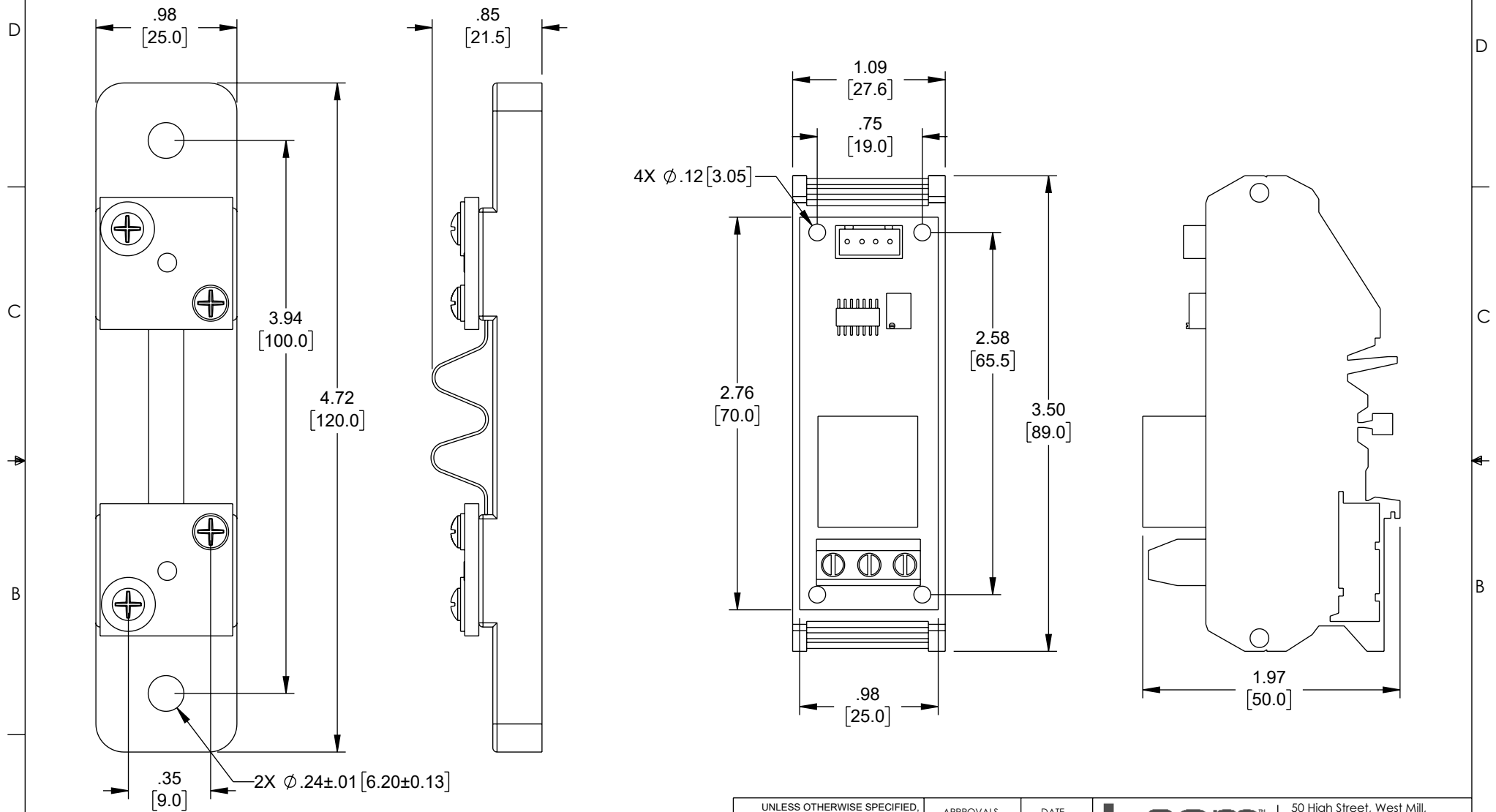


THE INFORMATION CONTAINED IN THIS DRAWING IS THE SOLE  
PROPERTY OF L-COM, INC. ANY REPRODUCTION IN PART OR WHOLE  
WITHOUT THE WRITTEN PERMISSION OF L-COM, INC. IS PROHIBITED.

REVISION					
ZONE	REV	DESCRIPTION	DATE	CHANGED BY	APPROVED
	B	ECO-13049	9/13/2023	DMAY	THOUGHTON



NOTES:

1. COMPONENT SHALL BE INDIVIDUALLY PACKAGED IN ACCORDANCE WITH L-COM SPECIFICATION PS-0031.
2. NOT ALL COMPONENTS SHOWN FOR CLARITY.

UNLESS OTHERWISE SPECIFIED, DIMENSIONS ARE IN INCHES [mm]	APPROVALS		DATE	
	DRAWN BY DMAY		4/7/2022	
OVERALL CABLE LENGTH TOLERANCE: ≤12 [305] = +1 [25] / -0 >12 [305] ≤60 [1524] = +2 [51] / -0 >60 [1524] ≤120 [3048] = +4 [102] / -0 >120 [3048] ≤300 [7620] = +6 [152] / -0 >300 [7620] = +5% / -0	CHECKED BY HBAKKE		04/07/2022	
	APPROVED BY THOUGHTON		05/06/2022	
	ALL OTHER DIMENSIONAL TOLERANCES: .X = ± .2 [5]   FRACTIONS .XX = ± .02 [.5]   ± 1/32 .XXX = ± .005 [.13]   ANGLES ± 1°		CONFIGURATION DETAILS OF UNDIMENSIONED FEATURES MAY VARY	
THIRD-ANGLE PROJECTION 	COLOR VARIATIONS MAY OCCUR		PRODUCT DESCRIPTION ISOLATED DC CURRENT SHUNT CURRENT SENSOR, 0-20A, DC 24V	
SIZE A	CAGE CODE 43321		ITEM NO. SRCN-C410-3	
SCALE: NONE	CAD FILE: SRCN-C410-3.SLDDRW		REV. B	