

6

5

4

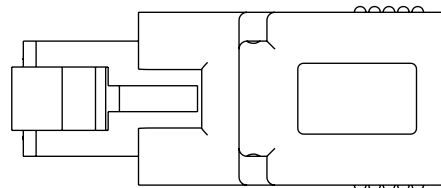
3

2

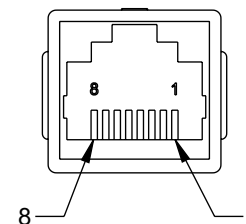
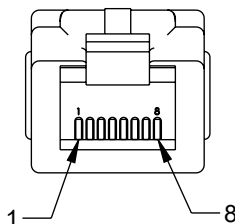
1

## REVISION

| ZONE | REV | DESCRIPTION | DATE       | CHANGED BY | APPROVED |
|------|-----|-------------|------------|------------|----------|
|      | A1  | ECO-14004   | 11/15/2024 | KGLEBOVA   | DGUST    |

RJ45  
PLUGRJ48C  
JACK

DARK BLUE



## WIRING SPEC

RJ48C  
JACK

|   |  |
|---|--|
| 1 |  |
| 2 |  |
| 3 |  |
| 4 |  |
| 5 |  |
| 6 |  |
| 7 |  |
| 8 |  |

RJ45  
PLUG

|   |  |
|---|--|
| 1 |  |
| 2 |  |
| 3 |  |
| 4 |  |
| 5 |  |
| 6 |  |
| 7 |  |
| 8 |  |

| FROM<br>RJ48C JACK | TO<br>RJ48C JACK |
|--------------------|------------------|
| 1                  | 3                |
| 2                  | 6                |

| FROM<br>RJ45 PLUG | TO<br>RJ45 PLUG |
|-------------------|-----------------|
| 1                 | 3               |
| 2                 | 6               |

## NOTES:

- TEST: 100% ELECTRICAL TEST AT 1M OHM INSULATION RESISTANCE.
- CHAIN INCLUDED.

THE INFORMATION CONTAINED IN THIS DRAWING IS THE SOLE PROPERTY OF INFINITE ELECTRONICS, INC. ANY REPRODUCTION IN PART OR WHOLE WITHOUT THE WRITTEN PERMISSION OF INFINITE ELECTRONICS, INC. IS PROHIBITED. THESE COMMODITIES, TECHNOLOGY OR SOFTWARE WERE EXPORTED FROM THE UNITED STATES IN ACCORDANCE WITH THE EXPORT ADMINISTRATION REGULATIONS. DIVERSION CONTRARY TO U.S. LAW PROHIBITED.

UNLESS OTHERWISE SPECIFIED  
LEADING DIMENSIONS ARE INCHES  
DIMENSIONS IN [ ] ARE MILLIMETERS

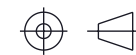
TOLERANCES:  
X = ±.2 [5]  
.XX = ±.02 [0.5]  
.XXX = ±.005 [0.13]  
FRACTIONS  
± 1/32  
ANGLES ± 1°

CABLE LENGTH TOLERANCES:  
≤12 [305] = +1 [25] / -0  
>12 [305] ≤ 60 [1524] = +2 [51] / -0  
>60 [1524] ≤ 120 [3048] = +4 [102] / -0  
>120 [3048] ≤ 300 [7620] = +6 [152] / -0  
>300 [7620] = +5% / -0

ALL DIMENSIONS ARE FOR REFERENCE ONLY  
AND SUBJECT TO CHANGE WITHOUT NOTICE.  
UN-DIMENSIONED/NON-CRITICAL FEATURES  
MAY VARY IN SIZE AND LOCATION  
COLORS MAY VARY

**L-com®**  
an INFINIT® brand

Website: [www.L-com.com](http://www.L-com.com)  
Phone: 1.800.341.5266 | 1.978.682.6936



INTERPRET ALL DIMENSIONS AND  
TOLERANCES PER ASME Y14.5

|               |                 |
|---------------|-----------------|
| SCALE<br>NONE | SHEET<br>1 OF 1 |
|---------------|-----------------|

## DESCRIPTION

CAT5e ETHERNET LOOPBACK ADAPTER RJ48C JACK & RJ45  
PLUG, DARK BLUE

| SIZE | CAGE CODE | DRAWN BY | ITEM NO.     | REV |
|------|-----------|----------|--------------|-----|
| A    | 43321     | DMAY     | LLBADPC5E-BL | A1  |

6

5

4

3

2

1