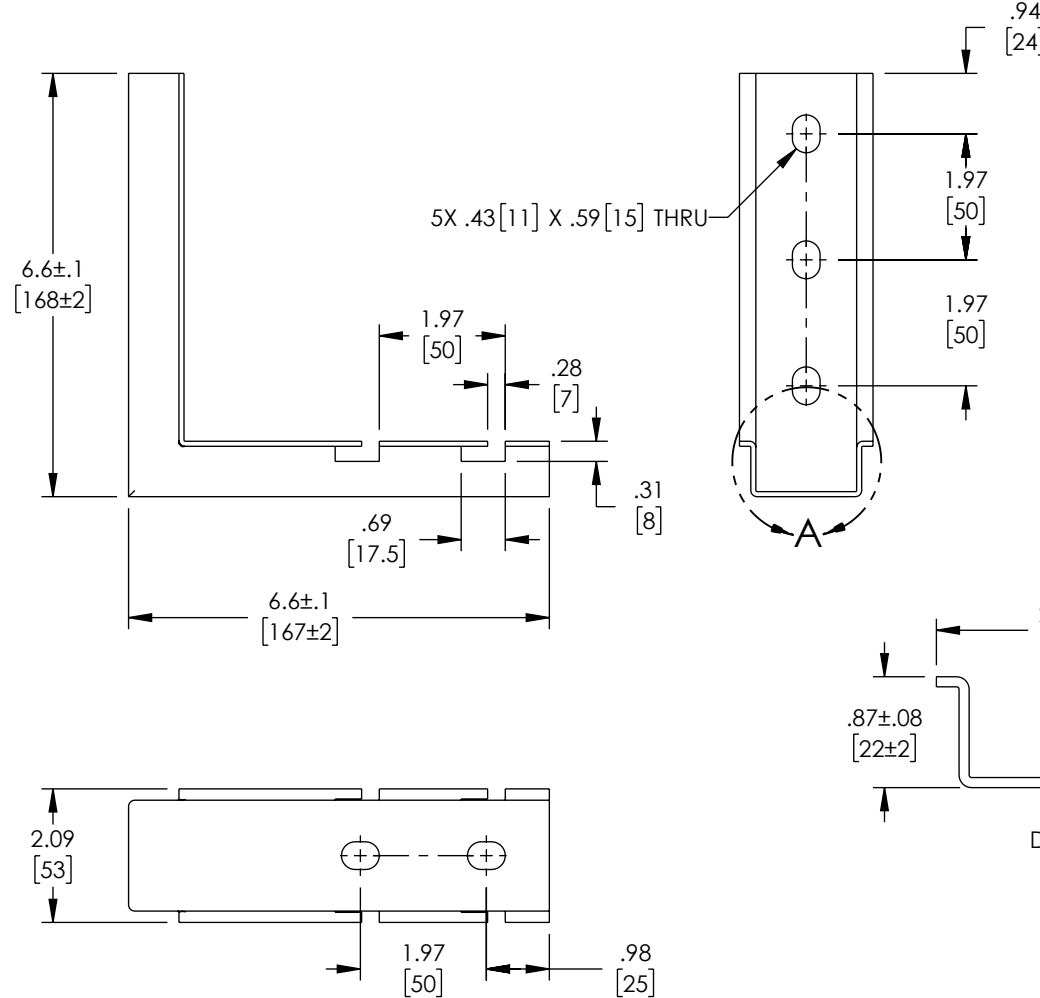
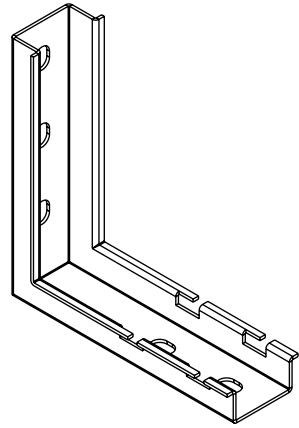


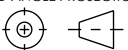
THE INFORMATION CONTAINED IN THIS DRAWING IS THE SOLE
PROPERTY OF L-COM, INC. ANY REPRODUCTION IN PART OR WHOLE
WITHOUT THE WRITTEN PERMISSION OF L-COM, INC. IS PROHIBITED.

REVISION					
ZONE	REV	DESCRIPTION	DATE	CHANGED BY	APPROVED
	B	ECO-12741	05/04/2023	DZINN	WDIBELLA



NOTES:

- ALL DIMENSIONS ARE FOR REFERENCE ONLY.
- ZINC PLATING THICKNESS $\geq 6 \mu\text{m}$.

UNLESS OTHERWISE SPECIFIED, DIMENSIONS ARE IN INCHES [mm]		APPROVALS		DATE		<div>L-com[™] an INFINITT[®] brand</div>		50 High Street, West Mill, North Andover, MA 01845 USA. Phone: 1.800.341.5266 1.978.682.6936		
OVERALL CABLE LENGTH TOLERANCE:		DRAWN BY DZINN		02/14/2022						
<12 [305] = +1 [25] / -0		CHECKED BY VCHAN		02/28/2022						
>12 [305] <=60 [1524] = +2 [51] / -0		APPROVED BY WDIBELLA		02/28/2022						
>60 [1524] <=120 [3048] = +4 [102] / -0						CATEGORY				
>120 [3048] <=300 [7620] = +6 [152] / -0						RACK ACCESSORIES				
>300 [7620] = +5% / -0										
ALL OTHER DIMENSIONAL TOLERANCES:		CONFIGURATION DETAILS OF UNDIMENSIONED FEATURES MAY VARY		PRODUCT DESCRIPTION						
.X = $\pm .2$ [5] .XX = $\pm .02$ [5] .XXX = $\pm .005$ [13]		FRACTIONS $\pm 1/32$ ANGLES $\pm 1^\circ$		L-SHAPED WALL MOUNT BRACKET - 7 INCH (167mm) 2PK						
THIRD-ANGLE PROJECTION		COLOR VARIATIONS MAY OCCUR		SIZE A		CAGE CODE 43321		ITEM NO. LC-LWB100		
								REV. B		
				SCALE: NONE		CAD FILE: lc-lwb100.SLDDRW			SHEET 1 OF 1	