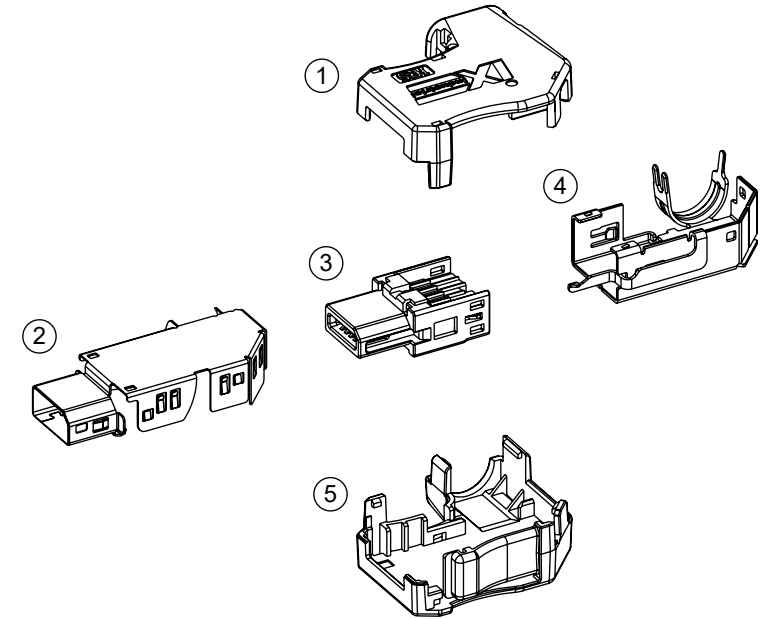
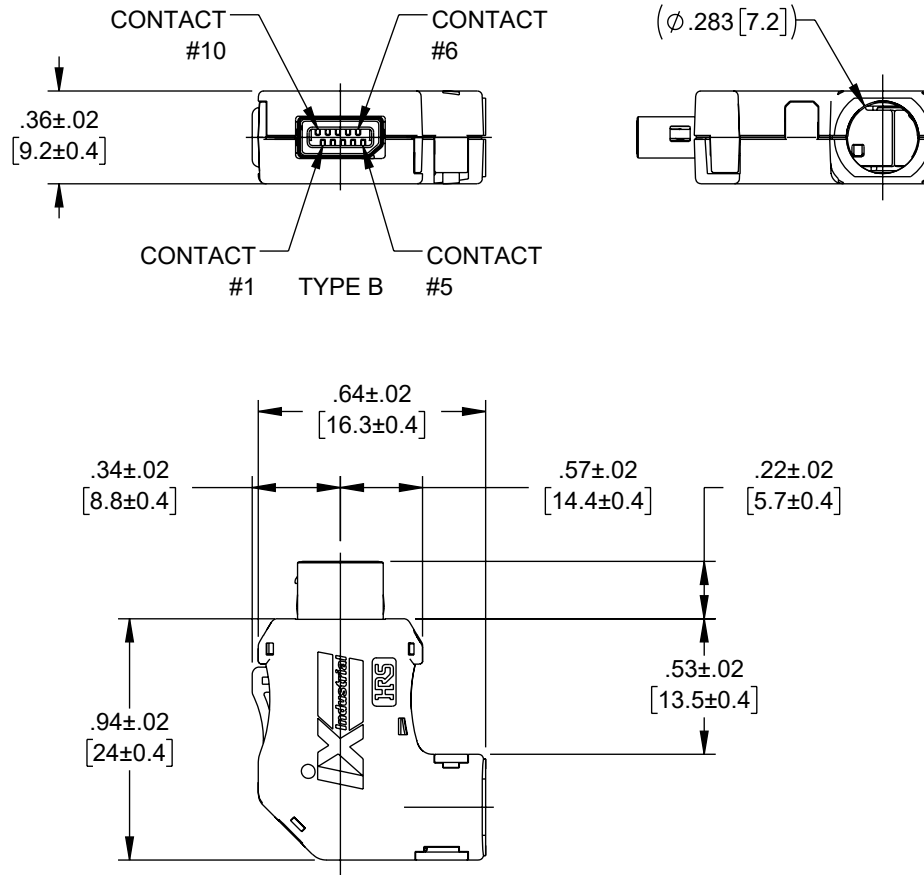


THE INFORMATION CONTAINED IN THIS DRAWING IS THE SOLE PROPERTY OF L-COM, INC. ANY REPRODUCTION IN PART OR WHOLE WITHOUT THE WRITTEN PERMISSION OF L-COM, INC. IS PROHIBITED.

REVISION				
ZONE	REV	DESCRIPTION	DATE	CHANGED BY
	A	INITIAL RELEASE	04/28/2023	KGLEBOVA
				GUTTADAURO



EXPLODED VIEW

PART TABLE	
ITEM	DESCRIPTION
1	COVER CASE
2	SHIELD SHELL
3	PLUG UNIT
4	SHIELD CASE
5	COVER CASE

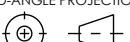
NOTES:

MECHANICAL DATA:

1. CONDUCTOR SIZE: 22AWG - 28AWG.
2. INSULATION O.D.: 1.55mm MAX.
3. BRAID SHIELD: TIN PLATING.
4. CABLE O.D.:  $\phi 6.3\text{mm}$  TO  $\phi 7.2\text{mm}$ .

MISCELLANEOUS:

5. THIS DRAWING SHOWS IX40G-B-10S-CVL2(7.0).
6. THIS PRODUCT (TYPE B) IS USED FOR NON ETHERNET APPLICATIONS LIKE SIGNALING, SERIAL OR OTHER INDUSTRIAL BUS COMMUNICATION SYSTEMS. PLEASE USE TYPE A FOR 10/100 MBIT/S AND 1/10 GBIT/S ETHERNET COMMUNICATION.
7. PRODUCT SHALL BE INDIVIDUALLY PACKAGED IN ACCORDANCE WITH L-COM SPECIFICATION PS-0031.
8. SHIPS UNASSEMBLED AND SHIELD SHELL IS PRE-BENT.

<div>UNLESS OTHERWISE SPECIFIED, DIMENSIONS ARE IN INCHES [mm]</div> <div>OVERALL CABLE LENGTH TOLERANCE: ≤12 [305] = +1 [25] / -0     &gt;12 [305] ≤60 [1524] = +2 [51] / -0     &gt;60 [1524] ≤120 [3048] = +4 [102] / -0     &gt;120 [3048] ≤300 [7620] = +6 [152] / -0     &gt;300 [7620] = +5% / -0</div> <div>ALL OTHER DIMENSIONAL TOLERANCES:     .X = ± .2 [5]      FRACTIONS ± 1/32     .XX = ± .02 [5]    ANGLES ± 1°     .XXX = ± .005 [13]</div> <div>THIRD-ANGLE PROJECTION </div>	APPROVALS	DATE	<div>L-com™ an INFINITI® brand</div>		<div>50 High Street, West Mill, North Andover, MA 01845 USA. Phone: 1.800.341.5266 1.978.682.6936</div>	
	DRAWN BY KGLEBOVA	04/12/2023				
	CHECKED BY BPUCHASKI	04/17/2023				
	APPROVED BY GUTTADAURO	04/20/2023				
CONFIGURATION DETAILS OF UNDIMENSIONED FEATURES MAY VARY			CATEGORY TELECOM / MODULAR			
			PRODUCT DESCRIPTION IX INDUSTRIAL RIGHT ANGLE PLUG, 10gig, B KEY, 90° UP DESIGN, SOLDER TYPE			
COLOR VARIATIONS MAY OCCUR			SIZE A	CAGE CODE 43321	ITEM NO. IXP-SRAU-B	REV. A
			SCALE: NONE		CAD FILE: ixp-srau-b.SLDDRW	
			SHEET 1 OF 1			