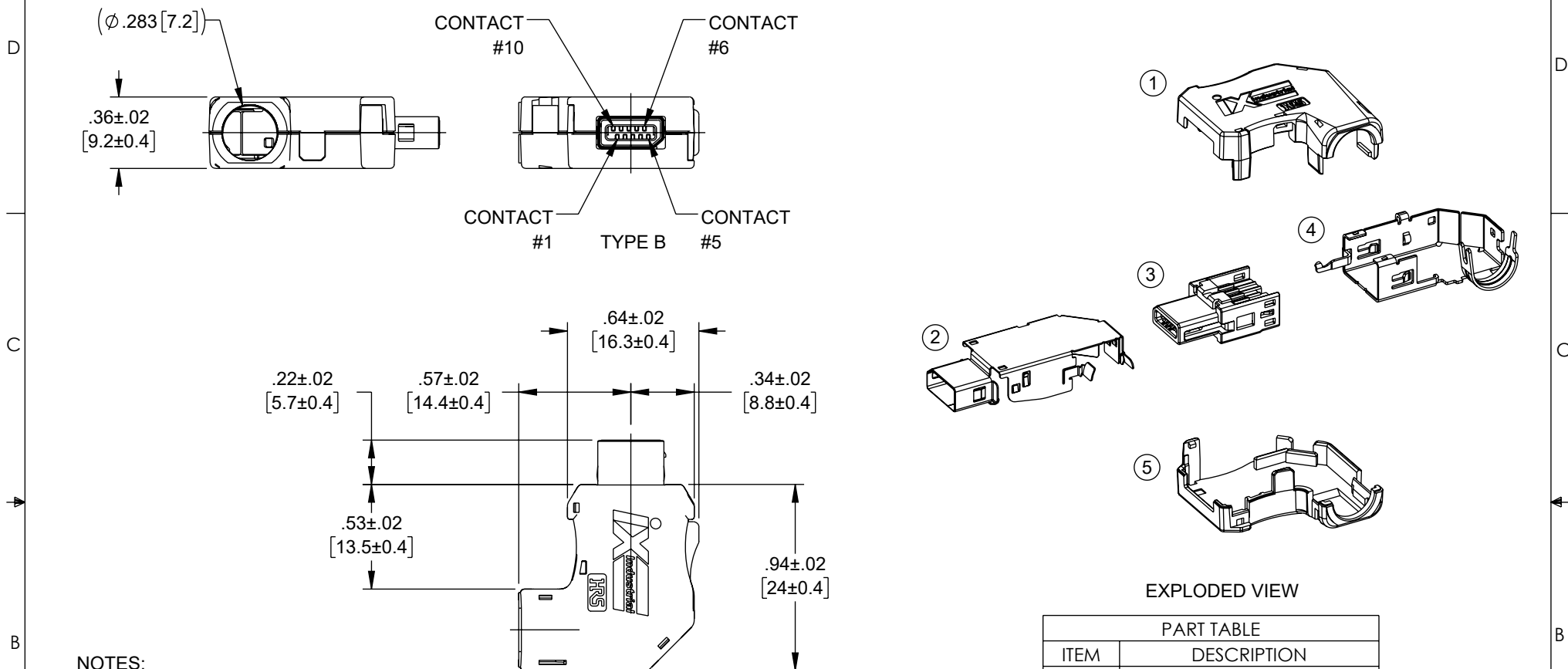


THE INFORMATION CONTAINED IN THIS DRAWING IS THE SOLE PROPERTY OF L-COM, INC. ANY REPRODUCTION IN PART OR WHOLE WITHOUT THE WRITTEN PERMISSION OF L-COM, INC. IS PROHIBITED.

REVISION				
ZONE	REV	DESCRIPTION	DATE	CHANGED BY
	A	INITIAL RELEASE	04/28/2023	KGLEBOVA
				GUTTADAURO



NOTES:

MECHANICAL DATA:

1. CONDUCTOR SIZE: 22AWG - 28AWG.
2. INSULATION O.D.: 1.55mm MAX.
3. BRAID SHIELD: TIN PLATING.
4. CABLE O.D.: $\phi 6.3\text{mm}$ TO $\phi 7.2\text{mm}$.

MISCELLANEOUS:

5. THIS DRAWING SHOWS IX40G-B-10S-CVL1(7.0).
6. THIS PRODUCT (TYPE B) IS USED FOR NON ETHERNET APPLICATIONS LIKE SIGNALING, SERIAL OR OTHER INDUSTRIAL BUS COMMUNICATION SYSTEMS. PLEASE USE TYPE A FOR 10/100 MBIT/S AND 1/10 GBIT/S ETHERNET COMMUNICATION.
7. PRODUCT SHALL BE INDIVIDUALLY PACKAGED IN ACCORDANCE WITH L-COM SPECIFICATION PS-0031.
8. SHIPS UNASSEMBLED AND SHIELD SHELL IS PRE-BENT.

EXPLODED VIEW

PART TABLE	
ITEM	DESCRIPTION
1	COVER CASE
2	SHIELD SHELL
3	PLUG UNIT
4	SHIELD CASE
5	COVER CASE

UNLESS OTHERWISE SPECIFIED, DIMENSIONS ARE IN INCHES [mm] OVERALL CABLE LENGTH TOLERANCE: $\leq 12 [305] = +1 [25] / -0$ $> 12 [305] \leq 60 [1524] = +2 [51] / -0$ $> 60 [1524] \leq 120 [3048] = +4 [102] / -0$ $> 120 [3048] \leq 300 [7620] = +6 [152] / -0$ $> 300 [7620] = +5\% / -0$ ALL OTHER DIMENSIONAL TOLERANCES: .X = $\pm .2 [5]$ FRACTIONS $\pm 1/32$.XX = $\pm .02 [5]$ ANGLES $\pm 1^\circ$.XXX = $\pm .005 [13]$ THIRD-ANGLE PROJECTION 	APPROVALS	DATE	 an INFINITI® brand 50 High Street, West Mill, North Andover, MA 01845 USA. Phone: 1.800.341.5266 1.978.682.6936
	DRAWN BY KGLEBOVA	04/12/2023	
	CHECKED BY BPUCHASKI	04/17/2023	CATEGORY TELECOM / MODULAR
	APPROVED BY GUTTADAURO	04/20/2023	PRODUCT DESCRIPTION IX INDUSTRIAL RIGHT ANGLE PLUG, 10gig, B KEY, 90 DEGREE DOWN DESIGN, SOLDER TYPE
	CONFIGURATION DETAILS OF UNDIMENSIONED FEATURES MAY VARY	SIZE A	CAGE CODE 43321
	COLOR VARIATIONS MAY OCCUR	ITEM NO. IXP-SRAD-B	REV. A
		SCALE: NONE	CAD FILE: ixp-srad-b.SLDDRW
			SHEET 1 OF 1