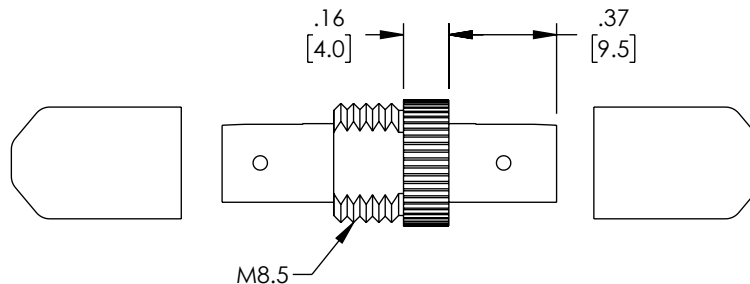
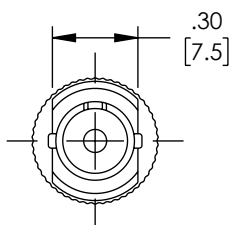
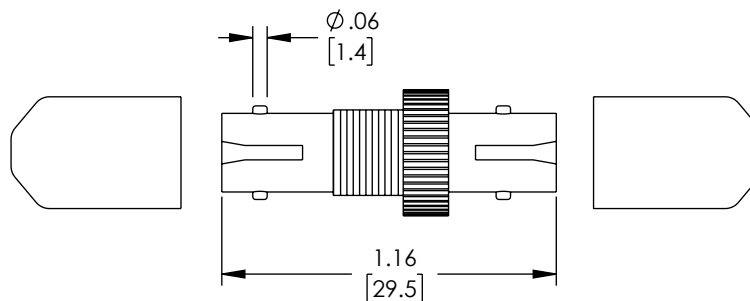
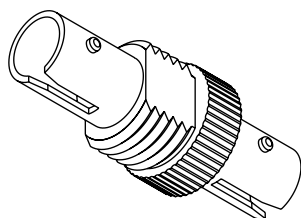


THE INFORMATION CONTAINED IN THIS DRAWING IS THE SOLE
PROPERTY OF L-COM, INC. ANY REPRODUCTION IN PART OR WHOLE
WITHOUT THE WRITTEN PERMISSION OF L-COM, INC. IS PROHIBITED.

REVISIONS			
REV	DESCRIPTION	DATE	APPROVED
A	INITIAL RELEASE	8/20/21	PHOSPODAR



M8.5-

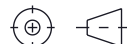
UNLESS OTHERWISE SPECIFIED,
DIMENSIONS ARE IN INCHES [mm]

OVERALL CABLE LENGTH TOLERANCE

≤ 12 [305]	$= +1$ [25] / -0
> 12 [305] ≤ 60 [1524]	$= +2$ [51] / -0
> 60 [1524] ≤ 120 [3048]	$= +4$ [102] / -0
> 120 [3048] ≤ 300 [7620]	$= +6$ [152] / -0
> 300 [7620]	$= +5\%$ / -0

ALL OTHER DIMENSIONAL TOLERANCES
FIBER OPTIC Fiber Optic
.XX = $\pm .02$ [.5] $\pm 1/32$
.XXX = $\pm .005$ [.13] ANGLES $\pm 1^\circ$

THIRD-ANGLE PROJECTION



APPROVALS

DATE _____

DRAWN BY

08/12/2021

DATE	
CHECKED BY	

--	--

APPROVED BY _____

08/10/2021	
------------	--

CONFIGURATION DETAILS OF
UNDIMENSIONED FEATURES
MAY VARY

COLOR VARIATION
MAY OCCUR



an INFINIT^e brand

50 High Street, West Mill,
North Andover, MA 01845 USA.
Phone: 1.800.341.5266
1.978.682.6936

CATEGORY

FIBER OPTICS

PRODUCT DESCRIPTION
Simplex single mode, zinc alloy body, ceramic sleeve SIMPLEX SMF. ZINC ALLOY BODY CERAMIC SLEEVE

SIZE A	CAGE CODE 43321	ITEM NO. EOA STSM1 MC00	REV A
------------------	---------------------------	-----------------------------------	-----------------

A	43521	FOA-313MT-MC00	A
SCALE: NONE		CAD FILE: fca.stm.mc00.sldprt	SHEET 1 OF 1

REGULATORY COMPLIANCE:
EU RoHS DIRECTIVE (MOST RECENT RELEASED VERSION)