

6

5

4

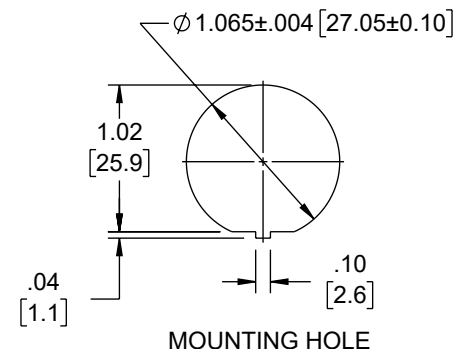
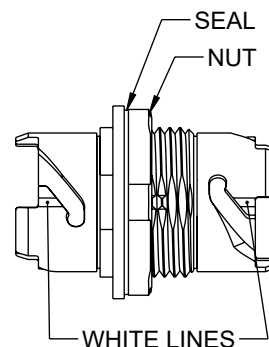
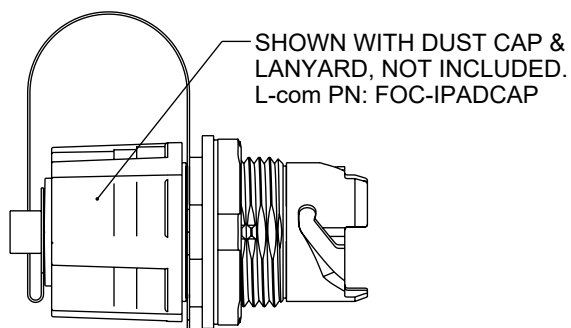
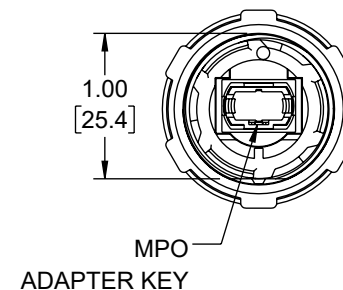
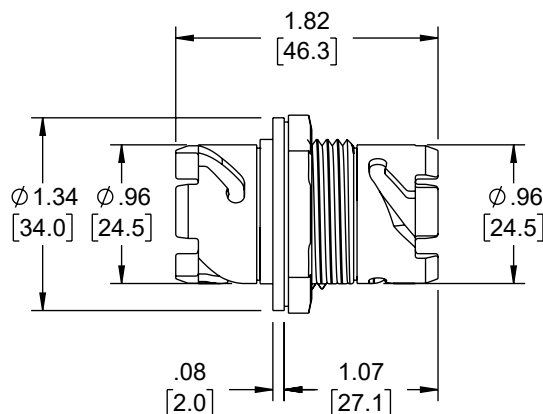
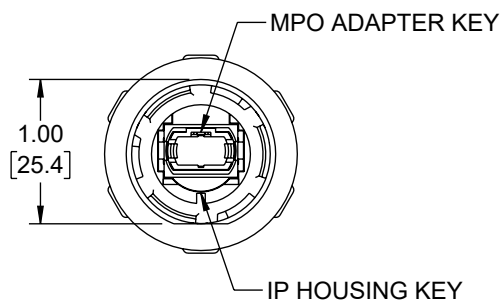
3

2

1

## REVISION

| ZONE | REV | DESCRIPTION           | DATE       | CHANGED BY | APPROVED   |
|------|-----|-----------------------|------------|------------|------------|
|      | B   | UPDATED PER ECO-13399 | 02/15/2024 | HBAKKE     | REVANGELIS |



## NOTES:

1. ASSEMBLY SHALL BE INDIVIDUALLY PACKAGED IN  
ACCORDANCE WITH L-COM SPECIFICATION PS-0031.

REGULATORY COMPLIANCE:  
EU RoHS DIRECTIVE (MOST RECENT RELEASED VERSION)

THE INFORMATION CONTAINED IN THIS DRAWING IS THE SOLE PROPERTY OF INFINITE ELECTRONICS, INC. ANY REPRODUCTION IN PART OR WHOLE WITHOUT THE WRITTEN PERMISSION OF INFINITE ELECTRONICS, INC. IS PROHIBITED. THESE COMMODITIES, TECHNOLOGY OR SOFTWARE WERE EXPORTED FROM THE UNITED STATES IN ACCORDANCE WITH THE EXPORT ADMINISTRATION REGULATIONS. DIVERSION CONTRARY TO U.S. LAW PROHIBITED.

6

5

4

3

2

1

UNLESS OTHERWISE SPECIFIED  
LEADING DIMENSIONS ARE INCHES  
DIMENSIONS IN [ ] ARE MILLIMETERS

TOLERANCES:

|                          |                         |
|--------------------------|-------------------------|
| X = $\pm .2$ [5]         | FRACTIONS<br>$\pm 1/32$ |
| .XX = $\pm .02$ [0.5]    | ANGLES $\pm 1^\circ$    |
| .XXX = $\pm .005$ [0.13] |                         |

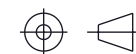
CABLE LENGTH TOLERANCES:

|                 |                   |                   |                   |
|-----------------|-------------------|-------------------|-------------------|
| $\leq 12$ [305] | $\leq 12$ [305]   | $\leq 12$ [305]   | $\leq 12$ [305]   |
| $> 12$ [305]    | $\leq 60$ [1524]  | $\leq 60$ [1524]  | $\leq 60$ [1524]  |
| $> 60$ [1524]   | $\leq 120$ [3048] | $\leq 120$ [3048] | $\leq 120$ [3048] |
| $> 120$ [3048]  | $\leq 300$ [7620] | $\leq 300$ [7620] | $\leq 300$ [7620] |
| $> 300$ [7620]  | $\leq 300$ [7620] | $\leq 300$ [7620] | $\leq 300$ [7620] |

ALL DIMENSIONS ARE FOR REFERENCE ONLY  
AND SUBJECT TO CHANGE WITHOUT NOTICE.  
UN-DIMENSIONED/NON-CRITICAL FEATURES  
MAY VARY IN SIZE AND LOCATION  
COLORS MAY VARY

**L-com**  
an INFINIT<sup>®</sup> brand

Website: [www.L-com.com](http://www.L-com.com)  
Phone: 1.800.341.5266 | 1.978.682.6936



INTERPRET ALL DIMENSIONS AND  
TOLERANCES PER ASME Y14.5

SCALE SHEET  
NONE 1 OF 1

## DESCRIPTION

IP68 MPO ADAPTER, INLINE, SMF/MMF

| SIZE | CAGE CODE | DRAWN BY | ITEM NO.  | REV |
|------|-----------|----------|-----------|-----|
| A    | 43321     | DZINN    | FOA-MPI-0 | B   |