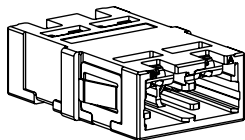
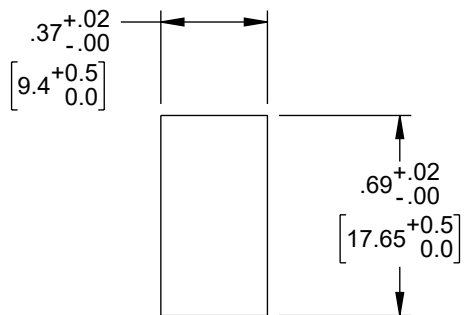
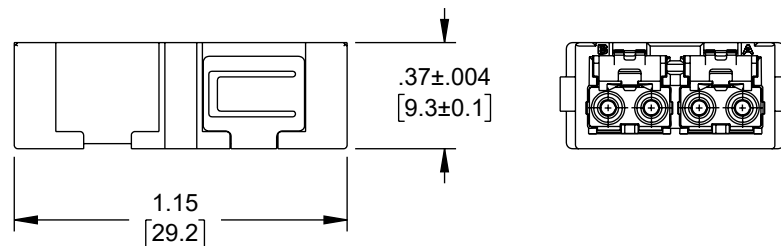
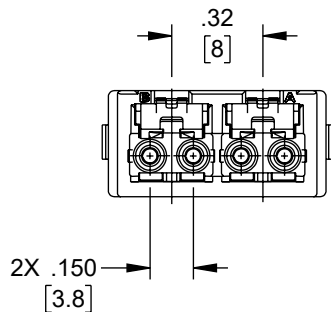
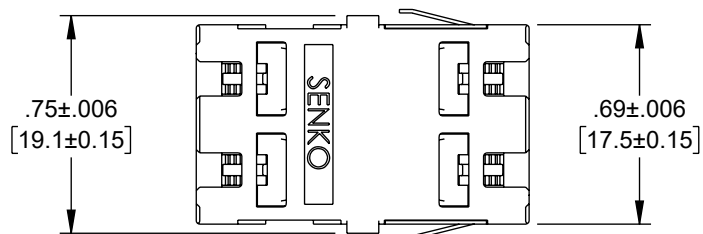


THE INFORMATION CONTAINED IN THIS DRAWING IS THE SOLE
PROPERTY OF L-COM, INC. ANY REPRODUCTION IN PART OR WHOLE
WITHOUT THE WRITTEN PERMISSION OF L-COM, INC. IS PROHIBITED.

REVISION					
ZONE	REV	DESCRIPTION	DATE	CHANGED BY	APPROVED
	A	INITIAL RELEASE	08/15/2023	DZINN	PHOSPODAR



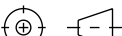
MTG HOLE
1.7mm MAX THK
REF ONLY



NOTES:

- ADAPTER SUPPLIED WITH 4 DUST CAPS INSTALLED WHICH ARE NOT SHOWN.
- ADAPTER SHALL BE INDIVIDUALLY PACKAGED IAW L-COM SPECIFICATION PS-0031.

REGULATORY COMPLIANCE:
EU RoHS DIRECTIVE (MOST RECENT RELEASED VERSION)

UNLESS OTHERWISE SPECIFIED, DIMENSIONS ARE IN INCHES [mm]		APPROVALS		DATE		<div>L-com™</div> <div>an INFINIT® brand</div>		50 High Street, West Mill, North Andover, MA 01845 USA Phone: 1.800.341.5266 1.978.682.6936					
OVERALL CABLE LENGTH TOLERANCE: ≤12 [305] = +1 [25] / -0 >12 [305] ≤60 [1524] = +2 [51] / -0 >60 [1524] ≤120 [3048] = +4 [102] / -0 >120 [3048] ≤300 [7620] = +6 [152] / -0 >300 [7620] = +5% / -0 ALL OTHER DIMENSIONAL TOLERANCES: .X = ± .2 [5] FRACTIONS .XX = ± .02 [.5] ± 1/32 .XXX = ± .005 [.13] ANGLES ± 1°		DRAWN BY DZINN		08/15/2023		CATEGORY FIBER OPTIC		PRODUCT DESCRIPTION CS DUAL CHANNEL (4F) ADAPTER, NO FLANGE, AQUA					
		CHECKED BY KGLEBOVA		08/15/2023									
		APPROVED BY JJOHNSTON		08/15/2023									
<div>THIRD-ANGLE PROJECTION</div> <div></div>		CONFIGURATION DETAILS OF UNDIMENSIONED FEATURES MAY VARY		COLOR VARIATIONS MAY OCCUR		SIZE		CAGE CODE		ITEM NO.		REV	
						A		43321		FOA-CS2-05		A	
						SCALE: NONE		CAD FILE: FOA-CS2-05.SLDDRW		SHEET 1 OF 1			