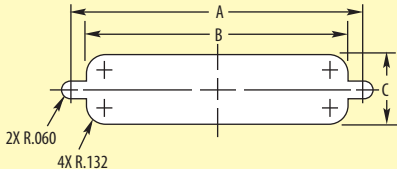




Recommended panel openings for rear mounted D-Sub adapters



PANEL MOUNTING DIMENSIONS (shown in inches/cm)

CONTACTS	DIM. A	DIM. B	DIM. C
DB9 or HD15	0.984 (2.5cm)	0.806 (2.0cm)	.449 (1.1cm)
DB15 or HD26	1.312 (3.3cm)	1.134 (2.9cm)	.449 (1.1cm)
DB25 or HD44	1.852 (4.7cm)	1.684 (4.3cm)	.449 (1.1cm)
DB37 or HD62	2.500 (6.4cm)	2.326 (5.9cm)	.449 (1.1cm)
DB50 or HD78	2.406 (6.1cm)	2.218 (5.6cm)	.555 (1.4cm)