

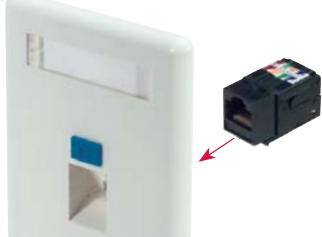
How to install a keystone style connector into a wall plate



Online Video

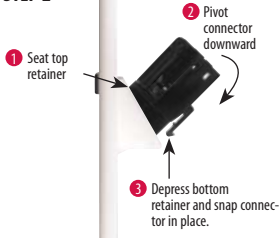
www.L-com.com/Videos/A12

STEP 1



Align the connector with the wall plate with the spring retainer side down for 45 degree entry plates (as shown) or spring retainer side up for standard entry wall plates.

STEP 2



Seat fixed retainer first. Pivot connector down towards the spring retainer while depressing the spring retainer. Press connector into plate until retainer snaps and locks firmly in place.

STEP 3



The wall plate can now be installed and cables attached.