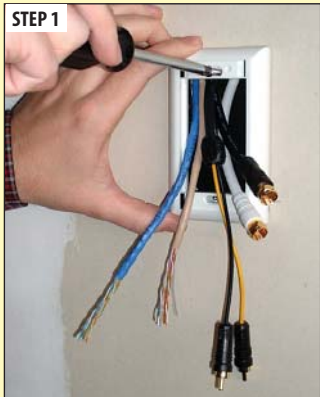


## Installing an L-com Information Outlet System



**Online Video**

[www.L-com.com/Videos/A17](http://www.L-com.com/Videos/A17)



1. Pull all cables through the wall plate and attach the plate to the wall box or bracket.



2. Attach cables to each module. At this time, it's best to test cable connections for continuity.



3. Insert completed modules into wall plate and snap firmly into place.