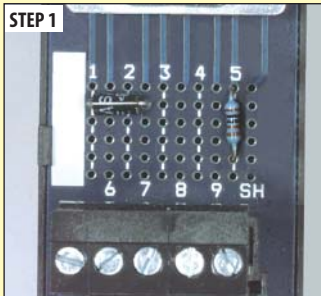




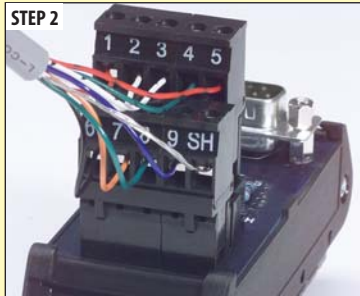
Interface module assembly example

STEP 1



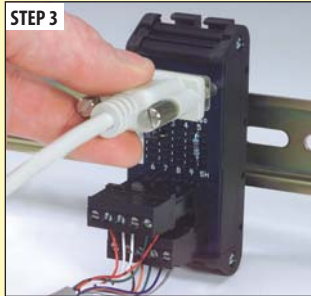
1. Prepare component leads and insert into the desired positions.

STEP 2



2. Strip wire leads approximately 0.3". Insert stripped wire leads into the desired positions and tighten terminal block screws.

STEP 3



3. Slide interface module onto DIN rail. Plug cable assembly into interface module connector and secure cable hardware to interface module threaded inserts.