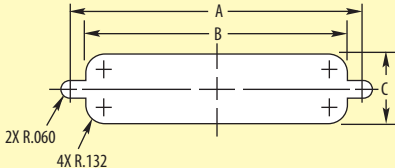




Recommended panel openings for rear mounted D-Sub adapters



PANEL MOUNTING DIMENSIONS (shown in inches/cm)

| CONTACTS | DIM. A | DIM. B | DIM. C |
|--------------|---------------|---------------|--------------|
| DB9 or HD15 | 0.984 (2.5cm) | 0.806 (2.0cm) | .449 (1.1cm) |
| DB15 or HD26 | 1.312 (3.3cm) | 1.134 (2.9cm) | .449 (1.1cm) |
| DB25 or HD44 | 1.852 (4.7cm) | 1.684 (4.3cm) | .449 (1.1cm) |
| DB37 or HD62 | 2.500 (6.4cm) | 2.326 (5.9cm) | .449 (1.1cm) |
| DB50 or HD78 | 2.406 (6.1cm) | 2.218 (5.6cm) | .555 (1.4cm) |