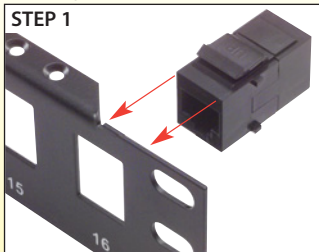
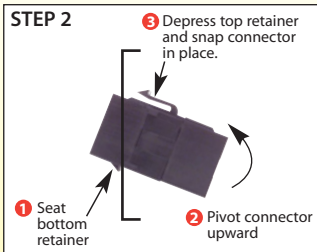


! TIP: *How to panel mount a keystone style connector*

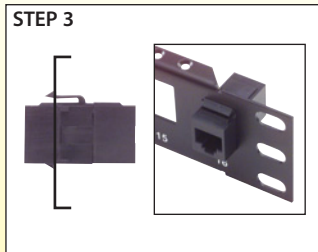
Keystone style refers to the snap-in mounting mechanism that many manufacturers have adopted. Unfortunately, this is not based on an agreed upon standard. As with any de facto standard, slight variations in size exist between various manufacturers' products. The recommended panel openings and maximum panel thickness are best fit values that were chosen with variations taken into consideration.



Align connector in proper orientation to the opening.



Seat bottom retainer and pivot connector upward while depressing upper retainer.



Connector fully seated.