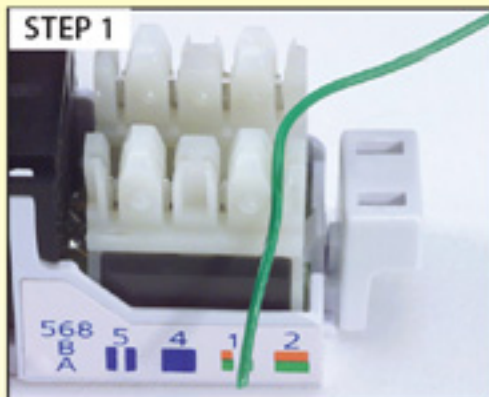
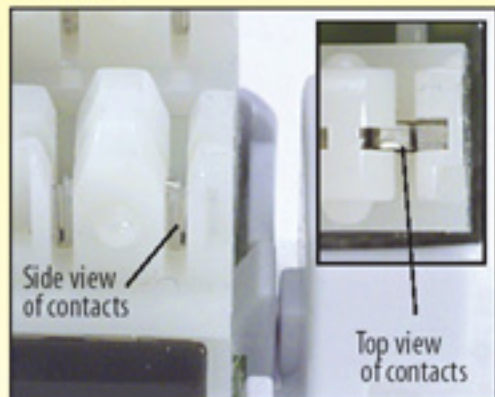
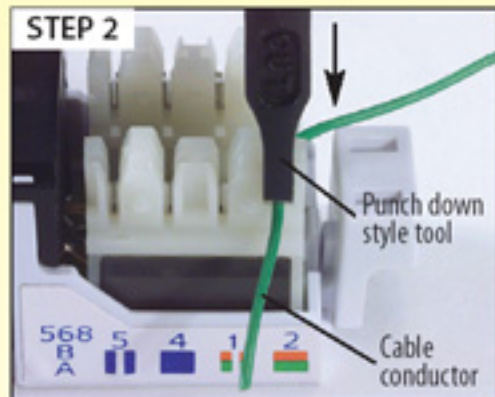


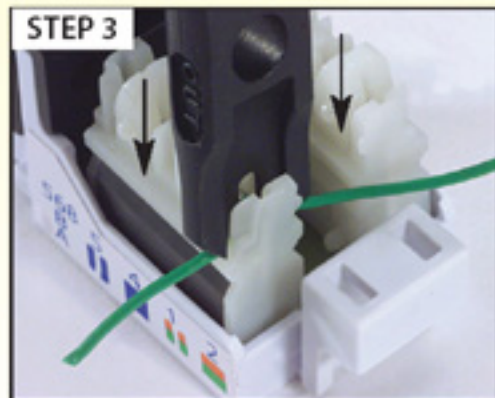
TIP: How does a 110 IDC contact work?



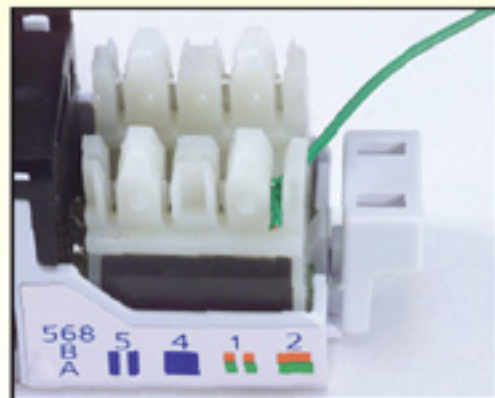
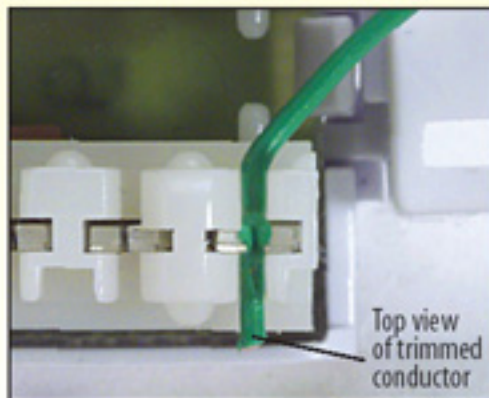
Place the solid or stranded conductor between the two contacts.



Punch the conductor down into place using a 110 style tool. You can use part # H351.



As you continue to push the tool down, the IDC contacts cut through the conductor jacket and touch the copper conductor. After the tool is released, you will see that the excess conductor is severed.



The conductor is now pushed down tightly between the IDC contacts.