

Interconnecting Two Mating CRMN Series Connectors



DB9



DB15



DB25



JB37

Your cable is shipped with male holddown screws regardless of the connector gender. If used as is, you won't need the 4 hex jack screws. To reverse the hardware and allow interconnection and securing two mating connectors, follow the instructions below.



STEP 1

This cable is shipped with male knurled holddown screws regardless of D-Sub gender.



STEP 2

If you need a female fastener to interconnect two cables, simply unscrew the male holddown screws.



STEP 3

Then, install (threaded) hex jack screws located in the bag marked "Cable Interconnect Hardware".

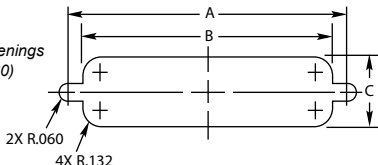


STEP 4

Interconnect the cables and secure the mating hardware.

Panel Mounting CRMN Series Cables

Recommended panel openings
(max panel thickness .060)



PANEL MOUNTING
DIMENSIONS
(shown in inches)

CONTACTS	DIM. A	DIM. B	DIM. C
DB9	0.984	0.806	.449
DB15	1.312	1.134	.449
DB25	1.852	1.684	.449
DB37	2.500	2.326	.449

Your cable is shipped with male holddown screws regardless of the connector gender. If used as is, you won't need the 4 hex jack screws. To reverse the hardware and allow for panel mounting, follow these instructions.



STEP 1

This cable is shipped with male knurled holddown screws regardless of D-Sub gender.



STEP 2

If you need a female fastener to mount on a panel with a .060 maximum thickness, simply unscrew the male holddown screws.



STEP 3

Insert the cable into a proper panel opening. Then, secure with the (threaded) hex jack screws located in the bag marked "Panel Mount Hardware" as shown.