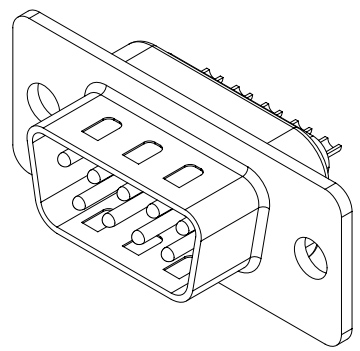
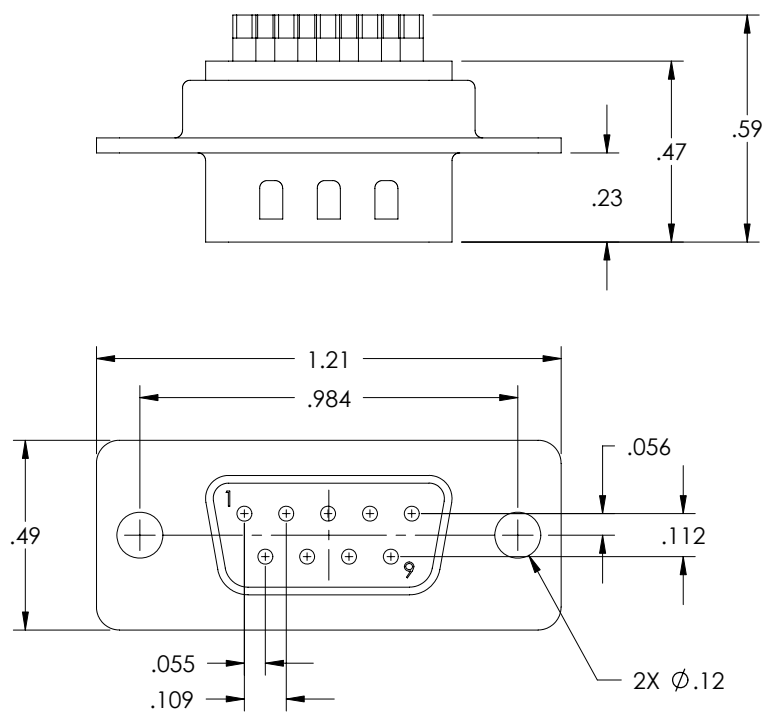


THE INFORMATION CONTAINED IN THIS DRAWING IS THE SOLE PROPERTY OF L-COM, INC. ANY REPRODUCTION IN PART OR WHOLE WITHOUT THE WRITTEN PERMISSION OF L-COM, INC. IS PROHIBITED.

REVISIONS			
REV	DESCRIPTION	DATE	APPROVED
A	INITIAL RELEASE	12/09/03	B.MAZEJKA
B	ECN 1682 - CHG'D COMP SPEC TABLE. GOLD FLASH PLATED	02/27/04	B.MAZEJKA
C	ECN2785: SOLDER CUP PLATING WAS TIN LEAD	03/21/07	D.PARHAM



NOTES:

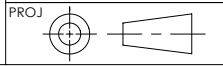
MATERIAL:
 CONNECTOR SHELL: STEEL
 CONNECTOR INSULATOR: THERMOPLASTIC, UL94V-0 RATED
 CONTACTS: COPPER ALLOY

FINISH:
 CONNECTOR SHELL: TIN PLATED
 CONTACTS: GOLD FLASH IN CONTACT AREA OVER NICKEL PLATE
 SOLDER CUPS: TIN PLATED

ELECTRICAL:
 CURRENT RATING: 5 AMP
 DIELECTRIC WITHSTANDING VOLTAGE: 1000 VAC rms
 INSULATION RESISTANCE: 5000MΩ @ 500VDC
 CONTACT RESISTANCE: 10mΩ MAX

MISCELLANEOUS:
 OPERATING TEMPERATURE: -55°C TO +105°C

DIMENSIONS ARE IN INCHES [mm]
 UNLESS OTHERWISE SPECIFIED,
 TOLERANCES TO BE:
 .X ±.1 [2.5] ANGLES ±2°
 .XX ±.01 [.25]
 .XXX ±.005 [0.13]
 OVERALL CABLE LENGTH TOL:
 ≤ 60 [1524] +3 [76.2] / - 0
 > 60 [1524] +5% / -0%



APPROVALS	DATE
DRAWN BY B.MAZEJKA	11/10/2003
CHECKED BY C.McCORMICK	12/08/2003
APPROVED BY D.PARHAM	12/08/2003

CONFIGURATION DETAILS OF
 UNDIMENSIONED FEATURES
 MAY VARY

L-com CONNECTIVITY PRODUCTS		45 BEECHWOOD DRIVE NORTH ANDOVER, MA 01845	
CATEGORY		DATA CABLING	
PRODUCT DESCRIPTION		DB9M SOLDER CUP CONNECTOR	
SIZE A	FSCM NO. 43321	DWG. NO. SD9P-OD1	REV. C
SCALE: NONE CAD FILE: SD9P-OD1.SLDDRW			SHEET 1 OF 1