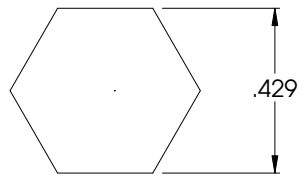
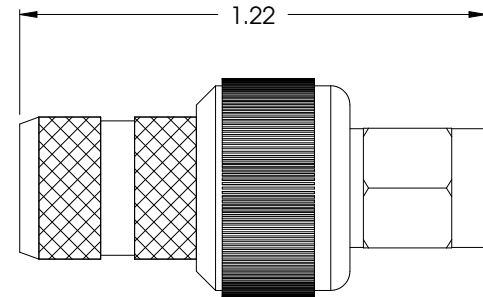
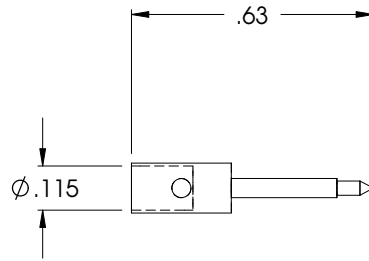
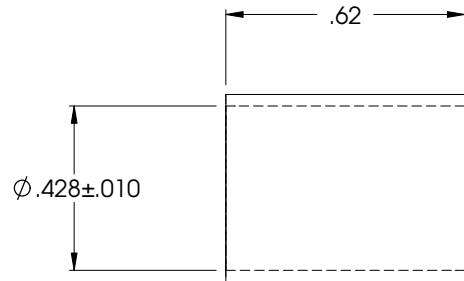
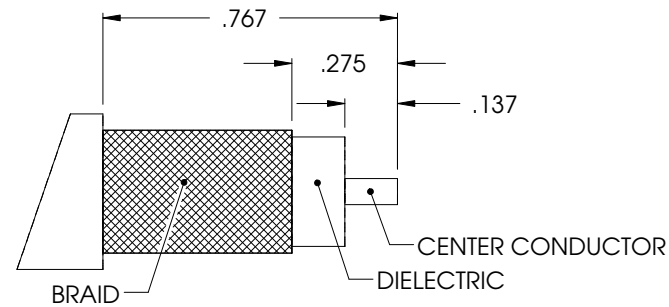


THE INFORMATION CONTAINED IN THIS DRAWING IS THE SOLE PROPERTY OF L-COM, INC. ANY REPRODUCTION IN PART OR WHOLE WITHOUT THE WRITTEN PERMISSION OF L-COM, INC. IS PROHIBITED.

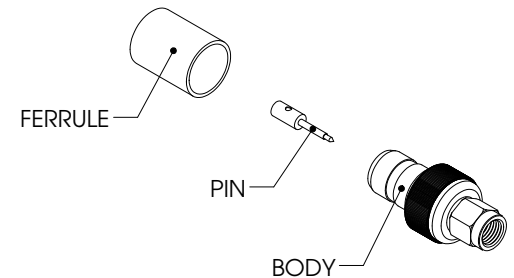
REVISIONS			
REV	DESCRIPTION	DATE	APPROVED
A	INITIAL RELEASE	11/30/04	MCCORMICK
B	ECN# 2192 REDOCUMENTATION PROJECT	09/07/05	MCCORMICK
C	REVISED PLATING THICKNESS	03/10/06	MCCORMICK



RECOMMENDED FERRULE
CRIMP SIZE
*CENTER PIN: SOLDER



RECOMMENDED
CABLE STRIPPING
DIMENSIONS



Component Specifications	
Material	
Body	Brass per ASTM-B-16, Half Hard
Ferrule	Brass or Copper Alloy, Rockwell F65 max
Pin	Brass per ASTM-B-16, Half Hard
Insulator	Teflon
Finish	
Body	Gold plate per MIL-G-45204, type 1, grade C. 3 microinch minimum.
Ferrule	Gold plate per MIL-G-45204, type 1, grade C. 3 microinch minimum.
Pin	Gold plate per MIL-G-45204, type 1, grade C. 30 microinch minimum.
Electrical	
Impedance	50 Ohm

CS-271

REFERENCE THE FOLLOWING DOCUMENTS:

- [CONNECTOR CHARACTERISTICS LCC-001](#)
- [CONNECTOR INTERFACE LIS-001](#)
- [TERMINATION INSTRUCTIONS LTI-001](#)

APPLICATION: LMR400 CABLE ASSEMBLIES

UNLESS OTHERWISE SPECIFIED,
DIMENSIONS ARE IN INCHES
TOLERANCES ARE:
X ±.1
XX ±.05
XXX ±.005
CABLE LENGTH TOLERANCE
<300" ±5% >300" ±2%

APPROVALS	DATE
DRAWN BY C.MCCORMICK	11/30/2004
CHECKED BY D.PARHAM	11/30/2004
APPROVED BY R.CARRICK	11/30/2004

CONFIGURATION DETAILS OF
UNDIMENSIONED FEATURES
MAY VARY

L-com
CONNECTIVITY
PRODUCTS
45 BEECHWOOD DRIVE
NORTH ANDOVER, MA
01845

PRODUCT DESCRIPTION SMA PLUG LMR400	
DRAWING TITLE OUTLINE DRAWING	
SIZE A	FSCM NO. 43321
DWG. NO. HPC401-OD1	REV. C
SCALE: NONE CAD FILE: HPC401-OD1.SLDDRW SHEET 1 OF 1	