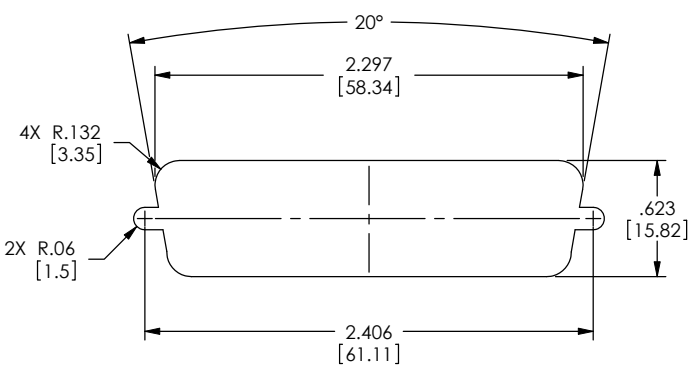


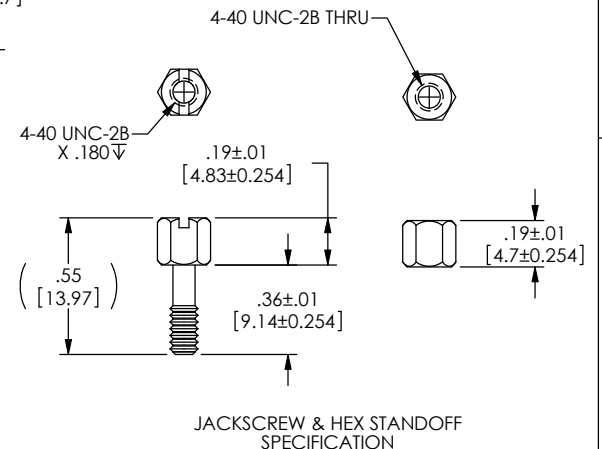
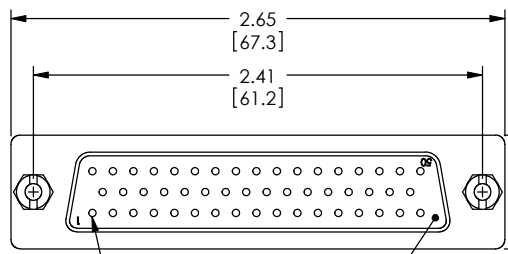
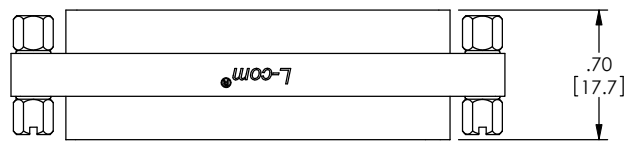
THE INFORMATION CONTAINED IN THIS DRAWING IS THE SOLE PROPERTY OF L-COM, INC. ANY REPRODUCTIONS IN PART OR WHOLE WITHOUT THE WRITTEN PERMISSION OF L-COM, INC. IS PROHIBITED.

REVISIONS			
REV	DESCRIPTION	DATE	CHANGED BY
E	ECN 99999: UPDATED DRAWING AND NEW FORMAT	2/8/10	D. FRISIELLO
F	ECN 5937: ADDED NOTE FOR PANEL MOUNTING	1/23/12	D. FRISIELLO



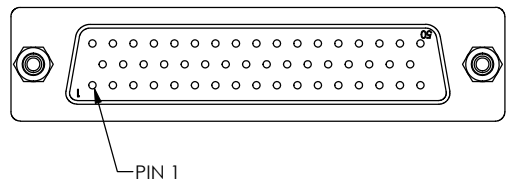
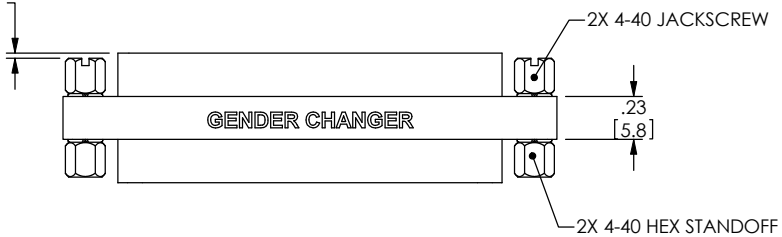
RECOMMENDED PANEL OPENING
(MAX PANEL THICKNESS: 0.06")

NOTE: DIFFERENT STANDOFFS AND JACK SCREWS ARE REQUIRED FOR PANEL MOUNTING. SEE WWW.L-COM.COM OR MASTER CATALOG FOR DETAILS.



NOTES:
 MATERIAL:
 SHELL: STEEL
 CONTACTS: COPPER ALLOY
 HARDWARE: BRASS
 INSULATOR: PBT FIBER REINFORCED (UL94V-0 RATED)
 FINISH:
 SHELL: TIN/NICKEL PLATED
 CONTACTS: GOLD FLASH PLATED, 1-5μ INCHES
 HARDWARE: NICKEL PLATED
 ELECTRICAL:
 CURRENT RATING: 3 AMP
 INSULATION RESISTANCE: 1000 MΩ MIN @500 VDC
 DIELECTRIC WITHSTANDING VOLTAGE: 1000 VAC (FOR ONE MINUTE)
 MISCELLANEOUS:
 OPERATING TEMPERATURE RANGE: -55°C TO +105°C.
 ALL CONTACTS WIRED STRAIGHT THROUGH.
 COMPONENT SHALL BE TESTED FOR CONTINUITY.

4X .03^{+0.00}_{-.03}
 [0.76 0 -0.762]



LABELING:
 PANTONE 2945 BLUE. "L-COM" FONT MyriaMM ITALIC.
 "GENDER CHANGER" FONT ARIAL BOLD, TEXT HEIGHTS: .085"
 TEXT COLOR; WHITE.

PACKAGING:
 COMPONENT SHALL BE INDIVIDUALLY PACKAGED IN ACCORDANCE WITH L-COM SPECIFICATION PS-0031.

RoHS Compliant ✓

UNLESS OTHERWISE SPECIFIED, DIMENSIONS ARE IN INCHES (MM)	APPROVALS	DATE
	DRAWN BY R. CARREK	09/28/2000
	CHECKED BY T. CLARK	09/28/2000
	APPROVED BY D. PARHAM	09/28/2000
DIMENSIONAL TOLERANCES: .X = ±.1 .XX = ±.01 .XXX = ±.005	CONFIGURATION DETAILS OF UNDIMENSIONED FEATURES MAY VARY	
ANGULAR TOLERANCES: ALL = ±1°	COLOR VARIATIONS MAY OCCUR	
PROJECTION		

		45 BEECHWOOD DRIVE NORTH ANDOVER, MA 01845	
CATEGORY: D-SUBMINIATURE			
PRODUCT DESCRIPTION: GENDER CHANGER, DB50 FEMALE/FEMALE			
SIZE: B	PSCM NO.: 43321	DWG. NO.: DGB50F	REV.: F
SCALE: 2:1		CAD FILE: DGB50F.SLDDRW	
			SHEET 1 OF 1