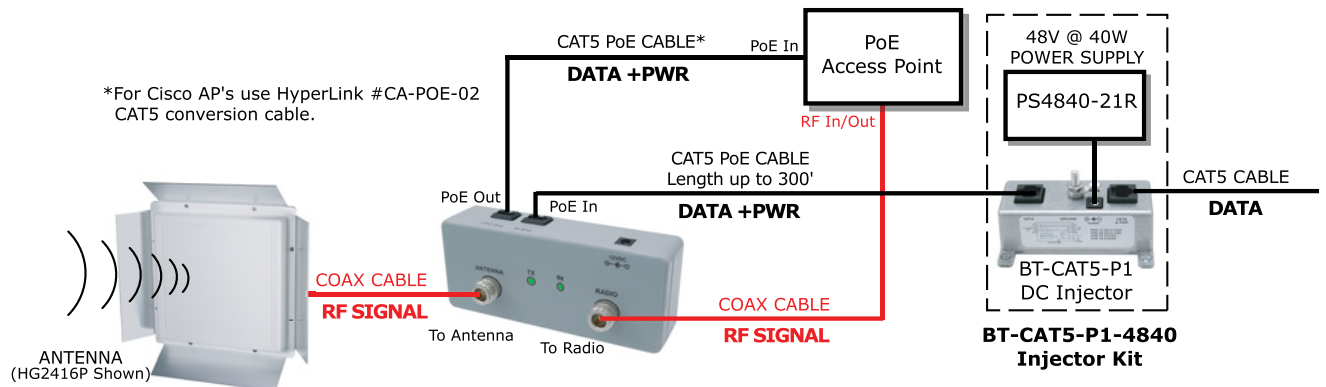


PoE Amplifiers

Power Over Ethernet (PoE) equipped amplifiers are becoming more popular today as many applications require remote location of wireless communications equipment where power is not readily available. Amplifiers with PoE interfaces derive their power via the attached Cat5 cable.

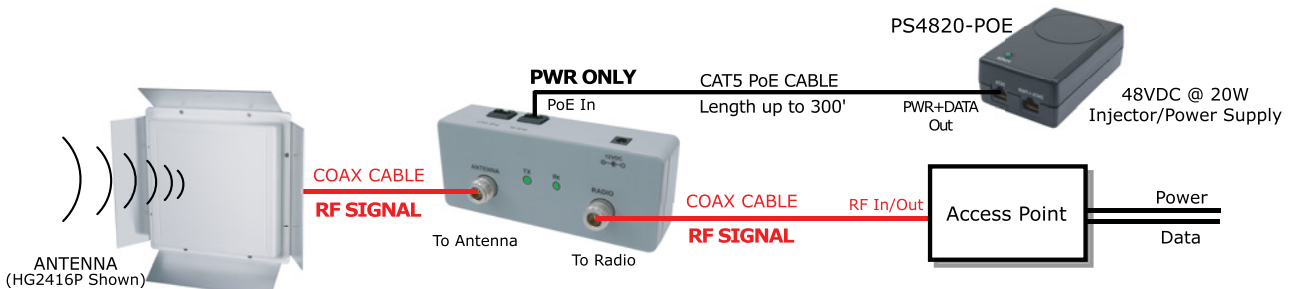
Here are some examples of methods to power PoE RF Amplifiers

Typical PoE Amplifier Applications



Powering the Amplifier and Access Point using a Single PoE Ethernet Cable

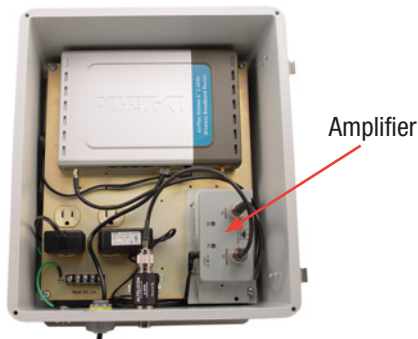
This application uses the amplifier's PoE pass-through feature.



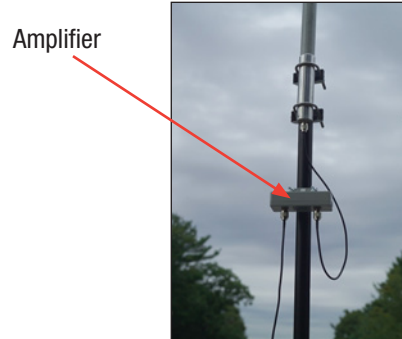
Powering the Amplifier using it's own Dedicated 48V PoE Line

WLAN Amplifier Mounting

For outdoor installations there are several standard methods for mounting RF Amplifiers



Typical enclosure mounting of an WLAN Amplifier



Typical Outdoor Mast Mounting of an WLAN Amplifier



Informative e-mail newsletters

Our newsletters are packed with tips, tutorials, product info and downloads! L-com.com/NewsletterSignUp