



HG913Y-NF

### HyperLink Brand Yagi Antennas - Offer Precise, Directional Wireless Connectivity

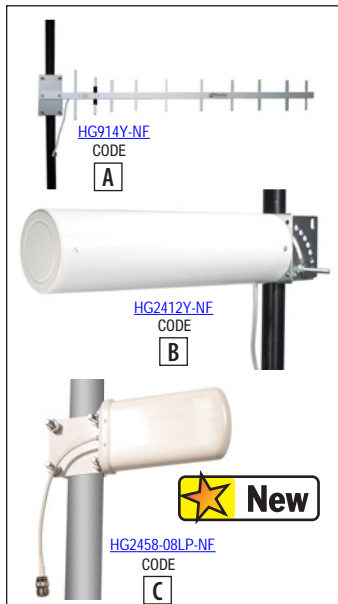
Antennas are the most important element of a wireless link. If the wrong antenna is chosen, the link will not work. Antennas come in all shapes and sizes. They can look quite different from each other yet they can have similar performance and radiation patterns. In many cases the choice of Antenna (photo on right) type is based on personal preference or aesthetics in addition to performance and cost. Learn more at [www.L-com.com](http://www.L-com.com).



HG2412Y-NF

#### HyperLink Antennas in use

Application: (photo on the left) Here the HG913Y-NF is being used in an industrial waste water treatment substation application. This HyperLink Brand Yagi antenna communicates back to a central location where treatment process data is collected and analyzed.



Item #	Code	Description	1-9	10-24	25-99	100-249	250-499
--------	------	-------------	-----	-------	-------	---------	---------

#### 900 MHz, 1.9 GHz, 2.4 GHz and 5.8 GHz Yagi Antennas - Designed for Long Range Directional Operation

These rugged outdoor rated directional Yagi antennas are ideally suited for IEEE 802.11b/g/n, PCS and 900 MHz ISM applications. HyperLink offers both radome enclosed models as well as non-radome enclosed Yagi antennas. A multitude of gain and connector options are available. For a complete listing of HyperLink Brand Yagi antennas visit [www.L-com.com](http://www.L-com.com).

- 2.4 GHz ISM band
- 2.4 GHz IEEE 802.11b/g/n wireless LAN applications
- All weather operation
- 1.9 GHz for PCS
- Wi-Fi
- Wireless video systems
- RoHS compliant

#### ✓RoHS 900 MHz Yagi Antennas

<a href="#">HG909Y-NF</a>	A	9dBi, Stainless Steel, 18in Pigtail with NF Connector	31.99	30.71	29.43	27.19	23.99
<a href="#">HG909Y-NM</a>	A	9dBi, Stainless Steel, 18in Pigtail with NM Connector	45.99	44.15	42.31	39.09	34.49
<a href="#">HG913Y-NF</a>	A	13dBi, Stainless Steel, 18in Pigtail with NF Connector	45.99	44.15	42.31	39.09	34.49
<a href="#">HG913Y-NM</a>	A	13dBi, Stainless Steel, 18in Pigtail with NM Connector	59.99	57.59	55.19	50.99	44.99
<a href="#">HG914Y-NF</a>	A	14dBi, Aluminum, 12in Pigtail with NF Connector	119.99	115.19	110.39	101.99	89.99
<a href="#">HG914Y-NM</a>	A	14dBi, Aluminum, 12in Pigtail with NM Connector	129.99	124.79	119.59	110.49	97.49

#### 1.9 GHz Yagi Antenna

<a href="#">HG1912SY-NF</a>	A	12dBi, Stainless Steel, 7in Pigtail with NF Connector	44.99	41.39	37.79	34.19	30.59
-----------------------------	---	---	-------	-------	-------	-------	-------

#### ✓RoHS 2.4 GHz Yagi Antennas

<a href="#">HG2409Y-NF</a>	B	9dBi, Radome Enclosed, 12in Pigtail with NF Connector	39.99	35.99	31.99	27.99	23.99
<a href="#">HG2409Y-NM</a>	B	9dBi, Radome Enclosed, 12in Pigtail with NM Connector	49.99	44.99	39.99	34.99	29.99
<a href="#">HG2412SY-NF</a>	A	12dBi, Stainless Steel, 7in Pigtail with NF Connector	44.99	41.39	37.79	34.19	30.59
<a href="#">HG2412Y-NF</a>	B	12dBi, Radome Enclosed, 12in Pigtail with NF Connector	44.99	40.49	35.99	31.49	26.99
<a href="#">HG2412Y-NM</a>	B	12dBi, Radome Enclosed, 12in Pigtail with NM Connector	54.99	49.49	43.99	38.49	32.99
<a href="#">HG2415Y-NF</a>	B	14.5dBi, Radome Enclosed, 12in Pigtail with NF Connector	44.99	41.39	37.79	34.19	30.59
<a href="#">HG2415Y-NM</a>	B	14.5dBi, Radome Enclosed, 12in Pigtail with NM Connector	44.99	41.39	37.79	34.19	30.59

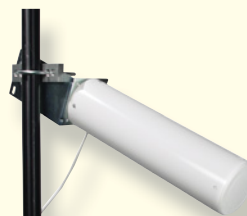
#### ✓RoHS 2.4/5.8 GHz Log Periodic Antennas

<a href="#">HG2458-08LP-NF</a>	C	8dBi, Radome Enclosed, 9in Pigtail with NF Connector	64.99	58.49	51.99	45.49	38.99
--------------------------------	---	--	-------	-------	-------	-------	-------

### Did you know...

Named after its Japanese inventor, Yagi antennas are narrow band directional type antennas which consist of a boom supporting a series of metallic elements or rods. Because of their narrow beam widths they are ideally suited for directional and multipoint applications. L-com offers both traditional style Yagi antennas as well as our radome enclosed models.

YAGI antenna mounting options (please review the various options on the web site) provide stable, secure mounting in all types of environmental conditions. This is critical to keeping these directional antennas "locked" on target to their respective system antenna points.



Mounting: The HG2415Y-NF antenna is supplied with a 60 degree tilt-and-swivel mast mount kit. An optional wall/ceiling mount kit is available.

Mounting: Tilt-and-Swivel Mount HG2412SY-NF and HG1912SY-NF. This mount provides 0-20 degree up or down tilt in 10 degree increments.

