

Item #	Code	Description	1-9	10-24	25-99	100-249	250-499
--------	------	-------------	-----	-------	-------	---------	---------

HyperLink Brand Omni Directional Antennas - Versatile Mounting Options and All-Weather Design

L-com offers a wide range of Wi-Fi Omnidirectional antennas for multipoint applications where very wide coverage is desired. Designed to operate in the harshest of environments, L-com's Omni antennas far exceed other Omnidirectional antennas. Multiple applications are supported including IEEE 802.11 a/b/g/n wireless LAN systems, 900 MHz ISM, Wi-Fi and WiMAX.

Our Omnidirectional antennas are designed for superior performance, versatility and all-weather operation. Some of the features found in our omni antennas include vented end caps and drain holes in the base to help prevent moisture build-up inside the antenna, sealed collinear brass elements and heavy duty mounting systems. We even have a model designed for use in marine applications.

- Multipoint applications
- Public wireless hotspots
- All weather operation
- Wi-Fi and WiMAX
- Vented end caps
- RoHS compliant

✓RoHS 900 MHz Omnidirectional Antennas

HGV-906U	A	6dBi, Integral NF Connector	54.99	52.79	50.59	46.74	41.24
HG908U-PRO	A	8dBi, Integral NF Connector	124.99	112.49	99.99	87.49	74.99

✓RoHS 1.9 GHz Omnidirectional Antennas

HG1911U-PRO	A	11dBi, Integral NF Connector	99.99	96.99	93.99	90.99	87.99
HG1911U-PRO-5PK	A	11dBi, Integral NF Connector, 5-Pack	449.99	422.99	395.99	368.99	341.99

✓RoHS 2.4 GHz Omnidirectional Antennas

HGV-2404U	D	4dBi, Integral NF Connector	37.99	34.95	31.91	28.87	25.83
HGV-2406U	D	6dBi, Integral NF Connector	39.99	36.79	33.59	30.39	27.19
HGV-2409U	D	8.5dBi, Integral NF Connector	49.99	47.99	45.99	42.49	37.49
HG2408U-NF	B	8dBi, 12in Pigtail with NF Connector	62.99	59.84	56.69	53.54	CALL
HG2408U-NM	B	8dBi, 12in Pigtail with NM Connector	69.99	66.49	62.99	59.49	CALL
HG2408U-RBP	B	8dBi, 12in Pigtail with RP-BNC Connector	69.99	66.49	62.99	59.49	CALL
HG2408U-RSP	B	8dBi, 12in Pigtail with RP-SMA Connector	69.99	66.49	62.99	59.49	CALL
HG2408U-RTP	B	8dBi, 12in Pigtail with RP-TNC Connector	69.99	66.49	62.99	59.49	CALL
HG2408U-PRO	A	8dBi, Integral NF Connector	64.99	64.34	63.69	63.04	CALL
HG2408U-PRO-5PK	A	8dBi, Integral NF Connector, 5-Pack	299.99	287.99	275.99	254.99	224.99
HG2409U	D	8.5dBi, Integral NM Connector	49.99	45.99	41.99	37.99	33.99
HG2409UM-RSP	D	8.5dBi, Marine, 3ft Pigtail with RP-SMA Connector	109.99	98.99	87.99	76.99	65.99
HG2409UDT-PRO	A	9dBi, 7 Degree Down-Tilt, Integral NF Connector	71.99	68.39	64.79	61.19	CALL
HGV-2410U	C	10dBi, Integral NF Connector	59.99	57.59	55.19	50.99	44.99
HG2412U-NF	C	12dBi, 12in Pigtail with NF Connector	59.99	56.99	53.99	50.99	CALL
HG2412U-NM	C	12dBi, 12in Pigtail with NM Connector	69.99	66.49	62.99	59.49	CALL
HG2412U-RTP	C	12dBi, 12in Pigtail with RP-TNC Connector	69.99	66.49	62.99	59.49	CALL
HG2415U-PRO	A	15dBi, Integral NF Connector	114.99	113.84	112.69	111.54	CALL
HG2415U-PRO-5PK	A	15dBi, Integral NF Connector, 5-Pack	499.99	459.99	419.99	379.99	339.99

✓RoHS 2.6 GHz Omnidirectional Antennas

HG2609U	D	8.5dBi, Integral NM Connector	59.99	55.19	50.39	45.59	40.79
-------------------------	---	-------------------------------	-------	-------	-------	-------	-------

✓RoHS 3.5 GHz Omnidirectional Antennas

HG3511U-PRO	B	11dBi, Integral NF Connector	74.99	72.74	70.49	68.24	65.99
HG3511U-PRO-5PK	B	11dBi, Integral NF Connector, 5-Pack	375.00	360.00	345.00	318.75	281.25

✓RoHS 5.3/5.8 GHz Omnidirectional Antennas

HGS310U	C	5.3 GHz, 10dBi, Integral NF Connector	69.99	67.19	64.39	59.49	52.49
HGS412U	C	5.4 GHz, 12dBi, Integral NF Connector	79.99	76.79	73.59	67.99	59.99
HGS808U	C	5.8 GHz, 8dBi, Integral NF Connector	79.99	71.99	63.99	55.99	47.99
HGS812U-PRO	A	5.8 GHz, 12dBi, Integral NF Connector	89.99	86.39	82.79	79.19	75.59
HGS812U-PRO-5PK	A	5.8 GHz, 12dBi, Integral NF Connector, 5-Pack	439.99	395.99	351.99	307.99	263.99

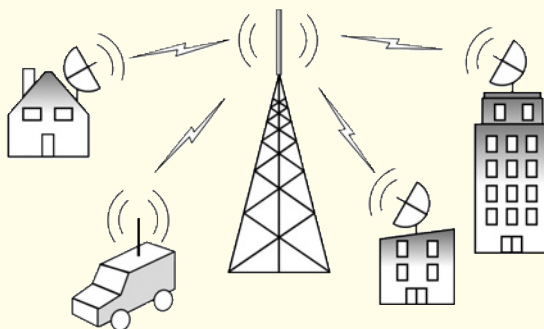


Point-to-Multipoint Application

L-com's HyperLink Brand Omni antennas provide wide, 360° coverage over large areas. These antennas provide connectivity to a varied mix of receiver/transmit antennas (or points) mounted in proximity or range of the base Omni antenna installation.

These multipoint antennas are typically focused or pointed to the base Omni antenna to complete the signal links. Mobile applications typically use Omni antennas to receive/send by establishing a link to the signal source antenna (the base Omni in this example).

In early 2009 L-com introduced a new 20° down tilt Omni antenna to improve coverage by moving the energy into a down looking pattern, improving overall connectivity for the system users.



Same day shipping

Orders placed before 4:00 EST ship the same day.