

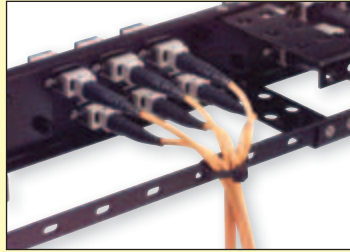
Item #	Description	List Price			
Single, Two, Three or Four Panel DIN Rail Termination Enclosure - For Easy Cable Mounting at the Workplace					
Use this simple enclosure for terminating fiber cabling within industrial workplaces or anyplace that needs a small cable drop. The unit mounts to 35mm DIN Rail allowing cable entry from the top. The DIN connector is also removable for mounting to walls, etc. FSP Series Sub-Panels mount to the front of the enclosure for quick and easy cable termination. Built from .060 inch (16 ga) Cold Rolled Steel. Color: black.					
FSP-1DIN	DIN Rail/Wall Mount Termination Enclosure for 1 FSP Series Sub-Panel				57.98
FSP-2DIN	DIN Rail/Wall Mount Termination Enclosure for 2 FSP Series Sub-Panels				64.98
FSP-3DIN	DIN Rail/Wall Mount Termination Enclosure for 3 FSP Series Sub-Panels				71.98
FSP-4DIN	DIN Rail/Wall Mount Termination Enclosure for 4 FSP Series Sub-Panels				78.98

Item #	Description	1-9	10-24	25-99	100-249
✓RoHS 19" (48.3cm) Rack Panels Accept 3, 6 or 12 FSP Series Sub-Panels					
This series of 19" (48.3cm) rack panels accepts any of our FSP Series Sub-Panels. They snap into place using push button rivets which allow for easy installation or removal of the sub-panels. Built from .060 inch (16 ga) cold rolled steel, these panels are rugged and economically priced. Rear cable management option is available as an accessory. Color: black.					
PR175-FSP-3	1.75" (1U) (4.4cm) Rack Panel for 3 FSP Series Sub-Panels	39.95	36.75	33.56	30.36
PR35-FSP-6	3.50" (2U) (8.9cm) Rack Panel for 6 FSP Series Sub-Panels	49.95	45.95	41.96	37.96
PR525-FSP-12	5.25" (3U) (13.3cm) Rack Panel for 12 FSP Series Sub-Panels	59.95	55.15	50.36	45.56
PR-CMB	Cable Management Bracket Kit for 19" (48.3cm) Panels	24.95	24.45	23.95	23.45
	One 19" (48.3cm) Crossbar, 6 Management Brackets, 18 Flathead Screws)				

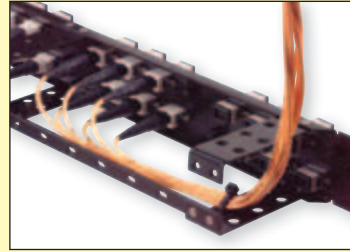


The PR-CMB cable management kit is designed for maximum flexibility.

A unique extension and crossbar design permits side and rear cable routing. All surfaces are perforated for ample cable tie points.



Rear Crossbar: Useful for reducing connector stress from hanging cable lengths.



Management Brackets: Enable cable routing and provide ample tie-down points.

✓RoHS Sub-Panels used to Populate FSP Series Patch Panels, FE & FSP DIN Rail Mount Enclosures

These versatile sub-panels are used to populate L-com's FE Series Wall Mount & Rack Mount Fiber Enclosures, FSP Series Rack Panels and FSP DIN-Rail Mount Enclosures. Offered in a variety of connector types in Simplex, Duplex and Quad configurations. Ceramic sleeve versions are primarily used in single mode applications while multimode applications typically utilize the bronze sleeve configuration. These units feature a black finish with snap on mounting for easy installation and removal.

FSP-BNK	Blank Sub-Panel	11.98	11.50	11.02	10.54
FSP-SCMTLC-BNK	Blank Sub-Panel with 6 SC Simplex/MT-RJ/LC Duplex Openings	11.98	11.50	11.02	10.54
FSP-MTRJ	Fiber Sub-Panel, 6 MT-RJ Couplers	35.98	33.10	30.22	27.34
FSP-SC-APC	Fiber Sub-Panel, 6 APC SC Simplex Couplers, Ceramic Sleeve	71.98	66.22	60.46	54.70
FSP-LCD6-BR	Fiber Sub-Panel, 6 LC Duplex Couplers, Bronze Sleeve	39.98	36.78	33.58	30.38
FSP-LCD6-CR	Fiber Sub-Panel, 6 LC Duplex Couplers, Ceramic Sleeve	51.98	47.82	43.66	39.50
FSP-SC-BR	Fiber Sub-Panel, 6 SC Simplex Couplers, Bronze Sleeve	35.98	33.10	30.22	27.34
FSP-SC-CR	Fiber Sub-Panel, 6 SC Simplex Couplers, Ceramic Sleeve	44.98	41.38	37.78	34.18
FSP-STFC-BNK	Blank Sub-Panel with 6 ST/FC Simplex Openings	11.98	11.50	11.02	10.54
FSP-FC-APC	Fiber Sub-Panel, 6 APC FC Simplex Couplers, Ceramic Sleeve	101.98	93.82	85.66	77.50
FSP-FC-BR	Fiber Sub-Panel, 6 FC Couplers, Bronze Sleeve	53.98	49.66	45.34	41.02
FSP-FC-CR	Fiber Sub-Panel, 6 FC Couplers, Ceramic Sleeve	68.98	63.46	57.94	52.42
FSP-ST-BR	Fiber Sub-Panel, 6 ST Couplers, Bronze Sleeve	32.98	30.34	27.70	25.06
FSP-ST-CR	Fiber Sub-Panel, 6 ST Couplers, Ceramic Sleeve	47.98	44.14	40.30	36.46
FSP-SCDLCQ6-BNK	Blank Sub-Panel with 6 SC Duplex/LC Quad Openings	14.98	14.38	13.78	13.18
FSP-LCQ6-BR	Fiber Sub-Panel, 6 LC Quad Couplers, Bronze Sleeve	110.68	101.83	92.97	84.12
FSP-LCQ6-CR	Fiber Sub-Panel, 6 LC Quad Couplers, Ceramic Sleeve	134.68	123.91	113.13	102.36
FSP-SCD6-APC	Fiber Sub-Panel, 6 SC Duplex Couplers, Ceramic Sleeve	125.98	115.90	105.82	95.74
FSP-SCD6-BR	Fiber Sub-Panel, 6 SC Duplex Couplers, Bronze Sleeve	47.98	44.14	40.30	36.46
FSP-SCD6-CR	Fiber Sub-Panel, 6 SC Duplex Couplers, Ceramic Sleeve	62.98	57.94	52.90	47.86

✓RoHS Fiber Sub-Panel with 6 LC Keyed Multimode Couplers

These sub-panels are used to populate L-com's FE Series Wall Mount & Rack Mount Fiber Enclosures, FSP Series Rack Panels and FSP DIN-Rail Mount Enclosures. Secured, keyed, LC adapters are designed specifically for mission critical circuits where networks are segregated by color for identification and protected from accidental moves, adds, or changes. They offer mechanical network security for organizations desiring to segregate networks because of privacy or security concerns. Note: The couplers in these sub-panels are designed to only work with L-com's Keyed LC Patch Cords.

FSP-LCK-MM-PNK	Fiber Panel, 6 LC Keyed Multimode, Pink	99.98	95.98	91.98	87.98
FSP-LCK-MM-WHT	Fiber Panel, 6 LC Keyed Multimode, White	99.98	95.98	91.98	87.98
FSP-LCK-MM-YLW	Fiber Panel, 6 LC Keyed Multimode, Yellow	99.98	95.98	91.98	87.98
FSP-LCK-MM-RED	Fiber Panel, 6 LC Keyed Multimode, Red	99.98	95.98	91.98	87.98
FSP-LCK-MM-ORG	Fiber Panel, 6 LC Keyed Multimode, Orange	99.98	95.98	91.98	87.98
FSP-LCK-MM-VLT	Fiber Panel, 6 LC Keyed Multimode, Violet	99.98	95.98	91.98	87.98
FSP-LCK-MM-GRY	Fiber Panel, 6 LC Keyed Multimode, Gray	99.98	95.98	91.98	87.98
FSP-LCK-MM-CBT	Fiber Panel, 6 LC Keyed Multimode, Cobalt	99.98	95.98	91.98	87.98
FSP-LCK-MM-BRN	Fiber Panel, 6 LC Keyed Multimode, Brown	99.98	95.98	91.98	87.98
FSP-LCK-MM-TRQ	Fiber Panel, 6 LC Keyed Multimode, Turquoise	99.98	95.98	91.98	87.98
FSP-LCK-MM-MAG	Fiber Panel, 6 LC Keyed Multimode, Magenta	99.98	95.98	91.98	87.98
FSP-LCK-MM-OLV	Fiber Panel, 6 LC Keyed Multimode, Olive	99.98	95.98	91.98	87.98

Item #	Description	List Price
--------	-------------	------------

✓RoHS Plunger and Grommet Kit for FSP Series Sub-Panels - Pkg/50

FSP-FASTENERS	Plunger and Grommet Kit for FSP Series Sub-Panels, Pkg/50	24.98
---------------	---	-------



"While visiting a client recently, I found your catalog on the shelf and read through it. I was impressed by the products offered and will suggest that referenced clients consider your offerings when network hardware is required. Thank you." - Vincent A.