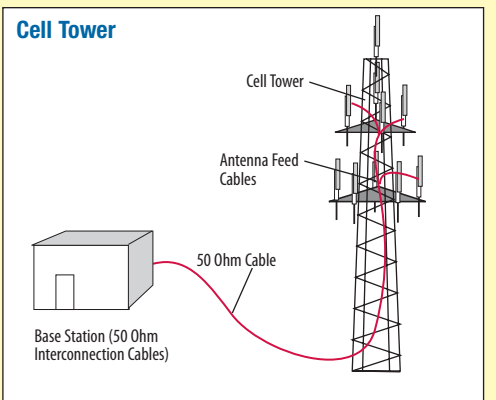
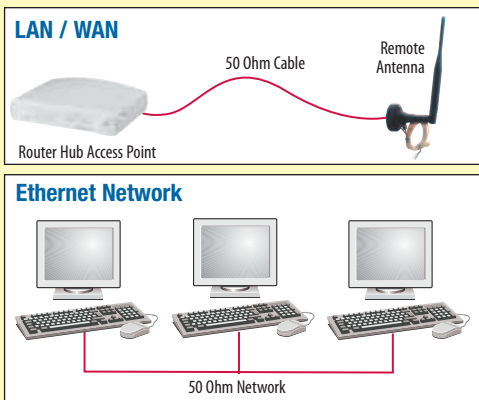




When is 50 Ohm coaxial cable used?

The primary use of a 50 Ohm coaxial cable is transmission of a data signal in a two-way communication system. Some common applications for 50 Ohm coaxial cable are computer Ethernet backbones, wireless antenna feed cables, GPS (Global Positioning Satellite) antenna feed cables and cell phone systems. The cable assemblies offered in this section cover the most common RG style cables and connector interfaces that are used in these applications.



Did you know...

50 Ohm coaxial cables are used primarily with RF antennas and in older Ethernet networks?

Item #	Description	1-9	10-24	25-99	100-249	250-499
--------	-------------	-----	-------	-------	---------	---------

RG174/U - 50 Ohm Coaxial Cables with SMA and BNC Connectors and Molded Strain Relief Boots

L-com now offers 50 Ohm, SMA RG174/U coaxial cable assemblies with rugged molded strain relief boots that protect against severe cable bends at the cable/connector egress point. This new L-com exclusive RG174/U molded boot design is a hard to find feature that most coaxial cable manufacturers do not offer. Additionally, L-com stocks 10 standard lengths from .5 (0.15m) to 10ft (3.0m) ready for immediate delivery.

RG174/U	Description	NOMINAL ATTENUATION		
		MHz	db/100ft	db/100m
• Center Conductor: 26 (7x34) AWG bare copper covered steel		50	5.8	19.0
• Shielding: Tinned copper braid (90% coverage)		100	8.4	27.6
• Insulation: Polyethylene		200	12.5	41.0
• Jacket: Black PVC		400	19.0	62.3
• Operating Temperature: -40°C - +75°C		1000	34.0	111.5

RG174/U - 50 Ohm Coaxial Cables with Two Inline SMA Plugs and Molded Strain Relief Boots

CC174S-05	RG174 Cable, SMA Male / Male, 0.5ft (0.15m)	18.00	16.92	15.84	14.76	13.68
CC174S-1	RG174 Cable, SMA Male / Male, 1.0ft (0.3m)	18.15	17.06	15.97	14.88	13.79
CC174S-1.5	RG174 Cable, SMA Male / Male, 1.5ft (0.45m)	18.30	17.20	16.10	15.01	13.91
CC174S-2	RG174 Cable, SMA Male / Male, 2.0ft (0.6m)	18.45	17.34	16.24	15.13	14.02
CC174S-2.5	RG174 Cable, SMA Male / Male, 2.5ft (0.75m)	18.60	17.48	16.37	15.25	14.14
CC174S-3	RG174 Cable, SMA Male / Male, 3.0ft (0.9m)	18.75	17.63	16.50	15.38	14.25
CC174S-4	RG174 Cable, SMA Male / Male, 4.0ft (1.2m)	19.05	17.91	16.76	15.62	14.48
CC174S-5	RG174 Cable, SMA Male / Male, 5.0ft (1.5m)	19.35	18.19	17.03	15.87	14.71
CC174S-7.5	RG174 Cable, SMA Male / Male, 7.5ft (2.3m)	20.10	18.89	17.69	16.48	15.28
CC174S-10	RG174 Cable, SMA Male / Male, 10.0ft (3.0m)	20.85	19.60	18.35	17.10	15.85

RG174/U - 50 Ohm Coaxial Cables with Inline SMA to Right Angle SMA Plugs & Molded Strain Relief Boots

CC174S-05HR	RG174 Cable, SMA Male / 90° Male, 0.5ft (0.15m)	21.50	20.21	18.92	17.63	16.34
CC174S-1HR	RG174 Cable, SMA Male / 90° Male, 1.0ft (0.3m)	21.65	20.35	19.05	17.75	16.45
CC174S-1.5HR	RG174 Cable, SMA Male / 90° Male, 1.5ft (0.45m)	21.80	20.49	19.18	17.88	16.57
CC174S-2.5HR	RG174 Cable, SMA Male / 90° Male, 2.5ft (0.75m)	22.10	20.77	19.45	18.12	16.80
CC174S-5HR	RG174 Cable, SMA Male / 90° Male, 5.0ft (1.5m)	22.85	21.48	20.11	18.74	17.37

RG174/U - 50 Ohm Coaxial Cables with Two Right Angle SMA Plugs and Molded Strain Relief Boots

CC174S-05HR2	RG174 Cable, SMA 90° Male / 90° Male, 0.5ft (0.15m)	26.00	24.44	22.88	21.32	19.76
CC174S-1HR2	RG174 Cable, SMA 90° Male / 90° Male, 1.0ft (0.3m)	26.15	24.58	23.01	21.44	19.87
CC174S-1.5HR2	RG174 Cable, SMA 90° Male / 90° Male, 1.5ft (0.45m)	26.30	24.72	23.14	21.57	19.99
CC174S-2.5HR2	RG174 Cable, SMA 90° Male / 90° Male, 2.5ft (0.75m)	26.60	25.00	23.41	21.81	20.22
CC174S-5HR2	RG174 Cable, SMA 90° Male / 90° Male, 5.0ft (1.5m)	27.35	25.71	24.07	22.43	20.79

RG174/U - 50 Ohm Coaxial Cables with Inline SMA to Inline BNC Plugs and Molded Strain Relief Boots

CC174SB-05	RG174 Cable, SMA Male / BNC Male, 0.5ft (0.15m)	14.00	13.16	12.32	11.48	10.64
CC174SB-1	RG174 Cable, SMA Male / BNC Male, 1.0ft (0.3m)	14.15	13.30	12.45	11.60	10.75
CC174SB-1.5	RG174 Cable, SMA Male / BNC Male, 1.5ft (0.45m)	14.30	13.44	12.58	11.73	10.87
CC174SB-2.5	RG174 Cable, SMA Male / BNC Male, 2.5ft (0.75m)	14.60	13.72	12.85	11.97	11.10
CC174SB-5	RG174 Cable, SMA Male / BNC Male, 5.0ft (1.5m)	15.35	14.43	13.51	12.59	11.67
CC174SB-7.5	RG174 Cable, SMA Male / BNC Male, 7.5ft (2.3m)	16.10	15.13	14.17	13.20	12.24
CC174SB-10	RG174 Cable, SMA Male / BNC Male, 10.0ft (3.0m)	16.85	15.84	14.83	13.82	12.81

RG174/U - 50 Ohm Coaxial Cables with Two Inline BNC Plugs and Molded Strain Relief Boots

CC174-1	RG174 Cable, BNC Male / Male, 1.0ft (0.3m)	7.00	6.58	6.16	5.74	5.32
CC174-1.5	RG174 Cable, BNC Male / Male, 1.5ft (0.45m)	7.15	6.72	6.29	5.86	5.43
CC174-2	RG174 Cable, BNC Male / Male, 2.0ft (0.6m)	7.30	6.86	6.42	5.99	5.55
CC174-2.5	RG174 Cable, BNC Male / Male, 2.5ft (0.75m)	7.45	7.00	6.56	6.11	5.66
CC174-3	RG174 Cable, BNC Male / Male, 3.0ft (0.9m)	7.60	7.14	6.69	6.23	5.78
CC174-4	RG174 Cable, BNC Male / Male, 4.0ft (1.2m)	7.90	7.43	6.95	6.48	6.00
CC174-5	RG174 Cable, BNC Male / Male, 5.0ft (1.5m)	8.20	7.71	7.22	6.72	6.23
CC174-7.5	RG174 Cable, BNC Male / Male, 7.5ft (2.3m)	8.95	8.41	7.88	7.34	6.80
CC174-10	RG174 Cable, BNC Male / Male, 10.0ft (3.0m)	9.70	9.12	8.54	7.95	7.37
CC174-12	RG174 Cable, BNC Male / Male, 12.0ft (3.7m)	10.30	9.68	9.06	8.45	7.83
CC174-15	RG174 Cable, BNC Male / Male, 15.0ft (4.6m)	11.20	10.53	9.86	9.18	8.51
CC174-25	RG174 Cable, BNC Male / Male, 25.0ft (7.6m)	14.20	13.35	12.50	11.64	10.79



RoHS status information
listed on every product saves you time. L-com.com/RoHS