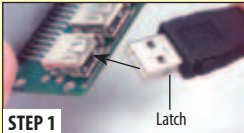
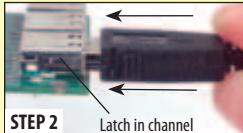


Tip How does the latching USB connector work?



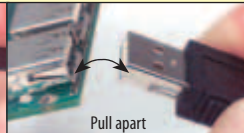
STEP 1 Insert the latching USB connector into the USB jack.



STEP 2 The latches on each side of the connector lock into the channel cut-outs of any USB jack. **Note:** It may be necessary to rock the latching connector slightly to set the latches into the channels.



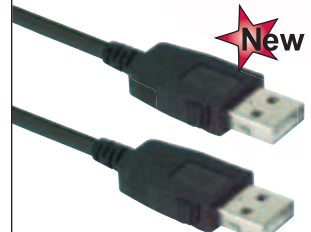
STEP 3 To remove the latching USB connector, simply depress the release mechanisms on the sides of the backshell and pull apart.



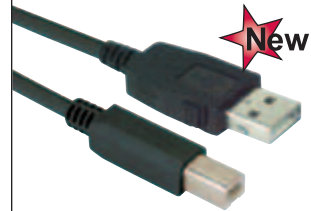
CAUALB



CAUALAL



CAUZALAL-M



CAUZALB-M

Item #	Description	Color	1-9	10-24	25-99	100-249	250-499
--------	-------------	-------	-----	-------	-------	---------	---------

USB Cable Assemblies with Latching Connectors

These unique cable assemblies feature a latching Type A USB plug which provides lock down mating retention with any USB Type A jack. Two styles are available – latching A to latching A and latching A to standard B. Fully shielded and USB 2.0 compliant, this cable contains two 24 AWG power conductors and one 28 AWG pair for the data lines. Color is black. Please note latching Type B plugs are available as custom products but require a custom Type B jack.

RoHS USB Cable Assemblies with Latching Type A / Standard Type B Connectors

CAUALB-05M	USB Cable Assembly, Latching A / Standard B	Black	10.20	9.38	8.57	7.75	6.94
CAUALB-1M	USB Cable Assembly, Latching A / Standard B	Black	10.65	9.80	8.95	8.09	7.24
CAUALB-2M	USB Cable Assembly, Latching A / Standard B	Black	11.55	10.63	9.70	8.78	7.85
CAUALB-3M	USB Cable Assembly, Latching A / Standard B	Black	12.45	11.45	10.46	9.46	8.47
CAUALB-4M	USB Cable Assembly, Latching A / Standard B	Black	13.35	12.28	11.21	10.15	9.08
CAUALB-5M	USB Cable Assembly, Latching A / Standard B	Black	14.25	13.11	11.97	10.83	9.69

RoHS USB Cable Assemblies with Latching Type A Connectors

CAUALAL-05M	USB Cable Assembly, Latching A / Latching A	Black	11.70	10.76	9.83	8.89	7.96
CAUALAL-1M	USB Cable Assembly, Latching A / Latching A	Black	12.15	11.18	10.21	9.23	8.26
CAUALAL-2M	USB Cable Assembly, Latching A / Latching A	Black	13.05	12.01	10.96	9.92	8.87
CAUALAL-3M	USB Cable Assembly, Latching A / Latching A	Black	13.95	12.83	11.72	10.60	9.49
CAUALAL-4M	USB Cable Assembly, Latching A / Latching A	Black	14.85	13.66	12.47	11.29	10.10
CAUALAL-5M	USB Cable Assembly, Latching A / Latching A	Black	15.75	14.49	13.23	11.97	10.71

RoHS LSZH USB 2.0 Cables, Latching Type A / Latching Type A

These Low Smoke Zero Halogen cable assemblies feature two latching Type A USB plugs which provide lock down mating retention with any USB Type A jack. Fully shielded and USB 2.0 compliant, these cables contain two 24 AWG power conductors and one 28 AWG pair for the data lines.

CAUZALAL-05M	LSZH USB Latching Type A - Latching Type A Cable, 0.5m	Black	14.00	13.16	12.32	11.48	10.64
CAUZALAL-1M	LSZH USB Latching Type A - Latching Type A Cable, 1.0m	Black	15.25	14.33	13.42	12.51	11.59
CAUZALAL-2M	LSZH USB Latching Type A - Latching Type A Cable, 2.0m	Black	17.75	16.68	15.62	14.56	13.49
CAUZALAL-3M	LSZH USB Latching Type A - Latching Type A Cable, 3.0m	Black	20.25	19.04	17.82	16.61	15.39
CAUZALAL-4M	LSZH USB Latching Type A - Latching Type A Cable, 4.0m	Black	22.75	21.38	20.02	18.66	17.29
CAUZALAL-5M	LSZH USB Latching Type A - Latching Type A Cable, 5.0m	Black	25.25	23.73	22.22	20.71	19.19

RoHS LSZH USB 2.0 Cables, Latching Type A / Standard Type B

CAUZALB-05M	LSZH USB Latching Type A - Latching Type B Cable, 0.5m	Black	12.50	11.75	11.00	10.25	9.50
CAUZALB-1M	LSZH USB Latching Type A - Latching Type B Cable, 1.0m	Black	13.75	12.92	12.10	11.28	10.45
CAUZALB-2M	LSZH USB Latching Type A - Latching Type B Cable, 2.0m	Black	16.25	15.27	14.30	13.33	12.35
CAUZALB-3M	LSZH USB Latching Type A - Latching Type B Cable, 3.0m	Black	18.75	17.63	16.50	15.38	14.25
CAUZALB-4M	LSZH USB Latching Type A - Latching Type B Cable, 4.0m	Black	21.25	19.97	18.70	17.43	16.15
CAUZALB-5M	LSZH USB Latching Type A - Latching Type B Cable, 5.0m	Black	23.75	22.32	20.90	19.48	18.05

RoHS Mountable USB Extension Cable - Type A Connectors, 30 Microinches Gold

Tired of trying to connect your USB cable to the hard to access port on the back of your PC? Try this convenient cable and make this problem go away! Featuring a USB Type A plug for the PC connection and a unique USB Type A jack, the user can mount this jack to any surface with either screws or double sided foam tape (both are provided). Fully shielded and USB 2.0 compliant, this cable contains two 20 AWG power conductors plus one 28 AWG twisted pair for the data lines and rugged molded backshells. Cable length is 2 meters (6.6 feet).

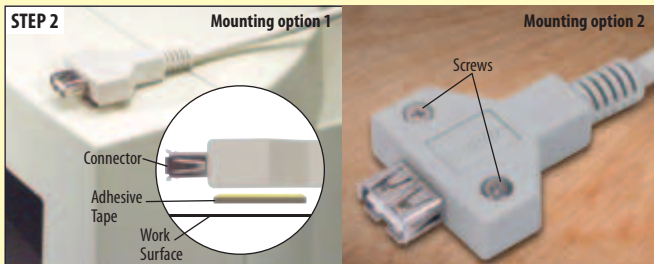
CSMUAXMT-2M	Premium USB Type A Male / Female Mounting Extension Cable, 2.0m	Lt. Gray	10.50	9.66	8.82	7.98	7.14
-------------	---	----------	-------	------	------	------	------

Tip Advantage of using the USB mountable extension cable assembly

Connecting a cable to the hard to access USB port on your PC can be difficult.



STEP 1 Simply connect the mountable extension cable once to the USB port on the back of your computer.



STEP 2 This cable can be mounted to your PC monitor or any work surface. Choose your preferred mounting option using either the double sided adhesive tape or screws provided. Your USB port is now easy to access.

- Suggested Uses:
- Digital Cameras
 - MP3 Players
 - External Hard Drives
 - Test Environments



CSMUAXMT-2M

To see our entire product offering go to...L-com.com