

Item #	Description	1-9	10-24	25-99	100-249	250-499
<b>✓RoHS</b>	<b>Crimp &amp; Poke Contacts - Choose Pins or Sockets, Flash or 30µ</b>					
CPM10	Crimp & Poke Male Pins - Gold Flash, Pkg/10	2.50	2.30	2.10	1.90	1.70
CPM100	Crimp & Poke Male Pins - Gold Flash, Reel/100	15.00	13.80	12.60	11.40	10.20
CPM10-30U	Crimp & Poke Male Pins - 30µ Gold, Pkg/10	3.25	2.99	2.73	2.47	2.21
CPM100-30U	Crimp & Poke Male Pins - 30µ Gold, Reel/100	19.50	17.94	16.38	14.82	13.26
CPF10	Crimp & Poke Female Sockets - Gold Flash, Pkg/10	3.00	2.76	2.52	2.28	2.04
CPF100	Crimp & Poke Female Sockets - Gold Flash, Reel/100	18.00	16.56	15.12	13.68	12.24
CPF10-30U	Crimp & Poke Female Sockets - 30µ Gold, Pkg/10	3.75	3.45	3.15	2.85	2.55
CPF100-30U	Crimp & Poke Female Sockets - 30µ Gold, Reel/100	22.50	20.70	18.90	17.10	15.30

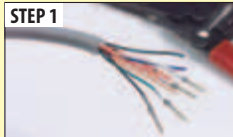
**✓RoHS Insertion/Extraction Tools for Crimp & Poke Type Contacts - Professional and Economy Versions**

Two insertion/extraction tools are available for inserting contacts into D-Subs. Professional model is made for multiple insertions and is built on a larger, more ergonomic tool body. The economy version is also available when limited insertions are necessary.

TDT	Economy Contact Insertion/Extraction Tool	2.95	2.71	2.48	2.24	CALL
TDTPRO	Professional Contact Insertion/Extraction Tool	19.95	19.15	18.35	17.56	CALL



**Tip How to crimp D-Sub contacts using hand tool CP3127CT**



**STEP 1**  
Strip the wire to 3/32" (0.2cm). You can use part #HTC2030.



**STEP 2**  
Squeeze tool handles together to release ratchet.



**STEP 3**  
Slide the contact locator down from the top of the tool.



**STEP 4**  
Then from the back, push the contact locator forward between tool crimp jaws.



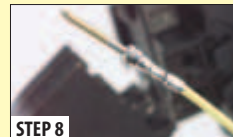
**STEP 5**  
Orient the contact so open side of wire and insulation barrels are facing up and insert contact into locator.



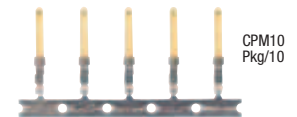
**STEP 6**  
Slide locator back placing contact between crimping jaws. Then squeeze tool handles together until ratchet engages (listen for clicking sound).



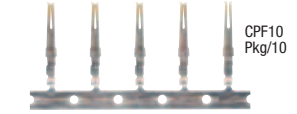
**STEP 7**  
Insert wire over contact and against wire stop. Squeeze tool handles together until ratchet releases.



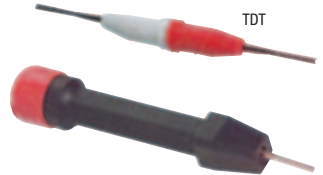
**STEP 8**  
Slide locator down, push forward and remove crimped contact.



CPM10 Pkg/10

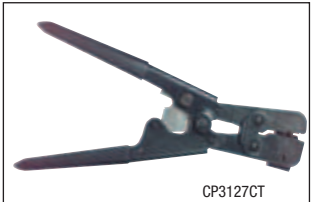


CPF10 Pkg/10



TDT

TDTPRO



CP3127CT



SD121-15

**D-Subminiature Contact Crimp Tool - For Crimp & Poke Series Pins and Sockets**

Professional grade tool crimps D-Subminiature pins and sockets for 20-30 AWG wires. Spring loaded holding mechanism centers and holds pin in place until crimping cycle is complete. Highest quality. See the Tip above for crimping instructions.

CP3127CT	D-Sub Contact Crimp Tool	120.00	117.60	115.20	112.80	110.40
----------	--------------------------	--------	--------	--------	--------	--------

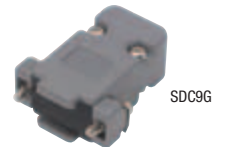
**D-Sub Hood Covers - Offering a Better Selection for Your Varied Cable Making Needs**

L-com offers a better selection of D-Sub hoods than ever before. We've discovered in our own cable production that needs are varied because users are more demanding in style selection than traditional plastic or metal hoods. They are supplied as kits with appropriate hardware for male mating. Order hex standoffs separately for female adaptation.

**✓RoHS Plastic D-Sub Hoods - Features One Piece Foldover Hinge Design**

One piece unshielded hoods are available for DB9, DB15, DB25 and DB50 sizes. They are constructed of Black plastic with long knurled thumbscrews. They feature a side snap lock for connector security and metal screw down strain relief. Attractive appearance.

SD121-09	Hinged Hood Kit, DB9 Black	1.45	1.33	1.22	1.10	0.99
SD121-15	Hinged Hood Kit, DB15 Black	1.55	1.43	1.30	1.18	1.05
SD121-25	Hinged Hood Kit, DB25 Black	1.65	1.52	1.39	1.25	1.12
SD121-50	Hinged Hood Kit, DB50 Black	2.05	1.89	1.72	1.56	1.39



SDC9G



SDC15B



SDC25M

**✓RoHS Plastic Hoods - Mate with D-Subminiature Connectors for Cabling**

Molded plastic hoods are made of flame retardant materials. The metalized version is chrome plated providing conductivity and an RFI/EMI shield. A cable strain relief is also included.

SDC9G	Assembled Hood Kit, DB9 Gray	0.85	0.78	0.71	0.65	0.58
SDC15G	Assembled Hood Kit, DB15 Gray	1.00	0.92	0.84	0.76	0.68
SDC25G	Assembled Hood Kit, DB25 Gray	1.05	0.97	0.88	0.80	0.71
SDC37G	Assembled Hood Kit, DB37 Gray	1.20	1.10	1.01	0.91	0.82
SDC9B	Assembled Hood Kit, DB9 Black	0.90	0.83	0.76	0.68	0.61
SDC15B	Assembled Hood Kit, DB15 Black	1.05	0.97	0.88	0.80	0.71
SDC25B	Assembled Hood Kit, DB25 Black	1.10	1.01	0.92	0.84	0.75
SDC9M	Assembled Hood Kit, DB9 Metalized Chrome	1.05	0.97	0.88	0.80	0.71
SDC15M	Assembled Hood Kit, DB15 Metalized Chrome	1.25	1.15	1.05	0.95	0.85
SDC25M	Assembled Hood Kit, DB25 Metalized Chrome	1.35	1.24	1.13	1.03	0.92



To see our entire product offering go to... [L-com.com](http://L-com.com)

