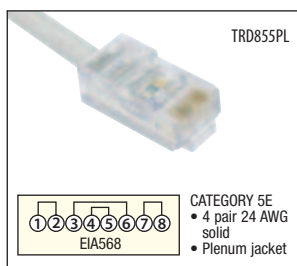
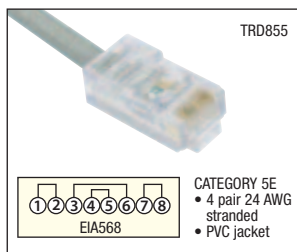
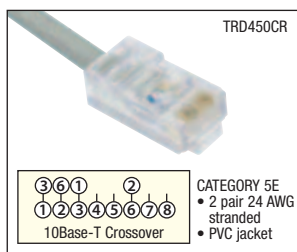
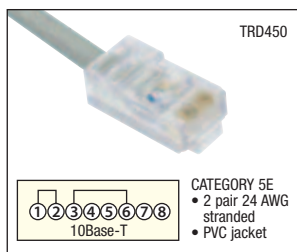
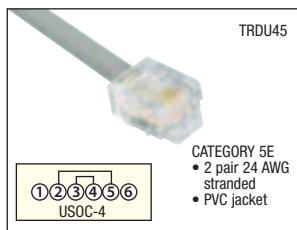


Unshielded Patch Cords



Item #	Description	Color	1-9	10-24	25-99	100-249	250-499
--------	-------------	-------	-----	-------	-------	---------	---------

Unshielded Twisted Pair Patch Cords - Category 5E, For Most Network Environments

L-com offers the high quality Category 5E patch cords for use in today's rapidly changing network environments. Category 5E calls for 100 MHz bandwidth @ 100 Mbps data rate which is currently more than adequate for standard Ethernet environments. Unshielded assemblies are manufactured with UL Listed 24 AWG stranded cable with PVC jacket. Plugs have 50 microinches of gold; assemblies tested 100% prior to shipping.

RoHS Category 5E RJ11 to RJ11 Patch Cords - 2 Pair Stranded for 4 and 16 Mb Token Ring

TRDU45-2	Cat. 5E USOC-4 Patch Cord, RJ11 / RJ11, 2.0ft (0.6m)	Beige	3.36	3.16	2.96	2.76	2.55
TRDU45-3	Cat. 5E USOC-4 Patch Cord, RJ11 / RJ11, 3.0ft (0.9m)	Beige	3.60	3.38	3.17	2.95	2.74
TRDU45-5	Cat. 5E USOC-4 Patch Cord, RJ11 / RJ11, 5.0ft (1.5m)	Beige	4.08	3.84	3.59	3.35	3.10
TRDU45-7	Cat. 5E USOC-4 Patch Cord, RJ11 / RJ11, 7.0ft (2.1m)	Beige	4.56	4.29	4.01	3.74	3.47
TRDU45-10	Cat. 5E USOC-4 Patch Cord, RJ11 / RJ11, 10.0ft (3.0m)	Beige	5.28	4.96	4.65	4.33	4.01
TRDU45-15	Cat. 5E USOC-4 Patch Cord, RJ11 / RJ11, 15.0ft (4.6m)	Beige	6.48	6.09	5.70	5.31	4.92
TRDU45-25	Cat. 5E USOC-4 Patch Cord, RJ11 / RJ11, 25.0ft (7.6m)	Beige	8.88	8.35	7.81	7.28	6.75
TRDU45-50	Cat. 5E USOC-4 Patch Cord, RJ11 / RJ11, 50.0ft (15.2m)	Beige	14.88	13.99	13.09	12.20	11.31
TRDU45-100	Cat. 5E USOC-4 Patch Cord, RJ11 / RJ11, 100.0ft (30.4m)	Beige	26.88	25.27	23.65	22.04	20.43

Twisted Pair Pinning: 2 & 5, 3 & 4.

RoHS Category 5E RJ45 to RJ45 Patch Cords - 2 Pair Stranded 24 AWG for Ethernet

TRD450-2	Cat. 5E 10Base-T Patch Cord, RJ45 / RJ45, 2.0ft (0.6m)	Beige	4.48	4.21	3.94	3.67	3.40
TRD450-3	Cat. 5E 10Base-T Patch Cord, RJ45 / RJ45, 3.0ft (0.9m)	Beige	4.72	4.44	4.15	3.87	3.59
TRD450-5	Cat. 5E 10Base-T Patch Cord, RJ45 / RJ45, 5.0ft (1.5m)	Beige	5.20	4.89	4.58	4.26	3.95
TRD450-7	Cat. 5E 10Base-T Patch Cord, RJ45 / RJ45, 7.0ft (2.1m)	Beige	5.68	5.34	5.00	4.66	4.32
TRD450-10	Cat. 5E 10Base-T Patch Cord, RJ45 / RJ45, 10.0ft (3.0m)	Beige	6.40	6.02	5.63	5.25	4.86
TRD450-15	Cat. 5E 10Base-T Patch Cord, RJ45 / RJ45, 15.0ft (4.6m)	Beige	7.60	7.14	6.69	6.23	5.78
TRD450-25	Cat. 5E 10Base-T Patch Cord, RJ45 / RJ45, 25.0ft (7.6m)	Beige	10.00	9.40	8.80	8.20	7.60
TRD450-50	Cat. 5E 10Base-T Patch Cord, RJ45 / RJ45, 50.0ft (15.2m)	Beige	16.00	15.04	14.08	13.12	12.16
TRD450-100	Cat. 5E 10Base-T Patch Cord, RJ45 / RJ45, 100.0ft (30.4m)	Beige	28.00	26.32	24.64	22.96	21.28

Twisted Pair Pinning: 1 & 2, 3 & 6.

RoHS Category 5E RJ45 to RJ45 Crossover Patch Cords - 2 Pair Stranded for Ethernet Hub Stacking

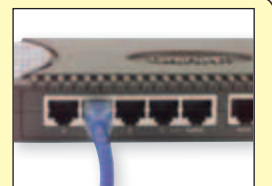
TRD450CR-2	Cat. 5E 10Base-T Crossover Patch Cord, RJ45 / RJ45, 2.0ft (0.6m)	Beige	4.48	4.21	3.94	3.67	3.40
TRD450CR-3	Cat. 5E 10Base-T Crossover Patch Cord, RJ45 / RJ45, 3.0ft (0.9m)	Beige	4.72	4.44	4.15	3.87	3.59
TRD450CR-5	Cat. 5E 10Base-T Crossover Patch Cord, RJ45 / RJ45, 5.0ft (1.5m)	Beige	5.20	4.89	4.58	4.26	3.95
TRD450CR-7	Cat. 5E 10Base-T Crossover Patch Cord, RJ45 / RJ45, 7.0ft (2.1m)	Beige	5.68	5.34	5.00	4.66	4.32
TRD450CR-10	Cat. 5E 10Base-T Crossover Patch Cord, RJ45 / RJ45, 10.0ft (3.0m)	Beige	6.40	6.02	5.63	5.25	4.86
TRD450CR-15	Cat. 5E 10Base-T Crossover Patch Cord, RJ45 / RJ45, 15.0ft (4.6m)	Beige	7.60	7.14	6.69	6.23	5.78
TRD450CR-25	Cat. 5E 10Base-T Crossover Patch Cord, RJ45 / RJ45, 25.0ft (7.6m)	Beige	10.00	9.40	8.80	8.20	7.60
TRD450CR-50	Cat. 5E 10Base-T Crossover Patch Cord, RJ45 / RJ45, 50.0ft (15.2m)	Beige	16.00	15.04	14.08	13.12	12.16
TRD450CR-100	Cat. 5E 10Base-T Crossover Patch Cord, RJ45 / RJ45, 100.0ft (30.4m)	Beige	28.00	26.32	24.64	22.96	21.28

1 & 2, 3 & 6 Crossover allows Ethernet Hub Stacking.



Which patch cords are best for a 10/100 Mbps Ethernet network?

Any of the TRD815 series patch cords found on page 40 will work effectively for ethernet networks. Choosing different colors for separate network segments in your wiring closet makes troubleshooting quick and easy.



RoHS Category 5E RJ45 to RJ45 Patch Cords - 4 Pair Stranded for EIA568 Wiring

TRD855-1	Cat. 5E EIA568 Patch Cord, RJ45 / RJ45, 1.0ft (0.3m)	Beige	3.59	3.23	2.87	2.51	2.15
TRD855-2	Cat. 5E EIA568 Patch Cord, RJ45 / RJ45, 2.0ft (0.6m)	Beige	3.89	3.50	3.11	2.72	2.33
TRD855-3	Cat. 5E EIA568 Patch Cord, RJ45 / RJ45, 3.0ft (0.9m)	Beige	4.19	3.77	3.35	2.93	2.51
TRD855-5	Cat. 5E EIA568 Patch Cord, RJ45 / RJ45, 5.0ft (1.5m)	Beige	4.79	4.31	3.83	3.35	2.87
TRD855-7	Cat. 5E EIA568 Patch Cord, RJ45 / RJ45, 7.0ft (2.1m)	Beige	5.39	4.85	4.31	3.77	3.23
TRD855-10	Cat. 5E EIA568 Patch Cord, RJ45 / RJ45, 10.0ft (3.0m)	Beige	6.29	5.66	5.03	4.40	3.77
TRD855-15	Cat. 5E EIA568 Patch Cord, RJ45 / RJ45, 15.0ft (4.6m)	Beige	7.79	7.01	6.23	5.45	4.67
TRD855-25	Cat. 5E EIA568 Patch Cord, RJ45 / RJ45, 25.0ft (7.6m)	Beige	10.79	9.71	8.63	7.55	6.47
TRD855-50	Cat. 5E EIA568 Patch Cord, RJ45 / RJ45, 50.0ft (15.2m)	Beige	18.29	16.46	14.63	12.80	10.97
TRD855-100	Cat. 5E EIA568 Patch Cord, RJ45 / RJ45, 100.0ft (30.4m)	Beige	33.29	29.96	26.63	23.30	19.97

Twisted Pair Pinning: 1 & 2, 3 & 6, 4 & 5, 7 & 8

RoHS Category 5E RJ45 to RJ45 Plenum Patch Cords - 4 Pair Solid for EIA568 Wiring

TRD855PL-1	Cat. 5E EIA568 Plenum Patch Cord, RJ45 / RJ45, 1.0ft (0.3m)	Beige	11.99	11.75	11.27	10.55	8.99
TRD855PL-2	Cat. 5E EIA568 Plenum Patch Cord, RJ45 / RJ45, 2.0ft (0.6m)	Beige	12.49	12.24	11.74	10.99	9.37
TRD855PL-3	Cat. 5E EIA568 Plenum Patch Cord, RJ45 / RJ45, 3.0ft (0.9m)	Beige	12.99	12.73	12.21	11.43	9.74
TRD855PL-5	Cat. 5E EIA568 Plenum Patch Cord, RJ45 / RJ45, 5.0ft (1.5m)	Beige	13.99	13.71	13.15	12.31	10.49
TRD855PL-7	Cat. 5E EIA568 Plenum Patch Cord, RJ45 / RJ45, 7.0ft (2.1m)	Beige	15.49	15.18	14.56	13.63	11.62
TRD855PL-10	Cat. 5E EIA568 Plenum Patch Cord, RJ45 / RJ45, 10.0ft (3.0m)	Beige	16.99	16.65	15.97	14.95	12.74
TRD855PL-15	Cat. 5E EIA568 Plenum Patch Cord, RJ45 / RJ45, 15.0ft (4.6m)	Beige	19.99	19.59	18.79	17.59	14.99
TRD855PL-25	Cat. 5E EIA568 Plenum Patch Cord, RJ45 / RJ45, 25.0ft (7.6m)	Beige	25.99	25.47	24.43	22.87	19.49
TRD855PL-50	Cat. 5E EIA568 Plenum Patch Cord, RJ45 / RJ45, 50.0ft (15.2m)	Beige	40.99	40.17	38.53	36.07	30.74
TRD855PL-75	Cat. 5E EIA568 Plenum Patch Cord, RJ45 / RJ45, 75.0ft (22.9m)	Beige	55.99	54.87	52.63	49.27	41.99
TRD855PL-100	Cat. 5E EIA568 Plenum Patch Cord, RJ45 / RJ45, 100.0ft (30.4m)	Beige	70.99	69.57	66.73	62.47	53.24
TRD855PL-150	Cat. 5E EIA568 Plenum Patch Cord, RJ45 / RJ45, 150.0ft (45.7m)	Beige	100.99	98.97	94.93	88.87	75.74
TRD855PL-200	Cat. 5E EIA568 Plenum Patch Cord, RJ45 / RJ45, 200.0ft (60.9m)	Beige	130.99	128.37	123.13	115.27	98.24
TRD855PL-250	Cat. 5E EIA568 Plenum Patch Cord, RJ45 / RJ45, 250.0ft (76.2m)	Beige	160.99	157.77	151.33	141.67	120.74
TRD855PL-300	Cat. 5E EIA568 Plenum Patch Cord, RJ45 / RJ45, 300.0ft (91.4m)	Beige	190.99	187.17	179.53	168.07	143.24

Twisted Pair Pinning: 1 & 2, 3 & 6, 4 & 5, 7 & 8

