

Item #	Description	Color	1-9	10-24	25-99	100-249	250-499
✓RoHS CAUALB-05M	USB Cable Assembly, Latching A / Standard B	Black	10.20	9.38	8.57	7.75	6.94
CAUALB-1M	USB Cable Assembly, Latching A / Standard B	Black	10.65	9.80	8.95	8.09	7.24
CAUALB-2M	USB Cable Assembly, Latching A / Standard B	Black	11.55	10.63	9.70	8.78	7.85
CAUALB-3M	USB Cable Assembly, Latching A / Standard B	Black	12.45	11.45	10.46	9.46	8.47
CAUALB-4M	USB Cable Assembly, Latching A / Standard B	Black	13.35	12.28	11.21	10.15	9.08
CAUALB-5M	USB Cable Assembly, Latching A / Standard B	Black	14.25	13.11	11.97	10.83	9.69
CAUALAL-05M	USB Cable Assembly, Latching A / Latching B	Black	11.70	10.76	9.83	8.89	7.96
CAUALAL-1M	USB Cable Assembly, Latching A / Latching B	Black	12.15	11.18	10.21	9.23	8.26
CAUALAL-2M	USB Cable Assembly, Latching A / Latching B	Black	13.05	12.01	10.96	9.92	8.87
CAUALAL-3M	USB Cable Assembly, Latching A / Latching B	Black	13.95	12.83	11.72	10.60	9.49
CAUALAL-4M	USB Cable Assembly, Latching A / Latching B	Black	14.85	13.66	12.47	11.29	10.10
CAUALAL-5M	USB Cable Assembly, Latching A / Latching B	Black	15.75	14.49	13.23	11.97	10.71

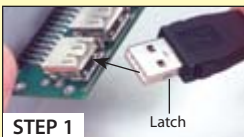
✓RoHS USB Coil Cord - Type A Latching Connector to Type B Connector, 10.5 Feet Extended

This unique cable assembly features a polyurethane jacketed coil cord plus a latching Type A USB connector providing improved mating retention with any USB Type A jack. The latches lock into the channels on each side of a USB jack when fully mated. Retracted length is approximately 2.5 feet expanding to 10.5 feet. Fully shielded and USB 2.0 compliant, this cable contains two 28 AWG power conductors plus one 28 AWG twisted pair for data lines. Color is Black.

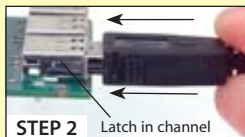
COILUAB	USB Coil Cord, Latching Type A Male / Type B Male	Black	16.95	16.27	15.59	14.41	12.71
---------	---	-------	-------	-------	-------	-------	-------



Tip How does the latching USB connector work?



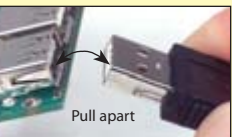
STEP 1 Insert the latching USB connector into the USB jack.



STEP 2 The latches on each side of the connector lock into the channel cut-outs of any USB jack. Note: It may be necessary to rock the latching connector slightly to set the latches into the channels.



STEP 3 To remove the latching USB connector, simply depress the release mechanisms on the sides of the backshell and pull apart.



Pull apart

✓RoHS Panel Mounted USB Type Couplers, 30 Microinches Gold

These couplers are great for connecting USB style connectors into panels, etc. Available in many USB connector combinations with your choice of shielded and unshielded versions. Unshielded is available in Black or Ivory, shielded is Silver. Recommended 4-40 mounting screws must be purchased separately.

ECF504-UAB	USB Type A - Type B Coupler	Ivory	5.95	5.83	5.59	5.24	4.46
ECF504B-UAB	USB Type A - Type B Coupler	Black	5.95	5.83	5.59	5.24	4.46
ECF504-UABS	USB Type A - Type B Coupler, Shielded	Silver	6.95	6.81	6.53	6.12	5.21
ECF504-UAAS	USB Type A - Type A Coupler, Shielded	Silver	6.95	6.81	6.53	6.12	5.21
ECF504-BAS	USB Type B - Type A Coupler, Shielded	Silver	6.95	6.81	6.53	6.12	5.21
ECF440	Machine Screws, 4-40 x 5/16", Pkg/100		4.35	4.00	3.65	3.31	2.96

USB Surge/Lightning Protector – Type A/B Connectors, Panel Mountable

The L-com AL-ECF504-AB USB surge protector is a commercial quality device designed to protect a computer's sensitive USB port from surges and spikes from attached devices. To ensure USB 2.0 speeds, the device uses ultra-low capacitance diodes to protect the data lines. In addition, a protection device clamps the power lines to safe levels. It can be mounted on an enclosure, panel mounted or used in-line as a stand alone product.

AL-ECF504-AB	USB Surge/Lightning Protector, Type A/B		15.95	14.99	14.04	13.08	12.12
--------------	---	--	-------	-------	-------	-------	-------

✓RoHS USB Keystone Feed Through Coupler – Type A/B Connectors, Fully Shielded

Our new shielded USB keystone coupler can be easily installed into typical panels, wall plate openings and enclosures. Connectors are USB A female on the front and USB B female on the back. The stamped metal shell and one piece design provides maximum protection from EMI/RFI. Contact us for aggressive pricing for your larger projects.

UADKEY-AB	USB Keystone Coupler, Type A Female / Type B Female		10.95	10.29	9.64	8.98	8.32
-----------	---	--	-------	-------	------	------	------

✓RoHS Flexible USB Adapter, Type A Male/Female

L-com's UADFLEX-1 flexible USB adapter features vertical and horizontal hinges which allow the adapter to rotate in virtually any direction, making it perfect for hard to reach or tight fit applications. This flexible USB adapter is shielded to protect against data corrupting EMI/RFI and utilizes gold plating on all contacts to provide reliable connections with repeated mating cycles.

UADFLEX-1	USB Flexible Adapter, Type A Male / Type A Female		9.99	9.19	8.39	7.59	6.79
-----------	---	--	------	------	------	------	------

✓RoHS USB Type A Low Profile Right Angle Adapters

L-com's UADAA90 series low profile right angle USB adapters are perfect for tight fit applications. Two exit options are available allowing cables to exit in opposite directions. These USB adapters are a much lower cost solution when compared to rotating USB adapters.

UADAA90-1	Right Angle USB Adapter, Type A Male / Female, Exit 1		4.95	4.55	4.16	3.76	3.37
UADAA90-2	Right Angle USB Adapter, Type A Male / Female, Exit 2		4.95	4.55	4.16	3.76	3.37

✓RoHS USB Adapters - Molded and Fully Shielded

These adapters provide an economical way for users to solve gender and connector type mismatches among standard USB connectors. UAD026MF and UAD027MF socket savers extend the life of expensive cables and ports by taking the abuse of frequently mated USB connectors.

UAD010MF	USB Adapter, Type A Male / Type B Female	Lt. Gray	4.25	4.17	3.99	3.74	3.19
UAD011FM	USB Adapter, Type A Female / Type B Male	Lt. Gray	4.25	4.17	3.99	3.74	3.19
UAD012FF	USB Adapter, Type B Female / Type B Male	Lt. Gray	4.25	4.17	3.99	3.74	3.19
UAD013FF	USB Adapter, Type A Female / Type B Female	Lt. Gray	4.25	4.17	3.99	3.74	3.19
UAD014MM	USB Adapter, Type A Male / Type A Male	Lt. Gray	4.25	4.17	3.99	3.74	3.19
UAD015FF	USB Adapter, Type A Female / Type A Female	Lt. Gray	4.25	4.17	3.99	3.74	3.19
UAD016MM	USB Adapter, Type B Male / Type B Male	Lt. Gray	4.25	4.17	3.99	3.74	3.19
UAD017FM	USB Adapter, Type A Female / Mini DIN 6 Male	Lt. Gray	4.25	4.17	3.99	3.74	3.19
UAD018MF	USB Adapter, Type A Male / Mini DIN 6 Female	Lt. Gray	4.25	4.17	3.99	3.74	3.19
UAD019FM	USB Adapter, Type A Female / Mini-B5 Male	Black	4.25	4.17	3.99	3.74	3.19
UAD026MF	USB Adapter, Type A Male / Female	Lt. Gray	4.25	4.17	3.99	3.74	3.19
UAD027MF	USB Adapter, Type B Male / Female	Lt. Gray	4.25	4.17	3.99	3.74	3.19



New CAUALB

New CAUALAL

Best Seller ECF504-UABS

New AL-ECF504-AB UADKEY-AB

New UADFLEX-1

New UADAA90-1 UADAA90-2

UAD011FM UAD012FF

UAD014MM UAD015FF

UAD017FM UAD019FM UAD026MF



Informative e-mail newsletters

Our newsletters are packed with tips, tutorials, product info and downloads! L-com.com/NewsletterSignUp

