



MWP101K-WT MWP102K-WT MWP103K-WT



MWP106K-WT MWP106K-IV



MWP102K-IV MWP102K-WT



MWP301K-IV MWP301K-WT



MWP302K-WT MWP302K-IV MWP303K-WT



MWP303K-IV MWP303K-WT MWP303K-L



ECP001 ECP002

**Medical Grade**

Meets IEC 6060-1  
Medical Device  
Safety Standards



6000693-L 6000693-L

Item #	Description	Color	1-9	10-24	25-99	100-249	250-499
--------	-------------	-------	-----	-------	-------	---------	---------

**RoHS Flush Mount Wall Plates that Accept Keystone Jacks**

The flush mount wall plate series offers a choice of keystone port options for users to configure each workstation outlet for individual needs. These wall plates come in a choice of White or Ivory and can accept up to six keystone inserts.

MWP101K-WT	Flush Wall Plate for 1 Keystone Jack	White	1.59	1.43	1.27	1.11	0.95
MWP102K-WT	Flush Wall Plate for 2 Keystone Jacks	White	1.59	1.43	1.27	1.11	0.95
MWP103K-WT	Flush Wall Plate for 3 Keystone Jacks	White	1.59	1.43	1.27	1.11	0.95
MWP104K-WT	Flush Wall Plate for 4 Keystone Jacks	White	1.59	1.43	1.27	1.11	0.95
MWP106K-WT	Flush Wall Plate for 6 Keystone Jacks	White	1.59	1.43	1.27	1.11	0.95
MWP101K-IV	Flush Wall Plate for 1 Keystone Jack	Ivory	1.59	1.43	1.27	1.11	0.95
MWP102K-IV	Flush Wall Plate for 2 Keystone Jacks	Ivory	1.59	1.43	1.27	1.11	0.95
MWP103K-IV	Flush Wall Plate for 3 Keystone Jacks	Ivory	1.59	1.43	1.27	1.11	0.95
MWP106K-IV	Flush Wall Plate for 6 Keystone Jacks	Ivory	1.59	1.43	1.27	1.11	0.95

**RoHS Angled Entry Wall Plates that Accept Keystone Jacks**

The 45° Angled Entry wall plate series offers a choice of keystone port options for users to configure each workstation outlet for individual needs. These wall plates come in a choice of White or Ivory and can accept up to four keystone inserts. Port identifying icons can be used to uniquely mark each port type for phone, data or other options.

MWP301K-WT	45 Degree Entry Wall Plate for 1 Keystone Jack	White	1.95	1.75	1.56	1.37	1.17
MWP302K-WT	45 Degree Entry Wall Plate for 2 Keystone Jacks	White	1.95	1.75	1.56	1.37	1.17
MWP303K-WT	45 Degree Entry Wall Plate for 3 Keystone Jacks	White	1.95	1.75	1.56	1.37	1.17
MWP301K-IV	45 Degree Entry Wall Plate for 1 Keystone Jack	Ivory	1.95	1.75	1.56	1.37	1.17
MWP302K-IV	45 Degree Entry Wall Plate for 2 Keystone Jacks	Ivory	1.95	1.75	1.56	1.37	1.17
MWP303K-IV	45 Degree Entry Wall Plate for 3 Keystone Jacks	Ivory	1.95	1.75	1.56	1.37	1.17

**RoHS Stainless Wall Plates for Usage in High EMI/RFI Environments or Medical Applications**

These stainless wall plates offer users a clean finish for information outlets in environments where traditional plastic wall plates are not suitable.

ECP001	Stainless Wall Plate for 1 Keystone Jack	Silver	1.95	1.87	1.79	1.72	1.64
ECP002	Stainless Wall Plate for 2 Keystone Jacks	Silver	1.95	1.87	1.79	1.72	1.64

**How to install a keystone style connector into a wall plate**

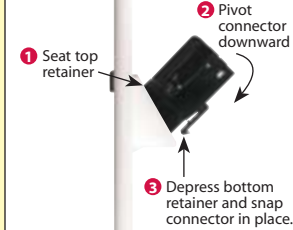


**STEP 1**



Align the connector with the wall plate with the spring retainer side down for 45 degree entry plates (as shown) or spring retainer side up for standard entry wall plates.

**STEP 2**



Seat fixed retainer first. Pivot connector down towards the spring retainer while depressing the spring retainer. Press connector into plate until retainer snaps and locks firmly in place.

**STEP 3**



The wall plate can now be installed and cables attached.

Item #	Description	Color	List Price
--------	-------------	-------	------------

**RoHS L-com Isolator Wall Plates for 10/100 and 10/100/1000 Ethernet Networks**

L-com's Ethernet Isolator wall plates are fully self-contained devices that protect valuable network equipment from damaging surges and power anomalies that commonly occur across network cabling. Operation and installation is quick and easy. Simply plug these devices in-line between the cabling behind the wall and the patch cable that normally attaches the equipment to the network. Choose from models that support 10/100 Mbps or 10/100/1000 Mbps data rates. These isolators are available in Stainless Steel or Beige High Impact ABS Plastic. Each unit is fully RoHS compliant and has been certified to meet the IEC 6060-1 Medical Device Safety Standard making them ideal for hospital and medical laboratory environments.

6000687-L	10/100/1000 Base-T Ethernet Data Isolator, Stainless	Silver	204.99
6000689-L	10/100/1000 Base-T Ethernet Data Isolator, Plastic	Ivory	199.95
6000691-L	10/100 Base-T Ethernet Data Isolator, Stainless	Silver	104.99
6000693-L	10/100 Base-T Ethernet Data Isolator, Plastic	Ivory	99.99



**Tip How isolation works**

Isolators place a physical barrier between your computer or other device and the network cables that are attached to it. Only data can travel across this barrier through the coupling of magnetic fields. Hazardous voltages and ground potential differences are blocked. Surge suppressors don't electrically separate the connected equipment - they use special components to limit the energy that can travel through a data connection. Isolators eliminate the wire connections that surge suppressors don't.

