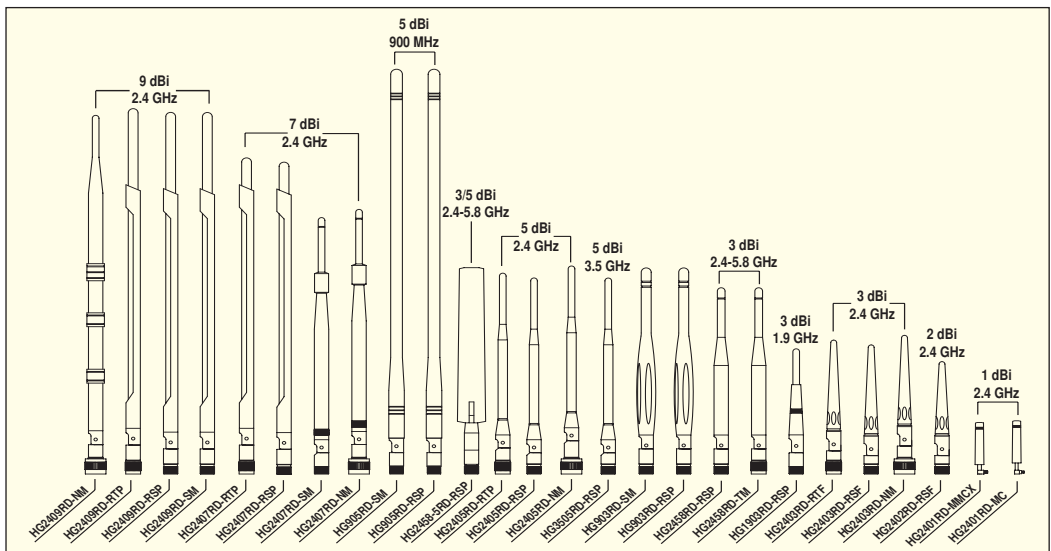




HG2405RD-RTP
Shown on a Linksys® WAP54G wireless access point



| Item # | Style | Description | 1-9 | 10-24 | 25-99 | 100-249 | 250-499 |
|--|-------|---|-------|-------|-------|---------|---------|
| 900 MHz, 1.9 GHz, 2.4/5.8 GHz and 3.5 GHz Rubber Duck Antennas | | | | | | | |
| These high performance Omnidirectional rubber duck antennas provide broad coverage and multiple gain options. HyperLink® flexible rubber duck antennas feature tilt-and-swivel connectors allowing them to be used vertically, at a right angle, or any angle in-between. Suitable as a replacement RF antenna for radios, wireless video transmitters and receivers, as well as digital spread spectrum radios. | | | | | | | |
| ✓RoHS 900 MHz Rubber Duck Antennas | | | | | | | |
| HG903RD-RSP | B | 3 dBi, Integral Tilt/Swivel RP-SMA Connector | 10.99 | 9.89 | 8.79 | 7.69 | 6.59 |
| HG903RD-SM | B | 3 dBi, Integral Tilt/Swivel SM Connector | 10.99 | 9.89 | 8.79 | 7.69 | 6.59 |
| HG905RD-RSP | B | 5 dBi, Integral Tilt/Swivel RP-SMA Connector | 19.99 | 17.99 | 15.99 | 13.99 | 11.99 |
| HG905RD-SM | B | 5 dBi, Integral Tilt/Swivel SM Connector | 19.99 | 17.99 | 15.99 | 13.99 | 11.99 |
| ✓RoHS 1.9 GHz Rubber Duck Antenna | | | | | | | |
| HG1903RD-RSP | B | 3 dBi, Integral Tilt/Swivel RP-SMA Connector | 9.99 | 8.99 | 7.99 | 6.99 | 5.99 |
| ✓RoHS 2.4 GHz Rubber Duck Antennas | | | | | | | |
| HG2401RD-MMCX | C | 1 dBi, Integral Rt Angle Fixed Mount MMCX Connector | 4.99 | 4.79 | 4.59 | 4.24 | 3.74 |
| HG2401RD-MC | C | 1 dBi, Integral Rt Angle Fixed Mount MC Connector | 2.99 | 2.96 | 2.93 | 2.90 | 2.87 |
| HG2402RD-RSF | B | 2.2 dBi, Integral Tilt/Swivel RP-SMA Connector | 5.99 | 5.39 | 4.79 | 4.19 | 3.59 |
| HG2403RD-NM | B | 3 dBi, Integral Tilt/Swivel NM Connector | 7.99 | 7.19 | 6.39 | 5.59 | 4.79 |
| HG2403RD-RSF | B | 3 dBi, Integral Tilt/Swivel RP-SMA Connector | 7.99 | 7.19 | 6.39 | 5.59 | 4.79 |
| HG2403RD-RTP | B | 3 dBi, Integral Tilt/Swivel RP-TNC Connector | 7.99 | 7.19 | 6.39 | 5.59 | 4.79 |
| HG2405RD-NM | B | 5 dBi, Integral Tilt/Swivel NM Connector | 14.99 | 13.49 | 11.99 | 10.49 | 8.99 |
| HG2405RD-RSP | B | 5 dBi, Integral Tilt/Swivel RP-SMA Connector | 9.99 | 8.99 | 7.99 | 6.99 | 5.99 |
| HG2405RD-RTP | B | 5 dBi, Integral Tilt/Swivel RP-TNC Connector | 9.99 | 8.99 | 7.99 | 6.99 | 5.99 |
| HG2407RD-NM | B | 7 dBi, Integral Tilt/Swivel NM Connector | 14.99 | 13.49 | 11.99 | 10.49 | 8.99 |
| HG2407RD-RSP | B | 7 dBi, Integral Tilt/Swivel RP-SMA Connector | 12.99 | 11.69 | 10.39 | 9.09 | 7.79 |
| HG2407RD-RTP | B | 7 dBi, Integral Tilt/Swivel RP-TNC Connector | 12.99 | 11.69 | 10.39 | 9.09 | 7.79 |
| HG2407RD-SM | B | 7 dBi, Integral Tilt/Swivel SM Connector | 14.99 | 13.49 | 11.99 | 10.49 | 8.99 |
| HG2409RD-NM | B | 9 dBi, Integral Tilt/Swivel NM Connector | 22.99 | 20.69 | 18.39 | 16.09 | 13.79 |
| HG2409RD-RSP | B | 9 dBi, Integral Tilt/Swivel RP-SMA Connector | 18.99 | 17.09 | 15.19 | 13.29 | 11.39 |
| HG2409RD-RTP | B | 9 dBi, Integral Tilt/Swivel RP-TNC Connector | 18.99 | 17.09 | 15.19 | 13.29 | 11.39 |
| HG2409RD-SM | B | 9 dBi, Integral Tilt/Swivel SM Connector | 18.99 | 17.09 | 15.19 | 13.29 | 11.39 |
| ✓RoHS 3.5 GHz Rubber Duck Antenna | | | | | | | |
| HG3505RD-RSP | B | 5 dBi, Integral Tilt/Swivel RP-SMA Connector | 14.99 | 13.49 | 11.99 | 10.49 | 8.99 |
| ✓RoHS 2.4/5.8 GHz Multi-Band Rubber Duck Antennas | | | | | | | |
| HG2458-5RD-RSP | A | 3/5 dBi, Integral Tilt/Swivel RP-SMA Connector | 16.99 | 15.29 | 13.59 | 11.89 | 10.19 |
| HG2458RD-RSP | B | 3 dBi, Integral Tilt/Swivel RP-SMA Connector | 12.99 | 11.69 | 10.39 | 9.09 | 7.79 |
| HG2458RD-SM | B | 3 dBi, Integral Tilt/Swivel SM Connector | 12.99 | 11.69 | 10.39 | 9.09 | 7.79 |
| HG2458RD-TM | B | 3 dBi, Integral Tilt/Swivel TM Connector | 6.49 | 6.10 | 5.71 | 5.32 | 4.93 |
| 1.9 GHz, 2.4 GHz Rubber Duck Desktop Mobile Antennas | | | | | | | |
| L-com's Omnidirectional rubber duck wireless LAN antennas provide broad coverage and 3-9 dBi gain. These magnetic mount antennas feature a coaxial sleeve design with an Omnidirectional pattern. These antennas were designed for IEEE 802.11b/g/n wireless LANs and 1.9 GHz cellular PCS radio applications. Mobile applications for these antennas include service vehicles, public transportation, mining vehicles, as well as numerous other commercial and industrial applications where mobility is required. The magnetic base is suitable for affixing to vehicles or other metal surfaces as well as sitting on a tabletop or shelf. | | | | | | | |
| ✓RoHS 1.9 GHz Rubber Duck Antennas with Magnetic Mount | | | | | | | |
| HG1903MGRD-SM | D | 3 dBi, 5ft Cable with SM Connector | 19.99 | 19.39 | 18.79 | 18.19 | CALL |
| HG1903MGRD-SNP |) | 3 dBi, 5ft Cable with SMA-Nano Connector | 19.99 | 19.39 | 18.79 | 18.19 | CALL |
| ✓RoHS 2.4 GHz Rubber Duck Antennas with Magnetic Mount | | | | | | | |
| HG2407MGRD-RSP | E | 7 dBi, 5ft Cable with RP-SMA Connector | 19.99 | 18.99 | 17.99 | 16.99 | CALL |
| HG2407MGRD-RTP | E | 7 dBi, 5ft Cable with RP-TNC Connector | 19.99 | 18.99 | 17.99 | 16.99 | CALL |
| HG2409MGRD-RSP | E | 9 dBi, 5ft Cable with RP-SMA Connector | 25.99 | 24.43 | 22.87 | 21.31 | 19.75 |
| HG2409MGRD-RTP | E | 9 dBi, 5ft Cable with RP-TNC Connector | 25.99 | 24.43 | 22.87 | 21.31 | 19.75 |
| ✓RoHS 2.4/5.8 GHz Multi-Band Rubber Duck Antennas with Magnetic Mount | | | | | | | |
| HG2458MGRD-RSP | F | 3/5 dBi, 5ft Cable with RP-SMA Connector | 24.99 | 23.99 | 22.99 | 21.24 | 18.74 |
| HG2458MGRD-RTP | F | 3/5 dBi, 5ft Cable with RP-TNC Connector | 24.99 | 23.99 | 22.99 | 21.24 | 18.74 |



"As a technical trainer and computer networking consultant, staying current on all the latest technologies is a must. When I was writing the CWTS Study Guide, L-com, a leading source for WLAN Antennas, Lightning Protectors and other accessories provided highly technical, yet easy-to-understand information for use in my book." - Robert Bartz, Eight-O-Two Technology Solutions, LLC, Colorado