

HyperLink® Wireless Antennas



Wireless Antenna Tutorial

■ What are Wireless Antennas?

Wireless antennas are the part of a radio communications system that radiate and/or collect radio frequency energy.

■ How are Wireless Antennas used?

Wireless antennas are typically connected via low loss coaxial cable either to an amplifier, splitter, filter or directly to a wireless access point or router. For outdoor applications wireless antennas are often attached via mounting clamps to a mast or to the side of a building via mounting brackets. Wireless Antennas used indoors are typically ceiling mounted or sometimes mounted high up on a wall.

■ Where are Wireless Antennas used?

Wireless antennas are used in many environments and for many applications. Models for both indoor and outdoor use

are available as well as specialty antennas such as Marine antennas used in nautical applications.

Wireless antennas are used in both commercial and military/government applications including small office/home office (SOHO) networks, Enterprise (office) networks, supervisory control and data acquisition (SCADA) networks, homeland security, factory automation, mining, oil processing, wireless cafe “hotspots”, energy management and control, police, fire and emergency services networks, radio frequency identification (RFID) applications, and industrial science and medical (ISM) networks.

Wireless antennas are used in/on buildings, oil rigs, wind turbines, terrestrial vehicles, boats, aircraft and other mobile and stationary platforms.

A Critical Component for Every Wireless Application...

The selection of the correct antenna is paramount to achieving overall wireless system performance. L-com's HyperLink® antennas offer a wide range of frequencies, antenna styles, gain specifications, and Beamwidth coverage for your wireless system applications and needs. When performance is essential, select the best HyperLink® antenna to fit the application.

Antenna Configurations/Characteristics

| | | | |
|---|---|--|---|
|  <p>GRID - Range, Gain, Rugged Outdoor</p> |  <p>CEILING - 360° Coverage, Indoor</p> |  <p>LOG PERIODIC - Range, Narrow Beam</p> |  <p>DIVERSITY - Multi-Band, Broad Band</p> |
|  <p>DISH - Range, Gain, Narrow Beam</p> |  <p>YAGI - Range, Narrow Beam, Gain</p> |  <p>PANEL - Gain, Wide Beam, Outdoor</p> |  <p>RUBBER DUCK - 360° Coverage, Access Points, Routers</p> |
|  <p>OMNI - 360° Coverage, Indoor/Outdoor</p> |  <p>MOBILE MOUNT - 360° Coverage, Outdoor</p> |  <p>ARRAYS - 360° Coverage, Gain, Range</p> |  <p>MARINE - 360° Coverage, Nautical Environments</p> |

Frequencies Covered by L-com's HyperLink® Antennas

- 900 MHz
- 3.5 GHz
- 5.8 GHz
- 1.2 GHz
- 4.9 GHz
- Multi-Band
- 1.9 GHz
- 5.1 GHz
- Very Broad-Band
- 2.4 GHz
- 5.3 GHz
- Custom
- 2.6 GHz
- 5.4 GHz

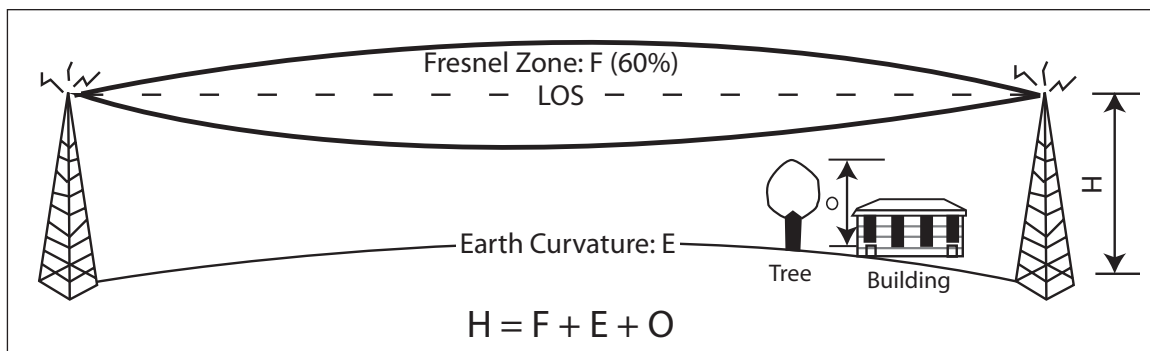


Outdoor Antenna Installation Considerations

When installing a wireless LAN antenna several factors must be considered before installation in order to obtain optimal wireless signal connectivity. The correct installation height of an antenna depends on the factors outlined below.

- 1) Distance between the sites: The longer the link, the higher the antenna needs to be due to the earth's curvature. (This relation is not proportional) See table 1.
- 2) The Fresnel Zone: This is an electromagnetic phenomenon, where light or radio signals get diffracted or bent from solid objects near their path. See table 1 showing the 60% of Fresnel Zone values (accepted clearing on path). Add this to the earth curvature height.
- 3) Objects in the path: At a frequency of 2.4 GHz, you need a clear line of sight (LOS). Tree tops will reflect or ground the signal. The theory is that the height of the tallest object in the path of the signal should be added to the Fresnel Zone and earth curvature clearance heights. In your case, you should have to check the height of the trees, hills, buildings or any object on the link path and add this to the measurement for the total of the tower height. The above three conditions make up the Radio Line of Sight.

TABLE 1



Antenna Application Examples

Directional

The HG913Y-NF is being used in a waste water lift station application. Data is being sent wirelessly to a central control location where water levels and pressure can be monitored.



Omni – Directional

L-com's HG2408U-PRO is being installed to provide 360° wireless connectivity at a public WiFi Hotspot.



Latest news

Get the latest company and product news.
L-com.com/PressReleases





HG2424G
STYLE



(Vertical)



HG2427G
STYLE



HG2430G
STYLE



HG915G-NF
STYLE



(Horizontal)



HG5421G
STYLE



(Vertical)



| Item # | Style | Description | 1-9 | 10-24 | 25-99 | 100-249 | 250-499 |
|--------|-------|-------------|-----|-------|-------|---------|---------|
|--------|-------|-------------|-----|-------|-------|---------|---------|

RoHS 2.4 GHz Grid Antennas

L-com's HyperLink® high performance reflector grid Wi-Fi antennas are available in gain ranges of 15 dBi to 30 dBi and are ideally suited for long-range highly directional applications. These applications include point to point systems, point to multipoint systems and wireless bridges in the 2.4 GHz ISM band as well as IEEE 802.11b/g/n wireless LAN systems. L-com's grid antennas can be installed for either vertical or horizontal polarization. Not all models are available in 5 packs.

- Wide range of frequencies
- Extensive selection of gain choices
- Point-to-point systems
- Point-to-multipoint systems
- Long-range directional applications
- RoHS compliant

| SOLD INDIVIDUALLY (NO 5-PACKS) | | | 1-9 | 10-24 | 25-99 | 100-249 | 250-499 |
|--------------------------------|---|---|--------|--------|--------|---------|---------|
| HG2415G-NM | A | 15 dBi, 12in Pigtail with NM Connector ANATEL Certified | 52.99 | 51.40 | 49.81 | 48.22 | 46.63 |
| HG2427G | A | 27 dBi, Integral NF Connector | 249.99 | 229.99 | 209.99 | 189.99 | 169.99 |
| HG2430G | B | 30 dBi, 18in Pigtail with NF Connector | 429.99 | 412.79 | 395.59 | 365.49 | 322.49 |
| HG2430G-NM | B | 30 dBi, 18in Pigtail with NM Connector | 479.99 | 451.19 | 422.39 | 393.59 | 364.79 |
| SOLD INDIVIDUALLY | | | 1-4 | 5-9 | 10-24 | 25+ | |
| HG2415G-NF | A | 15 dBi, 12in Pigtail with NF Connector | 36.99 | 36.62 | 36.25 | 35.88 | |
| HG2419G-NF | A | 19 dBi, 12in Pigtail with NF Connector | 44.99 | 44.54 | 44.09 | 43.64 | |
| HG2424G-NF | A | 24 dBi, 12in Pigtail with NF Connector | 57.99 | 57.41 | 56.83 | 56.25 | |
| HG2424G-NM | A | 24 dBi, 12in Pigtail with NM Connector | 59.99 | 59.39 | 58.79 | 58.19 | |
| 5-PACKS | | | 1-4 | 5-9 | 10-24 | 25+ | |
| HG2415G-NF-5PK | 1 | 15 dBi, 12in Pigtail with NF Connector, 5-Pack | 164.99 | 163.34 | 161.69 | 160.04 | |
| HG2419G-NF-5PK | 1 | 19 dBi, 12in Pigtail with NF Connector, 5-Pack | 205.99 | 199.81 | 193.63 | 187.45 | |
| HG2424G-NF-5PK | 1 | 24 dBi, 12in Pigtail with NF Connector, 5-Pack | 255.99 | 243.19 | 230.39 | 217.59 | |
| HG2424G-NM-5PK | 1 | 24 dBi, 12in Pigtail with NM Connector, 5-Pack | 259.99 | 246.99 | 233.99 | 220.99 | |

Tip Tilt and Swivel Mounting

The HG2430G antenna is supplied with a 60 degree tilt and swivel mast mount kit. This allows installation at various degrees of incline for easy alignment. Antenna alignment is critical to the system's operation between sites. This versatile mount aids the installer in the field to achieve better alignment accuracy, optimizing system performance for the user.



900 MHz, 5.4 GHz and 5.8 GHz Grid Antennas

L-com's HyperLink® grid antennas feature a multi-piece reflector grid. With this type of design they are not only easy to assemble, but it significantly reduces shipping costs compared to similar antennas with one piece reflector grid. All of our reflector grids are UV powder coated for durability and aesthetics and the open-frame design minimizes wind loading. Not all models are available in 5 packs.

- Superior performance
- Die cast aluminum construction
- All weather operation
- UV stable light gray powder coat finish
- 19° beam-width
- RoHS compliant

RoHS 900 MHz Grid Antennas

| SOLD INDIVIDUALLY (NO 5-PACKS) | | | 1-4 | 5-9 | 10-24 | 25+ |
|--------------------------------|---|--|--------|--------|--------|--------|
| HG918G-NF-2 | B | 18 dBi, 18in Pigtail with NF Connector | 327.99 | 314.87 | 301.75 | 288.63 |
| SOLD INDIVIDUALLY | | | 1-4 | 5-9 | 10-24 | 25+ |
| HG915G-NF | A | 15 dBi, 30in Pigtail with NF Connector | 73.99 | 73.25 | 72.51 | 71.77 |
| 5-PACKS | | | 1-4 | 5-9 | 10-24 | 25+ |
| HG915G-NF-5PK | A | 15 dBi, 30in Pigtail with NF Connector, 5-Pack | 337.99 | 327.85 | 317.71 | 307.57 |

RoHS 5.4 GHz Grid Antennas

| SOLD INDIVIDUALLY | | | 1-4 | 5-9 | 10-24 | 25+ |
|-----------------------------|---|---------------------------------------|--------|--------|--------|--------|
| HG5421G | A | 21 dBi, Integral NF Connector | 54.99 | 54.44 | 53.89 | 53.34 |
| HG5426G | A | 26 dBi, Integral NF Connector | 59.99 | 59.39 | 58.79 | 58.19 |
| 5-PACKS | | | 1-4 | 5-9 | 10-24 | 25+ |
| HG5421G-5PK | A | 21 dBi, Integral NF Connector, 5-Pack | 257.99 | 250.25 | 242.51 | 234.77 |
| HG5426G-5PK | A | 26 dBi, Integral NF Connector, 5-Pack | 259.99 | 252.19 | 244.39 | 236.59 |

RoHS 5.8 GHz Grid Antennas

| SOLD INDIVIDUALLY | | | 1-4 | 5-9 | 10-24 | 25+ |
|-----------------------------|---|--|--------|--------|--------|--------|
| HG5822G | A | 22 dBi, Integral NF Connector ANATEL Certified | 52.99 | 52.46 | 51.93 | 51.40 |
| HG5827G | A | 27 dBi, Integral NF Connector | 57.99 | 57.41 | 56.83 | 56.25 |
| 5-PACKS | | | 1-4 | 5-9 | 10-24 | 25+ |
| HG5822G-5PK | A | 22 dBi, Integral NF Connector, 5-Pack | 249.99 | 237.49 | 224.99 | 212.49 |
| HG5827G-5PK | A | 27 dBi, Integral NF Connector, 5-Pack | 267.99 | 259.95 | 251.91 | 243.87 |

See The Video www.L-com.com/Videos/A25

How to assemble and install a Grid Antenna

Two-piece grid antenna reflectors allow easy handling, shipping, and transportation to the site. Large grid antennas come in two symmetrical sections. They are bolted together on site easily, with feed then installed. See the online video for complete instructions at www.L-com.com/Videos/A25.



| Item # | Style | Description | 1-9 | 10-24 | 25-99 | 100-249 | 250-499 |
|--------|-------|-------------|-----|-------|-------|---------|---------|
|--------|-------|-------------|-----|-------|-------|---------|---------|

HyperLink® Omni Directional Antennas - Versatile Mounting Options and All-Weather Design

L-com offers a wide range of Wi-Fi Omnidirectional antennas for multipoint applications where very wide coverage is desired. Designed to operate in the harshest of environments, L-com's Omni antennas far exceed other Omnidirectional antennas. Multiple applications are supported including IEEE 802.11a/b/g/n wireless LAN systems, 900 MHz ISM, Wi-Fi and WiMAX.

Our Omnidirectional antennas are designed for superior performance, versatility and all-weather operation. Some of the features found in our omni antennas include vented end caps and drain holes in the base to help prevent moisture build-up inside the antenna, sealed collinear brass elements and heavy duty mounting systems. We even have a model designed for use in marine applications.

- Multipoint applications
- Public wireless hotspots
- All weather operation
- Wi-Fi and WiMAX
- Vented end caps
- RoHS compliant

✓RoHS 900 MHz Omnidirectional Antennas

| | | | | | | | |
|----------------------------|---|------------------------------|--------|--------|-------|-------|-------|
| HGV-906U | A | 6 dBi, Integral NF Connector | 54.99 | 52.79 | 50.59 | 46.74 | 41.24 |
| HG908U-PRO | A | 8 dBi, Integral NF Connector | 124.99 | 112.49 | 99.99 | 87.49 | 74.99 |

✓RoHS 1.9 GHz Omnidirectional Antennas

| | | | | | | | |
|---------------------------------|---|---------------------------------------|--------|--------|--------|--------|--------|
| HG1911U-PRO | A | 11 dBi, Integral NF Connector | 99.99 | 96.99 | 93.99 | 90.99 | 87.99 |
| HG1911U-PRO-5PK | | 11 dBi, Integral NF Connector, 5-Pack | 449.99 | 422.99 | 395.99 | 368.99 | 341.99 |

✓RoHS 2.4 GHz Omnidirectional Antennas

| | | | | | | | |
|---------------------------------|---|---|--------|--------|--------|--------|--------|
| HGV-2404U | D | 4 dBi, Integral NF Connector | 37.99 | 34.95 | 31.91 | 28.87 | 25.83 |
| HGV-2406U | D | 6 dBi, Integral NF Connector | 42.99 | 39.55 | 36.11 | 32.67 | 29.23 |
| HGV-2409U | D | 8.5 dBi, Integral NF Connector | 49.99 | 47.99 | 45.99 | 42.49 | 37.49 |
| HG2408U-NF | B | 8 dBi, 12in Pigtail with NF Connector | 65.99 | 62.69 | 59.39 | 56.09 | CALL |
| HG2408U-NM | B | 8 dBi, 12in Pigtail with NM Connector | 69.99 | 66.49 | 62.99 | 59.49 | CALL |
| HG2408U-RBP | B | 8 dBi, 12in Pigtail with RP-BNC Connector | 75.99 | 72.19 | 68.39 | 64.59 | CALL |
| HG2408U-RSP | B | 8 dBi, 12in Pigtail with RP-SMA Connector | 69.99 | 66.49 | 62.99 | 59.49 | CALL |
| HG2408U-RTP | B | 8 dBi, 12in Pigtail with RP-TNC Connector | 69.99 | 66.49 | 62.99 | 59.49 | CALL |
| HG2408U-PRO | A | 8 dBi, Integral NF Connector | 73.99 | 73.25 | 72.51 | 71.77 | CALL |
| HG2408U-PRO-5PK | | 8 dBi, Integral NF Connector, 5-Pack | 299.99 | 287.99 | 275.99 | 254.99 | 224.99 |
| HG2409U | D | 8.5 dBi, Integral NM Connector | 49.99 | 45.99 | 41.99 | 37.99 | 33.99 |
| HG2409UM-RSP | D | 8.5 dBi, Marine, 3ft Pigtail with RP-SMA Connector | 109.99 | 98.99 | 87.99 | 76.99 | 65.99 |
| HG2409UDT-PRO | A | 9 dBi, 7 Degree Down-Tilt, Integral NF Connector | 71.99 | 68.39 | 64.79 | 61.19 | CALL |
| HGV-2410U | C | 10 dBi, Integral NF Connector | 59.99 | 57.59 | 55.19 | 50.99 | 44.99 |
| HG2411UDT-PRO | A | 11 dBi, NF Connector with 8 Degree Electrical Down-Tilt | 79.99 | 75.99 | 71.99 | 67.99 | CALL |
| HG2412U-NF | C | 12 dBi, 12in Pigtail with NF Connector | 62.99 | 59.84 | 56.69 | 53.54 | CALL |
| HG2412U-NM | C | 12 dBi, 12in Pigtail with NM Connector | 69.99 | 66.49 | 62.99 | 59.49 | CALL |
| HG2412U-RTP | C | 12 dBi, 12in Pigtail with RP-TNC Connector | 69.99 | 66.49 | 62.99 | 59.49 | CALL |
| HG2412U-PRO-AN | C | 12 dBi, 12in Pigtail with NF Connector ANATEL Certified | 99.99 | 93.99 | 87.99 | 81.99 | 75.99 |
| HG2415U-PRO | A | 15 dBi, Integral NF Connector | 114.99 | 110.39 | 105.79 | 101.19 | 96.59 |
| HG2415U-PRO-5PK | | 15 dBi, Integral NF Connector, 5-Pack | 499.99 | 459.99 | 419.99 | 379.99 | 339.99 |

✓RoHS 2.6 GHz Omnidirectional Antennas

| | | | | | | | |
|-------------------------|---|--------------------------------|-------|-------|-------|-------|-------|
| HC2609U | D | 8.5 dBi, Integral NM Connector | 59.99 | 55.19 | 50.39 | 45.59 | 40.79 |
|-------------------------|---|--------------------------------|-------|-------|-------|-------|-------|

✓RoHS 3.5 GHz Omnidirectional Antennas

| | | | | | | | |
|---------------------------------|---|---------------------------------------|--------|--------|--------|--------|--------|
| HG3511U-PRO | B | 11 dBi, Integral NF Connector | 79.99 | 77.59 | 75.19 | 72.79 | 70.39 |
| HG3511U-PRO-5PK | | 11 dBi, Integral NF Connector, 5-Pack | 375.00 | 360.00 | 345.00 | 318.75 | 281.25 |

✓RoHS 5.8 GHz 11 dBi 8 Degree Omnidirectional Antenna

| | | | | | | | |
|-------------------------------|---|---|-------|-------|-------|-------|------|
| HG5811UDT-PRO | C | 11 dBi, NF Connector with 8 Degree Electrical Down-Tilt | 77.99 | 74.09 | 70.19 | 66.29 | CALL |
|-------------------------------|---|---|-------|-------|-------|-------|------|

✓RoHS 5.3/5.8 GHz Omnidirectional Antennas

| | | | | | | | |
|---------------------------------|---|--|--------|--------|--------|--------|--------|
| HG5310U | C | 5.3 GHz, 10 dBi, Integral NF Connector | 69.99 | 67.19 | 64.39 | 59.49 | 52.49 |
| HG5412U | C | 5.4 GHz, 12 dBi, Integral NF Connector | 79.99 | 76.79 | 73.59 | 67.99 | 59.99 |
| HG5808U | C | 5.8 GHz, 8 dBi, Integral NF Connector | 79.99 | 71.99 | 63.99 | 55.99 | 47.99 |
| HG5812U-PRO | A | 5.8 GHz, 12 dBi, Integral NF Connector | 89.99 | 86.39 | 82.79 | 79.19 | 75.59 |
| HG5812U-PRO-5PK | | 5.8 GHz, 12 dBi, Integral NF Connector, 5-Pack | 439.99 | 395.99 | 351.99 | 307.99 | 263.99 |

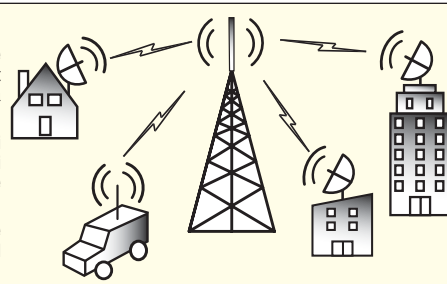


Point-to-Multipoint Application

L-com's HyperLink® Omni antennas provide wide, 360° coverage over large areas. These antennas provide connectivity to a varied mix of receiver/transmit antennas (or points) mounted in proximity or range of the base Omni antenna installation.

These multipoint antennas are typically focused or pointed to the base Omni antenna to complete the signal links. Mobile applications typically use Omni antennas to receive/send by establishing a link to the signal source antenna (the base Omni in this example).

In early 2009 L-com introduced a new 7° to 8° down tilt Omni antenna to improve coverage by moving the energy into a down looking pattern, improving overall connectivity for the system users.



Same day shipping
 Orders placed before 4:00 EST ship the same day.



| Item # | Style | Description | 1-9 | 10-24 | 25-99 | 100-249 | 250-499 |
|--------|-------|-------------|-----|-------|-------|---------|---------|
|--------|-------|-------------|-----|-------|-------|---------|---------|

900 MHz, 1.9 GHz, 2.4 GHz and 5.8 GHz Yagi Antennas - Designed for Long Range Directional Operation

These rugged outdoor rated directional Yagi antennas are ideally suited for IEEE 802.11b/g/n, PCS and 900 MHz ISM applications. HyperLink® offers both radome enclosed models as well as non-radome enclosed Yagi antennas. A multitude of gain and connector options are available. For a complete listing of HyperLink® Yagi antennas visit www.L-com.com.

✓RoHS 900 MHz Yagi Antennas

| | | | | | | | |
|------------|---|---|--------|--------|--------|--------|--------|
| HG903YE-NF | A | 3 dBi, Aluminum, 15in Pigtail with NF Connector | 24.99 | 22.49 | 19.99 | 17.49 | 14.99 |
| HG906YE-NF | A | 6 dBi, Aluminum, 15in Pigtail with NF Connector | 27.99 | 25.19 | 22.39 | 19.59 | 16.79 |
| HG909YE-NF | A | 9 dBi, Aluminum, 15in Pigtail with NF Connector | 31.99 | 28.79 | 25.59 | 22.39 | 19.19 |
| HG912YE-NF | A | 12 dBi, Aluminum, 15in Pigtail with NF Connector | 33.99 | 30.59 | 27.19 | 23.79 | 20.39 |
| HG914YE-NF | A | 14 dBi, Aluminum, 15in Pigtail with NF Connector | 41.99 | 37.79 | 33.59 | 29.39 | 25.19 |
| HG909Y-NF | A | 9 dBi, Stainless Steel, 18in Pigtail with NF Connector | 31.99 | 30.71 | 29.43 | 27.19 | 23.99 |
| HG909Y-NM | A | 9 dBi, Stainless Steel, 18in Pigtail with NM Connector | 45.99 | 44.15 | 42.31 | 39.09 | 34.49 |
| HG913Y-NF | A | 13 dBi, Stainless Steel, 18in Pigtail with NF Connector | 47.99 | 46.07 | 44.15 | 40.79 | 35.99 |
| HG913Y-NM | A | 13 dBi, Stainless Steel, 18in Pigtail with NM Connector | 59.99 | 57.59 | 55.19 | 50.99 | 44.99 |
| HG914Y-NF | A | 14 dBi, Aluminum, 12in Pigtail with NF Connector | 119.99 | 115.19 | 110.39 | 101.99 | 89.99 |
| HG914Y-NM | A | 14 dBi, Aluminum, 12in Pigtail with NM Connector | 134.99 | 129.59 | 124.19 | 114.74 | 101.24 |

1.9 GHz Yagi Antenna

| | | | | | | | |
|-------------|---|--|-------|-------|-------|-------|-------|
| HG1912SY-NF | A | 12 dBi, Stainless Steel, 7in Pigtail with NF Connector | 44.99 | 41.39 | 37.79 | 34.19 | 30.59 |
|-------------|---|--|-------|-------|-------|-------|-------|

✓RoHS 2.4 GHz Yagi Antennas

| | | | | | | | |
|-------------|---|---|-------|-------|-------|-------|-------|
| HG2409Y-NF | B | 9 dBi, Radome Enclosed, 12in Pigtail with NF Connector | 39.99 | 35.99 | 31.99 | 27.99 | 23.99 |
| HG2409Y-NM | B | 9 dBi, Radome Enclosed, 12in Pigtail with NM Connector | 49.99 | 44.99 | 39.99 | 34.99 | 29.99 |
| HG2412SY-NF | A | 12 dBi, Stainless Steel, 7in Pigtail with NF Connector | 44.99 | 41.39 | 37.79 | 34.19 | 30.59 |
| HG2412Y-NF | B | 12 dBi, Radome Enclosed, 12in Pigtail with NF Connector | 44.99 | 40.49 | 35.99 | 31.49 | 26.99 |
| HG2412Y-NM | B | 12 dBi, Radome Enclosed, 12in Pigtail with NM Connector | 54.99 | 49.49 | 43.99 | 38.49 | 32.99 |
| HG2415Y-NF | B | 14.5 dBi, Radome Enclosed, 12in Pigtail with NF Connector | 44.99 | 41.39 | 37.79 | 34.19 | 30.59 |
| HG2415Y-NM | B | 14.5 dBi, Radome Enclosed, 12in Pigtail with NM Connector | 44.99 | 41.39 | 37.79 | 34.19 | 30.59 |

✓RoHS 2.4/5.8 GHz Log Periodic Antennas

| | | | | | | | |
|----------------|---|---|-------|-------|-------|-------|-------|
| HG2458-08LP-NF | C | 8 dBi, Radome Enclosed, 9in Pigtail with NF Connector | 64.99 | 58.49 | 51.99 | 45.49 | 38.99 |
|----------------|---|---|-------|-------|-------|-------|-------|

900 MHz, 1.2 GHz, 1.9 GHz and 2.4 GHz Range Extender Antennas

HyperLink® range extender antennas can be used to achieve greater range than standard Rubber Duck antennas or a PC card's internal antenna. Full 360° coverage is provided by the Omni-Directional antennas and the Patch style range extender antennas feature directional operation. This series supports various applications including 2.4 GHz IEEE 802.11b/g/n wireless LANs, 800-1800 MHz ISM, GSM and RFID. Patch style antennas are designed for indoor use only and the Omni-Directional style range extenders can be used indoors or outdoors.

✓RoHS 800/900 MHz Range Extender Antennas

| | | | | | | | |
|------------|---|--|-------|-------|-------|-------|-------|
| RE905U-SM | C | 5 dBi, Integral MAG Mount Omni 4ft Cable SMA Male Connector | 19.99 | 17.99 | 15.99 | 13.99 | 11.99 |
| RE905U-TM | C | 5 dBi, Integral MAG Mount Omni 4ft Cable TNC Male Connector | 19.99 | 17.99 | 15.99 | 13.99 | 11.99 |
| RE905U-RSP | C | 5 dBi, Integral MAG Mount Omni 4ft Cable RP SMA Plug Connector | 19.99 | 17.99 | 15.99 | 13.99 | 11.99 |
| RE905U-NM | C | 5 dBi, Integral MAG Mount Omni 4ft Cable N Male Connector | 24.99 | 22.49 | 19.99 | 17.49 | 14.99 |

✓RoHS 900/1800-1900 MHz Range Extender Antennas

| | | | | | | | |
|-------------|---|---|-------|-------|-------|-------|-------|
| RE1903U-MC | C | 3 dBi, Integral MAG Mount Omni 4ft Cable MC Card Connector | 15.99 | 14.39 | 12.79 | 11.19 | CALL |
| RE1903U-NM | C | 3 dBi, Integral MAG Mount Omni 4ft Cable N Male Connector | 22.99 | 20.69 | 18.39 | 16.09 | 13.79 |
| RE1903U-SM | C | 3 dBi, Integral MAG Mount Omni 4ft Cable SMA Male Connector | 17.99 | 16.19 | 14.39 | 12.59 | 10.79 |
| RE1903U-SNP | C | 3 dBi, Integral MAG Mount Omni 4ft Cable SMA Nano Connector | 15.99 | 14.39 | 12.79 | 11.19 | CALL |
| RE1903U-TM | C | 3 dBi, Integral MAG Mount Omni 4ft Cable TNC Male Connector | 22.99 | 20.69 | 18.39 | 16.09 | 13.79 |

✓RoHS 1.2 GHz Range Extender Antenna

| | | | | | | | |
|------------|---|--|-------|-------|-------|-------|------|
| RE1208P-SM | E | 8 dBi, 8in Square, 3ft Pigtail with SM Connector | 29.99 | 28.49 | 26.99 | 25.49 | CALL |
|------------|---|--|-------|-------|-------|-------|------|

✓RoHS 1.9 GHz Range Extender Antennas

| | | | | | | | |
|-------------|---|--|-------|-------|-------|-------|-------|
| RE1905U-SM | A | 5 dBi, Integral MAG Mount, 4ft Cable with SM Connector | 19.99 | 17.99 | 15.99 | 13.99 | 11.99 |
| RE1905U-SNP | A | 5 dBi, Integral MAG Mount, 4ft Cable with SMA-Nano Connector | 19.99 | 17.99 | 15.99 | 13.99 | CALL |

✓RoHS 2.4 GHz Range Extender Antennas

| | | | | | | | |
|------------|---|--|-------|-------|-------|-------|-------|
| RE05ER-MC | B | 5 dBi, 19in Cable with MC Connector | 13.99 | 12.87 | 11.75 | 10.63 | 9.51 |
| RE05ER-NM | B | 5 dBi, 19in Cable with MMCX Connector | 15.99 | 14.71 | 13.43 | 12.15 | 10.87 |
| RE05ET-RSP | B | 5 dBi, Integral MAG Mount, 4ft Cable with RP-SMA Connector | 14.99 | 13.49 | 11.99 | 10.49 | 8.99 |
| RE05U-MM | C | 5 dBi, Integral MAG Mount, 4ft Cable with MMCX Connector | 9.99 | 8.99 | 7.99 | 6.99 | 5.99 |
| RE05U-RSP | C | 5 dBi, Integral MAG Mount, 4ft Cable with RP-SMA Connector | 9.99 | 8.99 | 7.99 | 6.99 | 5.99 |
| RE05U-RTP | C | 5 dBi, Integral MAG Mount, 4ft Cable with RP-TNC Connector | 9.99 | 8.99 | 7.99 | 6.99 | 5.99 |
| RE06P-RSP | E | 6 dBi, 4in Square, 4ft Cable with RP-SMA Connector | 26.99 | 24.83 | 22.67 | 20.51 | 18.35 |
| RE06P-RTP | E | 6 dBi, 4in Square, 4ft Cable with RP-TNC Connector | 26.99 | 24.83 | 22.67 | 20.51 | 18.35 |
| RE07U-MM | C | 7 dBi, Integral MAG Mount, 4ft Cable with MMCX Connector | 14.99 | 13.49 | 11.99 | 10.49 | 8.99 |
| RE07U-RSP | C | 7 dBi, Integral MAG Mount, 4ft Cable with RP-SMA Connector | 14.99 | 13.49 | 11.99 | 10.49 | 8.99 |
| RE07U-RTP | C | 7 dBi, Integral MAG Mount, 4ft Cable with RP-TNC Connector | 14.99 | 13.49 | 11.99 | 10.49 | 8.99 |
| RE08P-RSP | A | 8 dBi, 4in Round, 4ft Cable with RP-SMA Connector | 31.99 | 28.79 | 25.59 | 22.39 | 19.19 |
| RE08P-RTP | A | 8 dBi, 4in Round, 4ft Cable with RP-TNC Connector | 31.99 | 28.79 | 25.59 | 22.39 | 19.19 |
| RE09U-RSP | D | 8 dBi, Integral MAG Mount, 4ft Cable with RP-SMA Connector | 59.99 | 56.39 | 52.79 | 49.19 | 45.59 |
| RE09U-RTP | D | 8 dBi, Integral MAG Mount, 4ft Cable with RP-TNC Connector | 59.99 | 56.39 | 52.79 | 49.19 | 45.59 |
| RE09P-RSP | E | 8 dBi, 4in Square, 4ft Cable with RP-SMA Connector | 29.99 | 26.99 | 23.99 | 20.99 | 17.99 |
| RE09P-RTP | E | 8 dBi, 4in Square, 4ft Cable with RP-TNC Connector | 29.99 | 26.99 | 23.99 | 20.99 | 17.99 |
| RE11DP-RSP | E | 11 dBi, 8in Square, Dual Polarized, 3ft Cables with RP-SMA Connector | 29.99 | 27.59 | 25.19 | 22.79 | CALL |
| RE11DP-RTP | E | 11 dBi, 8in Square, Dual Polarized, 3ft Cables with RP-TNC Connector | 29.99 | 27.59 | 25.19 | 22.79 | CALL |
| RE11DS-RSP | E | 11 dBi, 8in Square, Dual Spacial, 3ft Cables with RP-SMA Connector | 29.99 | 27.59 | 25.19 | 22.79 | CALL |
| RE11DS-RTP | E | 11 dBi, 8in Square, Dual Spacial, 3ft Cables with RP-TNC Connector | 29.99 | 27.59 | 25.19 | 22.79 | CALL |
| RE14P-RSP | E | 14 dBi, 8in Square, 3ft Cable with RP-SMA Connector | 34.99 | 31.49 | 27.99 | 24.49 | CALL |
| RE14P-RTP | E | 14 dBi, 8in Square, 3ft Cable with RP-TNC Connector | 34.99 | 31.49 | 27.99 | 24.49 | CALL |

To see our full line of Range Extender Antennas go to www.L-com.com.



Parabolic Dish Antennas - Superior Strength Design Ensures Durability

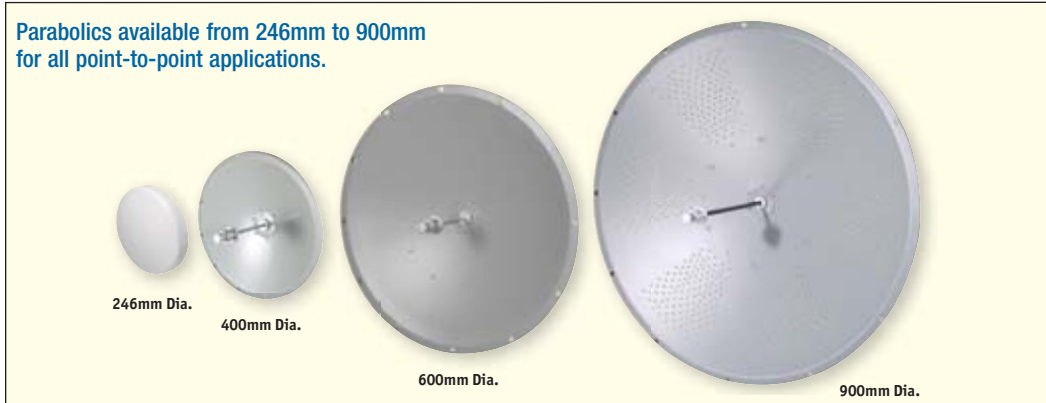
Our Wi-Fi parabolic dish antennas feature a high quality aluminum reflector dish for superior strength. The dish is coated in a light gray UV-inhibited polymer for durability and aesthetics. These directional dish antennas can be used in point to point as well as point to multipoint applications.

Built to withstand the elements, HyperLink® dish antennas offer high performance at competitive prices. When designing these Wi-Fi parabolic dish antennas, our design team factored in requirements such as location usage and environmental extremes. From versatile mounting options to features such as perforated reflectors, these antennas were built to withstand the test of time while maintaining optimal performance.

- Point-to-point systems
- Point-to-multipoint systems
- High quality aluminum construction
- All weather operation
- Many frequencies to choose from
- RoHS compliant



| Item # | Style | Description | 1-9 | 10-24 | 25-99 | 100-249 | 250-499 |
|--|-------|--|--------|--------|--------|---------|---------|
| ✓RoHS 2.4 GHz Dish Antennas | | | | | | | |
| HG2414D | D | 14 dBi, 260mm Dia, Integral NF Connector | 35.99 | 34.19 | 32.39 | 30.59 | CALL |
| ✓RoHS 3.5 GHz Dish Antennas | | | | | | | |
| HG3516D | A | 16 dBi, 246mm Dia, Integral NF Connector | 49.99 | 45.99 | 41.99 | 37.99 | CALL |
| ✓RoHS 4.9 GHz Dish Antennas | | | | | | | |
| HG4931D | B | 30.5 dBi, 900mm Dia, Integral NF Connector | 249.99 | 242.49 | 234.99 | 227.49 | CALL |
| ✓RoHS 5.3 GHz Dish Antennas | | | | | | | |
| HG5328D | B | 28 dBi, 600mm Dia, Integral NF Connector | 167.99 | 162.95 | 157.91 | 152.87 | CALL |
| ✓RoHS 5.4 GHz Dish Antennas | | | | | | | |
| HG5423D | B | 23 dBi, 400mm Dia, Integral NF Connector | 129.99 | 124.79 | 119.59 | 110.49 | 97.49 |
| HG5428D | B | 28 dBi, 600mm Dia, Integral NF Connector | 167.99 | 159.59 | 151.19 | 142.79 | CALL |
| HG5432D | B | 32 dBi, 900mm Dia, Integral NF Connector | 239.99 | 232.79 | 225.59 | 218.39 | CALL |
| ✓RoHS 5.8 GHz Dish Antennas | | | | | | | |
| HG5817D | A | 17 dBi, 246mm Dia, Integral NF Connector | 41.99 | 39.89 | 37.79 | 35.69 | CALL |
| HG5824D | B | 24 dBi, 400mm Dia, Integral NF Connector | 137.99 | 132.47 | 126.95 | 117.29 | 103.49 |
| HG5829D | B | 29 dBi, 600mm Dia, Integral NF Connector | 169.99 | 161.49 | 152.99 | 144.49 | CALL |
| HG5833D | B | 33 dBi, 900mm Dia, Integral NF Connector | 254.99 | 247.34 | 239.69 | 232.04 | CALL |
| ✓RoHS 5.1/5.8 GHz Broadband Dish Antennas | | | | | | | |
| HG5158D | C | 30 dBi, Offset Feed, 830mm Dia, Integral NF Connector | 157.99 | 153.25 | 148.51 | 143.77 | CALL |
| HG5158DP-29D | B | 28.5 dBi, Dual Polarized, 600mm Dia, Integral NF Connector | 259.99 | 246.99 | 233.99 | 220.99 | CALL |
| HG5158DP-32D | B | 32 dBi, Dual Polarized, 900mm Dia, Integral NF Connector | 339.99 | 322.99 | 305.99 | 288.99 | CALL |



Parabolics available from 246mm to 900mm for all point-to-point applications.

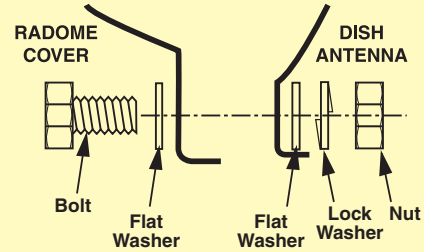
✓RoHS Radome Cover Kits

HyperLink® radome covers are an ideal way to provide additional protection to our parabolic dish antennas. These lightweight radome kits feature fiberglass construction and UV stable gray finish. Drain holes are provided on the radome cover to help prevent moisture build-up inside the dish antenna.

| | | | | | | |
|------------------------|-------------------------------------|-------|-------|-------|-------|-------|
| HGR-04 | Radome Cover Kit for 400mm Dia Dish | 42.99 | 39.55 | 36.11 | 32.67 | 29.23 |
| HGR-06 | Radome Cover Kit for 600mm Dia Dish | 54.99 | 51.69 | 48.39 | 45.09 | 41.79 |
| HGR-09 | Radome Cover Kit for 900mm Dia Dish | 64.99 | 62.39 | 59.79 | 55.24 | 48.74 |

Tip Easily attach a radome cover

L-com's HyperLink® radome kits bolt directly to the dish antennas with the provided stainless steel hardware. Drilling mounting holes in the antenna is not required. The radome cover can be attached to existing antennas already mounted in the field or preassembled to the antenna before mounting.



Fiberglass Cover Kits - Protects against the elements.

To see our entire product offering go to...www.L-com.com



HG2414P-NF
STYLE
A



HG2416P
STYLE
A



HG2412P
STYLE
B

HG2408P-NF
STYLE
C



HG2418P
STYLE
D



HG2405SD-135-NM
STYLE
E



| Item # | Style | Description | 1-9 | 10-24 | 25-99 | 100-249 | 250-499 |
|--------|-------|-------------|-----|-------|-------|---------|---------|
|--------|-------|-------------|-----|-------|-------|---------|---------|

HyperLink® Patch and Panel Antennas - Compact and Lightweight

These high performance directional patch and panel antennas are available for indoor and outdoor applications covering multiple popular frequencies. Our patch antennas are lightweight and feature aesthetic UV-stable, UL flame rated plastic radomes which can also be painted to match the room or building structure. Designed to be installed for horizontal or vertical polarization, they can be wall or ceiling mounted, as well as mast mounted using U-bolts.

Designed specifically as cost-effective solutions for today's demanding wireless applications, HyperLink® patch and panel antenna products offer a unique combination of superior all-weather performance, durability and aesthetics. Applications include IEEE 802.11b/g/n, 900 MHz cellular, RFID, 802.16, 802.20 and WiMAX.

- Point-to-point systems
- Point-to-multipoint systems
- Indoor and outdoor models available
- Public wireless hotspot
- Easy to install
- RoHS compliant

Mounting:

L-com's patch antennas offer several unique mounting options. They can be mounted flat against a wall, or to a mast using a pair of 2 inch U-bolts. The antennas also accept most tilt-and-swivel security camera brackets equipped with standard 1/4-20 threads.



HG2414P Rear view



HG2408P-NF Rear view

Flush Mount:

The HG2408P-NF can be mounted flat against the wall or ceiling. Its unique design allows the cable to exit out of the side or from the back of the unit which is ideal for mounting in locations that require the cable to be hidden.

✓RoHS 900 MHz Patch Antennas

| | | | | | | | |
|-----------|---|---|-------|-------|-------|-------|-------|
| HG908P-NF | A | 8 dBi, 8in Square, 12in Pigtail with NF Connector | 44.99 | 40.49 | 35.99 | 31.49 | 26.99 |
| HG908P-SM | A | 8 dBi, 8in Square, 12in Pigtail with SM Connector | 54.99 | 49.49 | 43.99 | 38.49 | 32.99 |

✓RoHS 1.9 GHz Patch Antennas

| | | | | | | | |
|------------|---|--|-------|-------|-------|-------|-------|
| HG1908P-NF | A | 8 dBi, 4in Square, 12in Pigtail with NF Connector | 39.99 | 35.99 | 31.99 | 27.99 | 23.99 |
| HG1912P-NF | A | 12 dBi, 8in Square, 12in Pigtail with NF Connector | 49.99 | 48.49 | 46.99 | 45.49 | CALL |

✓RoHS 2.4 GHz Patch Antennas

| | | | | | | | |
|--------------|---|---|-------|-------|-------|-------|-------|
| HG2408P-NF | C | 8 dBi, 4in Round, 12in Pigtail with NF Connector | 24.99 | 22.49 | 19.99 | 17.49 | 14.99 |
| HG2409PCL-NF | A | 8 dBi, 4in Square, LH Cir Polarized, 12in Pigtail with NF Connector | 14.99 | 13.79 | 12.59 | 11.39 | 10.19 |
| HG2409PCR-NF | A | 8 dBi, 4in Square, RH Cir Polarized, 12in Pigtail with NF Connector | 14.99 | 13.49 | 11.99 | 10.49 | 8.99 |
| HG2409P-NF | A | 8 dBi, 4in Square, 12in Pigtail with NF Connector | 21.99 | 19.79 | 17.59 | 15.39 | 13.19 |
| HG2412P | B | 12 dBi, 4in Square, Integral NF Connector | 25.99 | 23.91 | 21.83 | 19.75 | 17.67 |
| HG2414P | A | 14 dBi, 8in Square, Integral NF Connector | 36.99 | 34.03 | 31.07 | 28.11 | 25.15 |
| HG2414P-NF | A | 14 dBi, 8in Square, 12in Pigtail with NF Connector | 32.99 | 30.35 | 27.71 | 25.07 | 22.43 |
| HG2416P | A | 15.5 dBi, 8in Square, Integral NF Connector | 47.99 | 44.15 | 40.31 | 36.47 | 32.63 |
| HG2418P | D | 18 dBi, 12in Pigtail with NF Connector | 52.99 | 50.34 | 47.69 | 45.04 | CALL |
| HG2458-09P | A | 9 dBi, 8in Square, Multi-Band, Integral NF Connector | 69.99 | 64.39 | 58.79 | 53.19 | 47.59 |

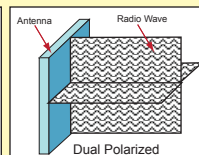
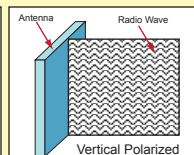
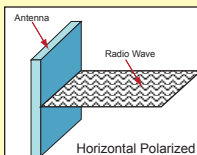
✓RoHS 2.6 GHz Patch Antenna

| | | | | | | | |
|------------|---|--|-------|-------|-------|-------|-------|
| HG2614P-NF | A | 14 dBi, 8in Square, 12in Pigtail with NF Connector | 44.99 | 40.49 | 35.99 | 31.49 | 26.99 |
|------------|---|--|-------|-------|-------|-------|-------|

Tip What is Polarity?

Polarization refers to the orientation of the electric field component of an electromagnetic wave with respect to the Earth's surface. An electromagnetic wave is composed of electric and magnetic fields propagating perpendicular to each other. Radio and light are both electromagnetic waves.

Electromagnetic waves can propagate with linear, circular or elliptical polarization. Linear polarization is the most popular method used in WiFi communications and can take two forms, vertical and horizontal. Some antennas utilize dual polarity which provides access and interoperability with both vertical and horizontal polarized antennas.



✓RoHS 2.4 GHz 5 dBi Wide Angle Patch Antennas

These compact 2.4 GHz Wi-Fi antennas provide 5 dBi Gain with broad horizontal beam width of 135 degrees. They are ideally suited for applications requiring coverage of a wide area such as an office, public hotspot, industrial or warehouse use. These antennas are lightweight and feature an aesthetic UV-stable, white ABS UL Flame Rated radome and can also be painted to match the room or building structure. The HG2405P-135 can be installed for horizontal or vertical polarization.

| | | | | | | | |
|------------------|---|---|-------|-------|-------|-------|-------|
| HG2405P-135-NF | E | 5 dBi, Wide Angle, 12in NF Connector | 32.99 | 31.01 | 29.03 | 27.05 | 25.07 |
| HG2405P-135-NM | E | 5 dBi, Wide Angle, 4ft. NM Connector | 32.99 | 31.01 | 29.03 | 27.05 | 25.07 |
| HG2405P-135-RSP | E | 5 dBi, Wide Angle, 4ft. RP SMA Plug Connector | 32.99 | 31.01 | 29.03 | 27.05 | 25.07 |
| HG2405P-135-RTP | E | 5 dBi, Wide Angle, 4ft. RP TNC Plug Connector | 32.99 | 31.01 | 29.03 | 27.05 | 25.07 |
| HG2405SD-135-NF | E | 5 dBi, Wide Angle Spatial Diversity, 12in Dual NF Connectors | 37.99 | 34.95 | 31.91 | 28.87 | 25.83 |
| HG2405SD-135-NM | E | 5 dBi, Wide Angle Spatial Diversity, 4ft. Dual NM Connectors | 39.99 | 36.79 | 33.59 | 30.39 | 27.19 |
| HG2405SD-135-RSP | E | 5 dBi, Wide Angle Spatial Diversity, 4ft. Dual RP SMA Plug Connectors | 39.99 | 36.79 | 33.59 | 30.39 | 27.19 |
| HG2405SD-135-RTP | E | 5 dBi, Wide Angle Spatial Diversity, 4ft. Dual RP TNC Plug Connectors | 39.99 | 36.79 | 33.59 | 30.39 | 27.19 |

Call for special connectors and cable lengths

| Item # | Style | Description | 1-9 | 10-24 | 25-99 | 100-249 | 250-499 |
|--------|-------|-------------|-----|-------|-------|---------|---------|
|--------|-------|-------------|-----|-------|-------|---------|---------|

3.5 GHz, 4.9 GHz, 5.1 GHz, 5.3 GHz, 5.4 GHz and 5.8 GHz Patch Antennas

L-com's extensive line of patch antennas that cover frequencies from 3.5 to 5.8 GHz are ideal for applications such as WiMAX and public safety. Several of the patch antennas are broadband/multi-band antennas that eliminate the need to purchase different antennas for each frequency being used. This simplifies installations since the same antenna can be used for a wide array of wireless applications.

✓RoHS 3.5 GHz Patch Antennas

| | | | | | | | |
|----------------------------|---|--|-------|-------|-------|-------|-------|
| HG3509P-NF | A | 8 dBi, 4in Square, 12in Pigtail with NF Connector | 39.99 | 35.99 | 31.99 | 27.99 | 23.99 |
| HG3514P-NF | A | 14 dBi, 8in Square, 12in Pigtail with NF Connector | 49.99 | 44.99 | 39.99 | 34.99 | 29.99 |

✓RoHS 4.9 GHz Patch Antennas

| | | | | | | | |
|-------------------------|---|---|-------|-------|-------|-------|-------|
| HG4953P | A | 8 dBi, 4in Square, Broadband, Integral SM Connector | 49.99 | 44.99 | 39.99 | 34.99 | 29.99 |
| HG4911P | A | 11 dBi, 4in Square, Integral SM Connector | 49.99 | 44.99 | 39.99 | 34.99 | 29.99 |

✓RoHS 5.3 GHz Patch Antennas

| | | | | | | | |
|-------------------------|---|---|-------|-------|-------|-------|-------|
| HG5311P | A | 11 dBi, 4in Square, Integral SM Connector | 49.99 | 44.99 | 39.99 | 34.99 | 29.99 |
|-------------------------|---|---|-------|-------|-------|-------|-------|

✓RoHS 5.4 GHz Patch Antennas

| | | | | | | | |
|-------------------------|---|---|-------|-------|-------|-------|-------|
| HG5411P | A | 11 dBi, 4in Square, Integral SM Connector | 49.99 | 47.99 | 45.99 | 42.49 | 37.49 |
| HG5419P | A | 19 dBi, 7in Square, Integral FM Connector | 49.99 | 47.49 | 44.99 | 42.49 | CALL |

✓RoHS 5.8 GHz Patch Antennas

| | | | | | | | |
|----------------------------|---|---|-------|-------|-------|-------|-------|
| HG5811P | A | 11 dBi, 4in Square, Integral SM Connector | 49.99 | 44.99 | 39.99 | 34.99 | 29.99 |
| HG5819P | A | 19 dBi, 7in Square, Integral FM Connector | 49.99 | 47.49 | 44.99 | 42.49 | CALL |
| HG5158P | A | 8 dBi, 4in Square, Broadband, Integral SF Connector | 49.99 | 44.99 | 39.99 | 34.99 | 29.99 |
| HG5158-23P | A | 23 dBi, 12in Square, Broadband, Integral NF Connector | 82.99 | 80.50 | 78.01 | 75.52 | 73.03 |

2.4 GHz Mobile Mount Antennas - Built for Demanding Mobile Applications

Our extensive line of magnetic mount and mast mount mobile Omnidirectional antennas are perfect for demanding mobile applications including law enforcement, construction vehicles, and mobile metering. Several styles are offered with many frequency and gain choices supporting IEEE 802.11b/g/n.

- All weather construction
- Bluetooth® and Wi-Fi
- RoHS compliant
- IEEE 802.11b/g/n
- Magnetic and mast mount options

✓RoHS Magnetic Mobile Mounts

| | | | | | | | |
|-----------------------------|---|---|-------|-------|-------|-------|-------|
| HMA6-RSP05 | B | RP-SMA Jack to RP-SMA Plug, 5ft 100-Series | 14.99 | 13.49 | 11.99 | 10.49 | CALL |
| HMA6-RSP10 | B | RP-SMA Jack to RP-SMA Plug, 10ft 100-Series | 19.99 | 17.99 | 15.99 | 13.99 | CALL |
| HMA6-RTP05 | B | RP-SMA Jack to RP-TNC Plug, 5ft 100-Series | 14.99 | 13.49 | 11.99 | 10.49 | CALL |
| HMA6-RTP10 | B | RP-SMA Jack to RP-TNC Plug, 10ft 100-Series | 19.99 | 17.99 | 15.99 | 13.99 | CALL |
| HMA1-NFA10 | C | NMO to N-Female, 10ft 195-Series | 19.95 | 17.95 | 15.96 | 13.96 | CALL |
| HMA1-NMA10 | C | NMO to N-Male, 10ft 195-Series | 19.95 | 17.95 | 15.96 | 13.96 | CALL |
| HMA1-RSPA10 | C | NMO to RP-SMA Plug, 10ft 195-Series | 19.95 | 17.95 | 15.96 | 13.96 | CALL |
| HMA1-RTPA10 | C | NMO to RP-TNC Plug, 10ft 195-Series | 21.95 | 19.75 | 17.56 | 15.36 | CALL |
| HMA3-NFA10 | D | N-Female to N-Female, 10ft 195-Series | 24.99 | 22.49 | 19.99 | 17.49 | 14.99 |
| HMA3-NMA10 | D | N-Female to N-Male, 10ft 195-Series | 24.99 | 22.49 | 19.99 | 17.49 | 14.99 |
| HMA3-RSPA10 | D | N-Female to RP-SMA Plug, 10ft 195-Series | 24.99 | 22.49 | 19.99 | 17.49 | 14.99 |
| HMA3-RTPA10 | D | N-Female to RP-TNC Plug, 10ft 195-Series | 24.99 | 22.49 | 19.99 | 17.49 | 14.99 |

✓RoHS 2.4 GHz Antennas with Magnetic Mobile Mounts

| | | | | | | | |
|---------------------------------|---|---|-------|-------|-------|-------|-------|
| HG2403MGU-NM | F | 3 dBi, Dual Band, 10ft Cable with NM Connector | 34.99 | 31.49 | 27.99 | 24.49 | 20.99 |
| HG2403MGU-RSP | F | 3 dBi, Dual Band, 10ft Cable with RP-SMA Connector | 39.99 | 35.99 | 31.99 | 27.99 | 23.99 |
| HG2403MGU-RTP | F | 3 dBi, Dual Band, 10ft Cable with RP-TNC Connector | 39.99 | 35.99 | 31.99 | 27.99 | 23.99 |
| HG2403MGURW-NM | G | 3 dBi, White Radome, 10ft Cable with NM Connector | 34.99 | 31.49 | 27.99 | 24.49 | 20.99 |
| HG2403MGURW-RSP | G | 3 dBi, White Radome, 10ft Cable with RP-SMA Connector | 39.99 | 35.99 | 31.99 | 27.99 | 23.99 |
| HG2403MGURW-RTP | G | 3 dBi, White Radome, 10ft Cable with RP-TNC Connector | 39.99 | 35.99 | 31.99 | 27.99 | 23.99 |
| HG2403MGURB-NM | G | 3 dBi, Black Radome, 10ft Cable with NM Connector | 34.99 | 31.49 | 27.99 | 24.49 | 20.99 |
| HG2403MGURB-RSP | G | 3 dBi, Black Radome, 10ft Cable with RP-SMA Connector | 39.99 | 35.99 | 31.99 | 27.99 | 23.99 |
| HG2403MGURB-RTP | G | 3 dBi, Black Radome, 10ft Cable with RP-TNC Connector | 39.99 | 35.99 | 31.99 | 27.99 | 23.99 |
| HG2405MGU-NM | E | 5 dBi, 10ft Cable with NM Connector | 39.99 | 38.39 | 36.79 | 33.99 | 29.99 |
| HG2405MGU-RSP | E | 5 dBi, 10ft Cable with RP-SMA Connector | 49.99 | 47.99 | 45.99 | 42.49 | 37.49 |
| HG2405MGU-RTP | E | 5 dBi, 10ft Cable with RP-TNC Connector | 49.99 | 47.99 | 45.99 | 42.49 | 37.49 |
| HG2409MGU-NF | I | 8.5 dBi, 10ft Cable with NF Connector | 64.99 | 61.09 | 57.19 | 53.29 | 49.39 |
| HG2409MGU-NM | I | 8.5 dBi, 10ft Cable with NM Connector | 64.99 | 61.09 | 57.19 | 53.29 | 49.39 |
| HG2409MGU-RSP | I | 8.5 dBi, 10ft Cable with RP-SMA Connector | 74.99 | 70.49 | 65.99 | 61.49 | 56.99 |

✓RoHS 2.4 GHz Mobile Mount Antennas

| | | | | | | | |
|-------------------------------|---|--|-------|-------|-------|-------|-------|
| HG2403U-NMO | F | 3 dBi, Dual Band, Integral NMO Connector | 29.99 | 26.99 | 23.99 | 20.99 | 17.99 |
| HG2403UR-NMOW | G | 3 dBi, White Radome, Integral NMO Connector | 29.99 | 26.99 | 23.99 | 20.99 | 17.99 |
| HG2403UR-NMOB | G | 3 dBi, Black Radome, Integral NMO Connector | 29.99 | 26.99 | 23.99 | 20.99 | 17.99 |
| HG2405U-NMO | E | 5 dBi, Integral NMO Connector | 19.99 | 17.99 | 15.99 | 13.99 | 11.99 |
| HG2405UR-NMO | H | 5 dBi, Black Radome, Flex-Base, Integral NMO Connector | 84.99 | 76.49 | 67.99 | 59.49 | 50.99 |
| HG2409U | I | 8.5 dBi, Integral NM Connector | 49.99 | 45.99 | 41.99 | 37.99 | 33.99 |



[HG3514P-NF](#) Shown with HGX-PMT08 window mount kit. See [L-com.com](#) for more mounting options.



Mounting: Magnetic mounting system is available for permanent installations.



Tip Custom Manufacturing

L-com is unique among most Wi-Fi antenna vendors by also being an antenna manufacturer. Being a manufacturer allows us to provide custom variations of all the antennas we manufacture in house or resell. In most cases we can ship out a large custom order in less than a week. Small custom orders are usually shipped on the same day they are received. L-com offers a broad range of antenna types covering 800 – 6000 MHz. Learn more at [www.L-com.com](#).



Informative e-mail newsletters

Our newsletters are packed with tips, tutorials, product info and downloads! [L-com.com/NewsletterSignUp](#)

Call for special connectors and cable lengths

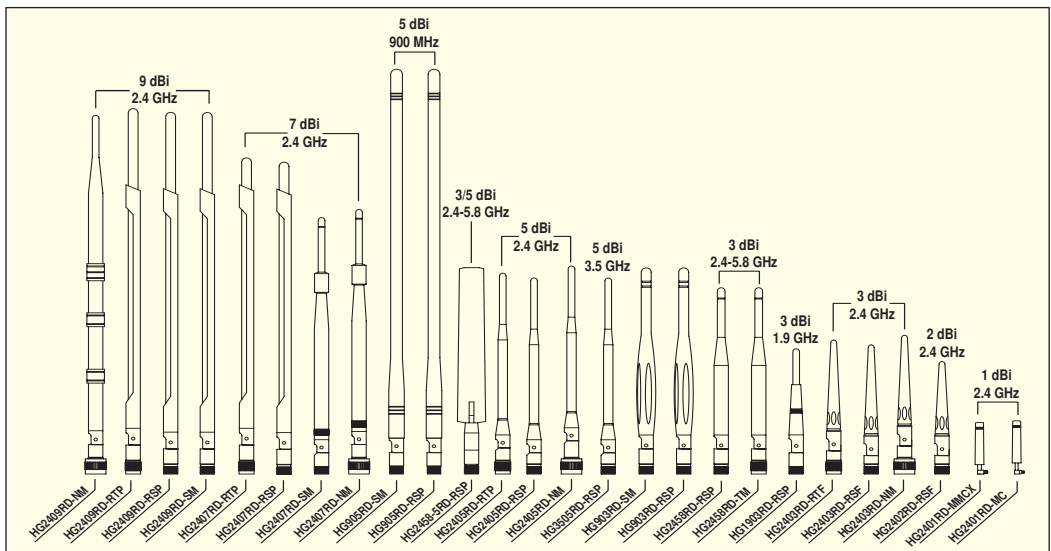
L-com Global Connectivity



HG2405RD-RTP
Shown on a Linksys® WAP54G wireless access point



| Item # | Style | Description | 1-9 | 10-24 | 25-99 | 100-249 | 250-499 |
|--|-------|---|-------|-------|-------|---------|---------|
| 900 MHz, 1.9 GHz, 2.4/5.8 GHz and 3.5 GHz Rubber Duck Antennas | | | | | | | |
| These high performance Omnidirectional rubber duck antennas provide broad coverage and multiple gain options. HyperLink® flexible rubber duck antennas feature tilt-and-swivel connectors allowing them to be used vertically, at a right angle, or any angle in-between. Suitable as a replacement RF antenna for radios, wireless video transmitters and receivers, as well as digital spread spectrum radios. | | | | | | | |
| ✓RoHS 900 MHz Rubber Duck Antennas | | | | | | | |
| HG903RD-RSP | B | 3 dBi, Integral Tilt/Swivel RP-SMA Connector | 10.99 | 9.89 | 8.79 | 7.69 | 6.59 |
| HG903RD-SM | B | 3 dBi, Integral Tilt/Swivel SM Connector | 10.99 | 9.89 | 8.79 | 7.69 | 6.59 |
| HG905RD-RSP | B | 5 dBi, Integral Tilt/Swivel RP-SMA Connector | 19.99 | 17.99 | 15.99 | 13.99 | 11.99 |
| HG905RD-SM | B | 5 dBi, Integral Tilt/Swivel SM Connector | 19.99 | 17.99 | 15.99 | 13.99 | 11.99 |
| ✓RoHS 1.9 GHz Rubber Duck Antenna | | | | | | | |
| HG1903RD-RSP | B | 3 dBi, Integral Tilt/Swivel RP-SMA Connector | 9.99 | 8.99 | 7.99 | 6.99 | 5.99 |
| ✓RoHS 2.4 GHz Rubber Duck Antennas | | | | | | | |
| HG2401RD-MMCX | C | 1 dBi, Integral Rt Angle Fixed Mount MMCX Connector | 4.99 | 4.79 | 4.59 | 4.24 | 3.74 |
| HG2401RD-MC | C | 1 dBi, Integral Rt Angle Fixed Mount MC Connector | 2.99 | 2.96 | 2.93 | 2.90 | 2.87 |
| HG2402RD-RSF | B | 2.2 dBi, Integral Tilt/Swivel RP-SMA Connector | 5.99 | 5.39 | 4.79 | 4.19 | 3.59 |
| HG2403RD-NM | B | 3 dBi, Integral Tilt/Swivel NM Connector | 7.99 | 7.19 | 6.39 | 5.59 | 4.79 |
| HG2403RD-RSF | B | 3 dBi, Integral Tilt/Swivel RP-SMA Connector | 7.99 | 7.19 | 6.39 | 5.59 | 4.79 |
| HG2403RD-RTP | B | 3 dBi, Integral Tilt/Swivel RP-TNC Connector | 7.99 | 7.19 | 6.39 | 5.59 | 4.79 |
| HG2405RD-NM | B | 5 dBi, Integral Tilt/Swivel NM Connector | 14.99 | 13.49 | 11.99 | 10.49 | 8.99 |
| HG2405RD-RSP | B | 5 dBi, Integral Tilt/Swivel RP-SMA Connector | 9.99 | 8.99 | 7.99 | 6.99 | 5.99 |
| HG2405RD-RTP | B | 5 dBi, Integral Tilt/Swivel RP-TNC Connector | 9.99 | 8.99 | 7.99 | 6.99 | 5.99 |
| HG2407RD-NM | B | 7 dBi, Integral Tilt/Swivel NM Connector | 14.99 | 13.49 | 11.99 | 10.49 | 8.99 |
| HG2407RD-RSP | B | 7 dBi, Integral Tilt/Swivel RP-SMA Connector | 12.99 | 11.69 | 10.39 | 9.09 | 7.79 |
| HG2407RD-RTP | B | 7 dBi, Integral Tilt/Swivel RP-TNC Connector | 12.99 | 11.69 | 10.39 | 9.09 | 7.79 |
| HG2407RD-SM | B | 7 dBi, Integral Tilt/Swivel SM Connector | 14.99 | 13.49 | 11.99 | 10.49 | 8.99 |
| HG2409RD-NM | B | 9 dBi, Integral Tilt/Swivel NM Connector | 22.99 | 20.69 | 18.39 | 16.09 | 13.79 |
| HG2409RD-RSP | B | 9 dBi, Integral Tilt/Swivel RP-SMA Connector | 18.99 | 17.09 | 15.19 | 13.29 | 11.39 |
| HG2409RD-RTP | B | 9 dBi, Integral Tilt/Swivel RP-TNC Connector | 18.99 | 17.09 | 15.19 | 13.29 | 11.39 |
| HG2409RD-SM | B | 9 dBi, Integral Tilt/Swivel SM Connector | 18.99 | 17.09 | 15.19 | 13.29 | 11.39 |
| ✓RoHS 3.5 GHz Rubber Duck Antenna | | | | | | | |
| HG3505RD-RSP | B | 5 dBi, Integral Tilt/Swivel RP-SMA Connector | 14.99 | 13.49 | 11.99 | 10.49 | 8.99 |
| ✓RoHS 2.4/5.8 GHz Multi-Band Rubber Duck Antennas | | | | | | | |
| HG2458-5RD-RSP | A | 3/5 dBi, Integral Tilt/Swivel RP-SMA Connector | 16.99 | 15.29 | 13.59 | 11.89 | 10.19 |
| HG2458RD-RSP | B | 3 dBi, Integral Tilt/Swivel RP-SMA Connector | 12.99 | 11.69 | 10.39 | 9.09 | 7.79 |
| HG2458RD-SM | B | 3 dBi, Integral Tilt/Swivel SM Connector | 12.99 | 11.69 | 10.39 | 9.09 | 7.79 |
| HG2458RD-TM | B | 3 dBi, Integral Tilt/Swivel TM Connector | 6.49 | 6.10 | 5.71 | 5.32 | 4.93 |
| 1.9 GHz, 2.4 GHz Rubber Duck Desktop Mobile Antennas | | | | | | | |
| L-com's Omnidirectional rubber duck wireless LAN antennas provide broad coverage and 3-9 dBi gain. These magnetic mount antennas feature a coaxial sleeve design with an Omnidirectional pattern. These antennas were designed for IEEE 802.11b/g/n wireless LANs and 1.9 GHz cellular PCS radio applications. Mobile applications for these antennas include service vehicles, public transportation, mining vehicles, as well as numerous other commercial and industrial applications where mobility is required. The magnetic base is suitable for affixing to vehicles or other metal surfaces as well as sitting on a tabletop or shelf. | | | | | | | |
| ✓RoHS 1.9 GHz Rubber Duck Antennas with Magnetic Mount | | | | | | | |
| HG1903MGRD-SM | D | 3 dBi, 5ft Cable with SM Connector | 19.99 | 19.39 | 18.79 | 18.19 | CALL |
| HG1903MGRD-SNP |) | 3 dBi, 5ft Cable with SMA-Nano Connector | 19.99 | 19.39 | 18.79 | 18.19 | CALL |
| ✓RoHS 2.4 GHz Rubber Duck Antennas with Magnetic Mount | | | | | | | |
| HG2407MGRD-RSP | E | 7 dBi, 5ft Cable with RP-SMA Connector | 19.99 | 18.99 | 17.99 | 16.99 | CALL |
| HG2407MGRD-RTP | E | 7 dBi, 5ft Cable with RP-TNC Connector | 19.99 | 18.99 | 17.99 | 16.99 | CALL |
| HG2409MGRD-RSP | E | 9 dBi, 5ft Cable with RP-SMA Connector | 25.99 | 24.43 | 22.87 | 21.31 | 19.75 |
| HG2409MGRD-RTP | E | 9 dBi, 5ft Cable with RP-TNC Connector | 25.99 | 24.43 | 22.87 | 21.31 | 19.75 |
| ✓RoHS 2.4/5.8 GHz Multi-Band Rubber Duck Antennas with Magnetic Mount | | | | | | | |
| HG2458MGRD-RSP | F | 3/5 dBi, 5ft Cable with RP-SMA Connector | 24.99 | 23.99 | 22.99 | 21.24 | 18.74 |
| HG2458MGRD-RTP | F | 3/5 dBi, 5ft Cable with RP-TNC Connector | 24.99 | 23.99 | 22.99 | 21.24 | 18.74 |



"As a technical trainer and computer networking consultant, staying current on all the latest technologies is a must. When I was writing the CWTS Study Guide, L-com, a leading source for WLAN Antennas, Lightning Protectors and other accessories provided highly technical, yet easy-to-understand information for use in my book." - Robert Bartz, Eight-O-Two Technology Solutions, LLC, Colorado

| Item # | Style | Description | 1-4 | 5-9 | 10-24 | 25+ |
|--------|-------|-------------|-----|-----|-------|-----|
|--------|-------|-------------|-----|-----|-------|-----|

900 MHz, 2.4 GHz, 5.4 GHz and 5.8 GHz Sectorial Omnidirectional Array Antennas

L-com's sector antennas are designed for Cell Site installations and include a variety of gain, frequency and radiation patterns. These Wi-Fi antennas feature our unique heavy-duty mounting systems that allow installation from level to over 20 degrees down-tilt. In addition, 90, 120 and 180 degree arrays are available supporting a wide range of applications. These antennas feature stainless steel construction for all-weather operation.

RoHS 900 MHz Sectorial Array Antennas

| | | | | | | |
|-----------------------------|---|--|--------|--------|--------|--------|
| HK913-120 | A | 13 dBi, Multi-Feed, Incl. (3) 120° Antenna with Mounting Array | 765.00 | 726.75 | 688.50 | 650.25 |
| HK913-120NF | A | 13 dBi, Single-Feed, Incl. (3) 120° Antenna w/Mounting Array, Splitter, 3 Cables | 865.00 | 821.75 | 778.50 | 735.25 |

RoHS 2.4 GHz Sectorial Array Antennas

| | | | | | | |
|-------------------------------|---|---|---------|---------|---------|---------|
| HK2414-090 | A | 14 dBi, Multi-Feed, Incl. (4) 90° Antenna w/Mounting Array | 575.00 | 517.50 | 460.00 | 402.50 |
| HK2414-090NF | A | 14 dBi, Single-Feed, Incl. (4) 90° Antenna w/Mounting Array, Splitter, 4 Cables | 650.00 | 585.00 | 520.00 | 455.00 |
| HK2414-120 | A | 14 dBi, Multi-Feed, Incl. (3) 120° Antenna w/Mounting Array | 550.00 | 495.00 | 440.00 | 385.00 |
| HK2414-120NF | A | 14 dBi, Single-Feed, Incl. (3) 120° Antenna w/Mounting Array, Splitter, 3 Cables | 650.00 | 585.00 | 520.00 | 455.00 |
| HK2414H-090 | A | 14 dBi, Multi-Feed, Incl. (4) 90° H-Pol Antenna w/Mounting Array | 750.00 | 675.00 | 600.00 | 525.00 |
| HK2414H-090NF | A | 14 dBi, Single-Feed, Incl. (4) 90° H-Pol Antenna w/Mounting Array, Splitter, 4 Cables | 850.00 | 765.00 | 680.00 | 595.00 |
| HK2415-180 | B | 15 dBi, Multi-Feed, Incl. (2) 180° Antenna w/Mounting Array | 1100.00 | 990.00 | 880.00 | 770.00 |
| HK2415-180NF | B | 15 dBi, Single-Feed, Incl. (2) 180° Antenna w/Mounting Array, Splitter, 2 Cables | 1200.00 | 1080.00 | 960.00 | 840.00 |
| HK2417-090 | A | 17 dBi, Multi-Feed, Incl. (4) 90° Antenna w/Mounting Array | 840.00 | 756.00 | 672.00 | 588.00 |
| HK2417-090NF | A | 17 dBi, Single-Feed, Incl. (4) 90° Antenna w/Mounting Array, Splitter, 4 Cables | 960.00 | 864.00 | 768.00 | 672.00 |
| HK2417-120 | A | 17 dBi, Multi-Feed, Incl. (3) 120° Antenna w/Mounting Array | 650.00 | 585.00 | 520.00 | 455.00 |
| HK2417-120NF | A | 17 dBi, Single-Feed, Incl. (3) 120° Antenna w/Mounting Array, Splitter, 3 Cables | 775.00 | 697.50 | 620.00 | 542.50 |
| HK2420-090 | A | 20 dBi, Multi-Feed, Incl. (4) 90° Antenna w/Mounting Array | 1750.00 | 1575.00 | 1400.00 | 1225.00 |
| HK2420-090NF | A | 20 dBi, Single-Feed, Incl. (4) 90° Antenna w/Mounting Array, Splitter, 4 Cables | 1900.00 | 1710.00 | 1520.00 | 1330.00 |
| HK2420-120 | A | 20 dBi, Multi-Feed, Incl. (3) 120° Antenna w/Mounting Array | 1250.00 | 1125.00 | 1000.00 | 875.00 |
| HK2420-120NF | A | 20 dBi, Single-Feed, Incl. (3) 120° Antenna w/Mounting Array, Splitter, 3 Cables | 1350.00 | 1215.00 | 1080.00 | 945.00 |

RoHS 5.4 GHz Sectorial Array Antennas

| | | | | | | |
|------------------------------|---|--|--------|--------|--------|--------|
| HK5417-090 | C | 17 dBi, Multi-Feed, Incl. (4) 90° Antenna with Mounting Array | 699.99 | 629.99 | 559.99 | 489.99 |
| HK5417-090NF | C | 17 dBi, Single-Feed, Incl. (4) 90° Antenna with Mounting Array, Splitter, 4 Cables | 899.99 | 809.99 | 719.99 | 629.99 |

RoHS 5.8 GHz Sectorial Array Antennas

| | | | | | | |
|------------------------------|---|--|--------|--------|--------|--------|
| HK5817-090 | C | 17 dBi, Multi-Feed, Incl. (4) 90° Antenna with Mounting Array | 699.99 | 629.99 | 559.99 | 489.99 |
| HK5817-090NF | C | 17 dBi, Single-Feed, Incl. (4) 90° Antenna with Mounting Array, Splitter, 4 Cables | 899.99 | 809.99 | 719.99 | 629.99 |

| Item # | Style | Description | 1-9 | 10-24 | 25-99 | 100-249 | 250-499 |
|--------|-------|-------------|-----|-------|-------|---------|---------|
|--------|-------|-------------|-----|-------|-------|---------|---------|

900 MHz, 2.4 GHz, 3.5 GHz, 5.4 GHz, 5.8 GHz and Multi-Band 2.4/5.8 GHz Sectorial Panel Antennas

L-com's sectorial panel antennas are available in multiple frequencies, gain and 90-180 degrees. They can be used stand alone or in circular groups to maximize coverage and feature heavy-duty plastic radome for all-weather operation, with mounting systems that adjust to pinpoint direction.

RoHS 900 MHz Sectorial Panel Antenna

| | | | | | | | |
|----------------------------|---|-------------------------------------|--------|--------|--------|--------|--------|
| HG913P-120 | D | 13 dBi, 120°, Integral NF Connector | 249.99 | 237.49 | 224.99 | 212.49 | 199.99 |
|----------------------------|---|-------------------------------------|--------|--------|--------|--------|--------|

RoHS 2.4 GHz Sectorial Panel Antennas

| | | | | | | | |
|----------------------------------|---|--|--------|--------|--------|--------|--------|
| HG2414SP-090 | D | 14 dBi, 90°, Integral NF Connector ANATEL Certified | 149.99 | 137.99 | 125.99 | 113.99 | 101.99 |
| HG2414SP-120 | D | 14 dBi, 120°, Integral NF Connector | 149.99 | 137.99 | 125.99 | 113.99 | 101.99 |
| HG2414HSP-090 | D | 14 dBi, 90°, Horizontal Polarized, Integral NF Connector | 149.99 | 137.99 | 125.99 | 113.99 | 101.99 |
| HG2414HSP-090-AN | D | 14 dBi, 90°, Horizontal Polarized, NF Connector ANATEL Certified | 159.99 | 147.19 | 134.39 | 121.59 | 108.79 |
| HG2414DP-090 | D | 14 dBi, 90°, Dual Polarized, 2 Integral NF Connectors | 179.99 | 169.19 | 158.39 | 147.59 | 136.79 |
| HG2415P-180 | E | 15 dBi, 180°, Integral NF Connector | 479.99 | 431.99 | 383.99 | 335.99 | 287.99 |
| HG2417P-090 | D | 17 dBi, 90°, Integral NF Connector ANATEL Certified | 172.99 | 166.07 | 159.15 | 147.04 | 129.74 |
| HG2417P-120 | D | 17 dBi, 120°, Integral NF Connector | 172.99 | 166.07 | 159.15 | 147.04 | 129.74 |
| HG2420P-090 | D | 20 dBi, 90°, Integral NF Connector | 399.95 | 359.95 | 319.96 | 279.96 | 239.97 |
| HG2420P-120 | D | 20 dBi, 120°, Integral NF Connector | 399.95 | 359.95 | 319.96 | 279.96 | 239.97 |

RoHS 3.5 GHz Sectorial Panel Antenna

| | | | | | | | |
|-----------------------------|---|-------------------------------------|--------|--------|--------|--------|--------|
| HG3515P-120 | D | 15 dBi, 120°, Integral NF Connector | 199.99 | 183.99 | 167.99 | 151.99 | 135.99 |
|-----------------------------|---|-------------------------------------|--------|--------|--------|--------|--------|

RoHS 5.4 GHz Sectorial Panel Antenna

| | | | | | | | |
|-----------------------------|---|------------------------------------|--------|--------|--------|--------|--------|
| HG5417P-090 | D | 17 dBi, 90°, Integral NF Connector | 149.99 | 143.99 | 137.99 | 127.49 | 112.49 |
|-----------------------------|---|------------------------------------|--------|--------|--------|--------|--------|

RoHS 5.8 GHz Sectorial Panel Antenna

| | | | | | | | |
|-----------------------------|---|------------------------------------|--------|--------|--------|--------|--------|
| HG5817P-090 | D | 17 dBi, 90°, Integral NF Connector | 152.99 | 140.75 | 128.51 | 116.27 | 104.03 |
|-----------------------------|---|------------------------------------|--------|--------|--------|--------|--------|

RoHS 2.4/5.8 GHz Sectorial Panel Antenna

| | | | | | | | |
|--------------------------------|---|---------------------------------------|--------|--------|--------|--------|--------|
| HG2458-14P-090 |) | 14 dBi, 90°, 2 Integral NF Connectors | 189.99 | 174.79 | 159.59 | 144.39 | 129.19 |
|--------------------------------|---|---------------------------------------|--------|--------|--------|--------|--------|

RoHS Mounting Brackets for Antennas, Amplifiers and Surge Protectors

L-com offers an extensive line of mounting bracket options for its antennas, amplifiers, and surge protectors. Options include wall mount, window mount, mast mount and more! Visit us online at www.L-com.com for complete bracket dimensions and specifications.

| | | | | | | |
|---------------------------------|---|--------|--------|--------|--------|-------|
| HGX-LPMOUNT01 | ALQ2-NMNF Surge Protector Mounting Bracket | 4.99 | 4.49 | 3.99 | 3.49 | 2.99 |
| HGX-PMT02 | Indoor Antenna Mounting Kit, Small Metal Tilt & Swivel | 9.99 | 8.99 | 7.99 | 6.99 | 5.99 |
| HGX-PMT03 | Indoor Antenna Mounting Kit, Medium Plastic Tilt & Swivel | 11.99 | 10.79 | 9.59 | 8.39 | 7.19 |
| HGX-PMT04 | Large Metal Tilt & Swivel Mounting Bracket for Wall or Mast Mounting | 19.99 | 17.99 | 15.99 | 13.99 | 11.99 |
| HGX-PMT06 | 60° Tilt & Swivel Mounting Kit for Mounting to 1-1/4" to 2" Dia. Masts | 8.99 | 8.09 | 7.19 | 6.29 | 5.39 |
| HGX-PMT07 | Stationary Mounting Kit for Mounting to 1-1/4" to 2" Dia. Masts | 5.99 | 5.39 | 4.79 | 4.19 | 3.59 |
| HGX-PMT08 | Suction Cup Window Mounting Kit for Select HyperLink Antennas | 9.99 | 8.99 | 7.99 | 6.99 | CALL |
| HGX-PMT11 | Heavy Duty Stationary Mast Mounting Kit for Mtg. to 1-1/4" to 2" Dia. Masts | 10.99 | 9.89 | 8.79 | 7.69 | 6.59 |
| HGX-PMT14 | Mast Mount Kit for Outdoor Filters/Splitters 1-1/4" to 2" Dia. Masts | 12.99 | 11.69 | 10.39 | 9.09 | CALL |
| HGX-PMT15 | Indoor Antenna Mounting Kit- Compact Metal Tilt & Swivel | 9.99 | 8.99 | 7.99 | 6.99 | 5.99 |
| HGX-UMOUNT | Powder Coated Galvanized Steel "DSS-style" Arm-Outdoor Wall Mtg. 21 in. | 14.99 | 14.39 | 13.79 | 12.74 | 11.24 |
| HGX-UMOUNT-10PK | Powder Coated Galvanized Steel "DSS-style" Arm-Outdoor Wall Mtg. 10 Pack | 119.99 | 115.19 | 110.39 | 101.99 | 89.99 |
| HGX-UMOUNT01 | Powder Coated Galvanized Steel "DSS-style" Arm-Outdoor Wall Mtg. 26.7 in. | 15.99 | 15.35 | 14.71 | 13.59 | 11.99 |
| HGX-UMOUNT01-PK | Powder Coated Galvanized Steel "DSS-style" Arm-Outdoor Wall Mtg. 10 Pack | 129.99 | 124.79 | 119.59 | 110.49 | 97.49 |
| HGX-UMOUNT02 | Ceiling/Wall Mount for HyperLink 4.5"sq and 8.5"sq. Patch Antennas | 14.99 | 13.49 | 11.99 | 10.49 | 8.99 |
| HGX-UMOUNT03 | Universal Antenna Fixed Corner Mtg. Bracket, Extension Kit, Hardware | 37.99 | 34.19 | 30.39 | 26.59 | 22.79 |
| HGX-UMOUNT04 | Universal Corner Mounting Bracket | 24.99 | 22.49 | 19.99 | 17.49 | CALL |



[HK2417-090NF](#)

STYLE

A

[HK2415-180NF](#)

STYLE

B



[HK5417-090NF](#)

STYLE

C



[HG2415P-180](#)

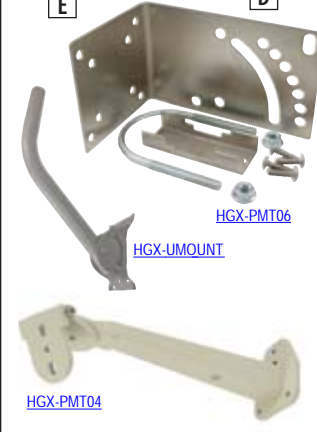
STYLE

E

[HG2414DP-090](#)

STYLE

D



[HGX-PMT06](#)

[HGX-UMOUNT](#)

[HGX-PMT04](#)

We answer your technical questions

See a complete list of frequently asked questions at L-com.com/FAQS

Shop at L-com.com or call 1-800-343-1455 • E-mail: sales@L-com.com • Fax: 978-689-9484