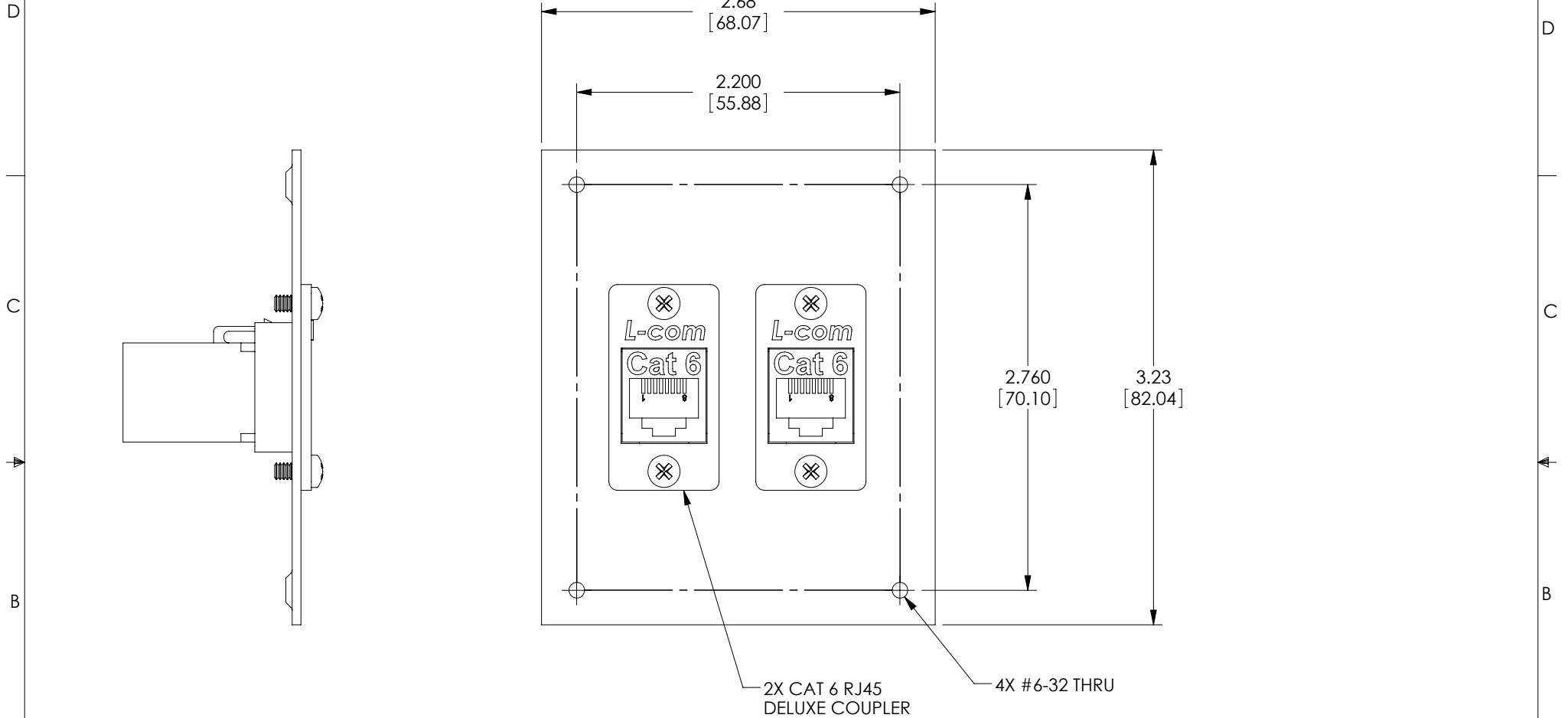


THE INFORMATION CONTAINED IN THIS DRAWING IS THE SOLE PROPERTY OF L-COM, INC. ANY REPRODUCTION IN PART OR WHOLE WITHOUT THE WRITTEN PERMISSION OF L-COM, INC. IS PROHIBITED.

| REVISIONS |                 |         |           |
|-----------|-----------------|---------|-----------|
| REV       | DESCRIPTION     | DATE    | APPROVED  |
| A         | INITIAL RELEASE | 9/16/11 | D.GRIFFIN |
|           |                 |         |           |
|           |                 |         |           |



**NOTES:**

1. PANEL MATERIAL: .06 THICK COLD ROLLED STEEL.
2. PANEL FINISH: FLAT BLACK POWDER COAT.
3. PANEL IS SHIPPED WITH (4) #6-32 MOUNTING SCREWS (NOT SHOWN).
4. PANEL IS INDIVIDUALLY PACKAGED IN ACCORDANCE WITH L-COM SPEC. PS-0031

|   |  |                            |   |  |
|---|--|----------------------------|---|--|
| UNLESS OTHERWISE SPECIFIED, DIMENSIONS ARE IN INCHES [mm]<br>OVERALL CABLE LENGTH TOLERANCE:<br>≤12 [305] = +1 [25] / -0<br>>12 [305] ≤60 [1524] = +2 [51] / -0<br>>60 [1524] ≤120 [3048] = +4 [102] / -0<br>>120 [3048] ≤300 [7620] = +6 [152] / -0<br>>300 [7620] = +3% / -0% | APPROVALS  | DATE                       |   | 45 BEECHWOOD DRIVE<br>NORTH ANDOVER, MA<br>01845 |
|   | DRAWN BY<br>D. CASTRO                                    | 9/14/11                    |   |  |
| ALL OTHER DIMENSIONAL TOLERANCES:<br>.X = ±.2<br>.XX = ±.02<br>.XXX = ±.005   | CHECKED BY<br>D. FRISIELLO                               | 9/15/11                    | CATEGORY<br><b>MODULAR</b>                                |  |
|   | APPROVED BY<br>M. MARTINEZ                               | 9/15/11                    | PRODUCT DESCRIPTION<br><b>USP SUB-PNL/2 CAT6 CPLR BLK</b> |  |
| PROJECTION<br>  | CONFIGURATION DETAILS OF UNDIMENSIONED FEATURES MAY VARY | COLOR VARIATIONS MAY OCCUR | SIZE<br><b>A</b>  | FSCM NO.<br><b>43321</b>                         |
|   |  |                            | DWG. NO.<br><b>USP2ECF-C6B</b>                            | REV.<br><b>A</b>                                 |
|   |  |                            | SCALE: NONE   | CAD FILE: USP2ECF-C6B.SLDDRW                     |
|   |  |                            |   | SHEET 1 OF 1                                     |