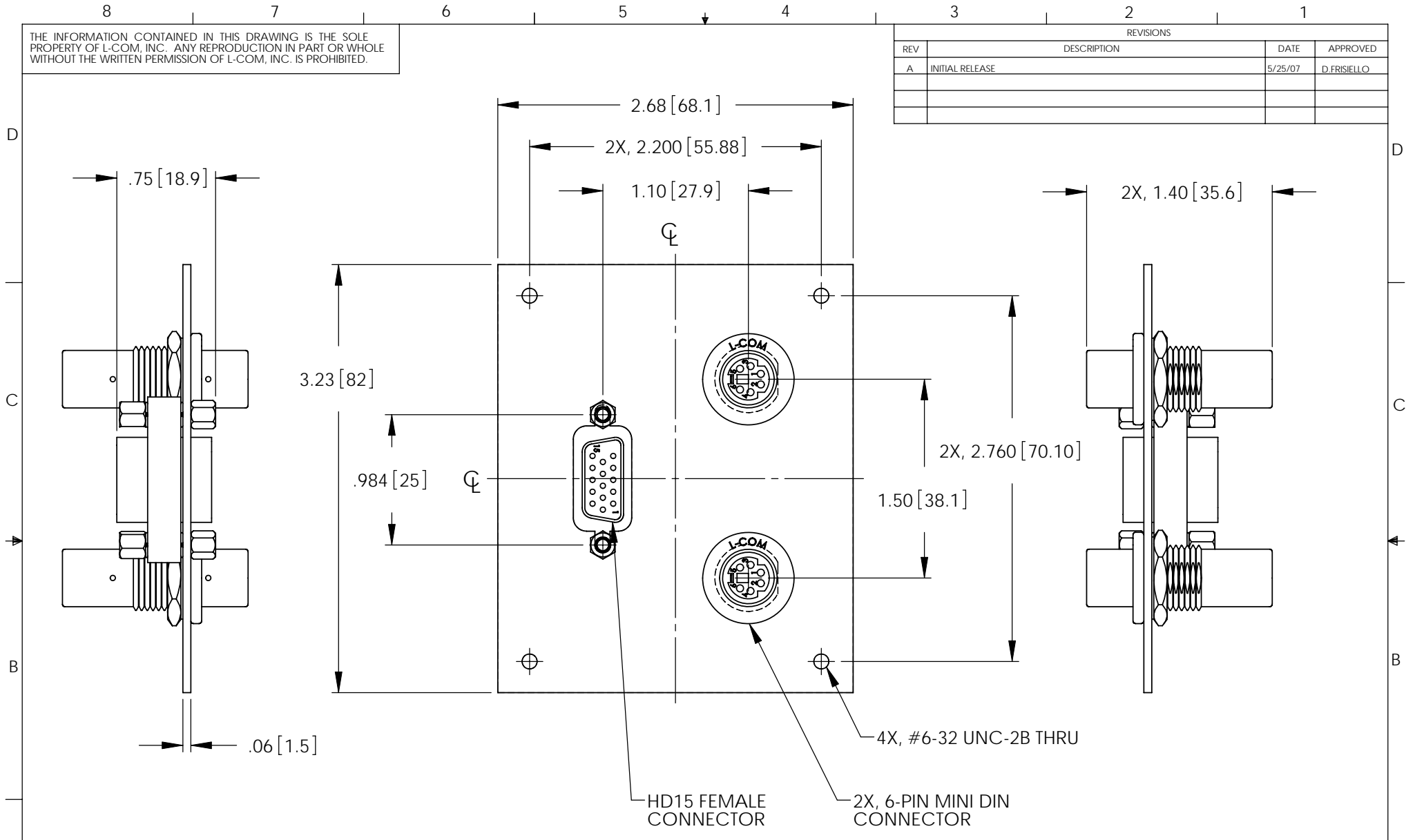


THE INFORMATION CONTAINED IN THIS DRAWING IS THE SOLE PROPERTY OF L-COM, INC. ANY REPRODUCTION IN PART OR WHOLE WITHOUT THE WRITTEN PERMISSION OF L-COM, INC. IS PROHIBITED.

REVISIONS			
REV	DESCRIPTION	DATE	APPROVED
A	INITIAL RELEASE	5/25/07	D.FRISIELLO

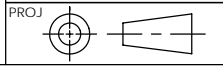


NOTES:

1. PANEL MATERIAL: .06 [1.5] THK COLD ROLLED STEEL.
2. PANEL FINISH: FLAT BLACK POWDER COAT.
3. KIT CONTAINS 4, #6-32 UNC SCREWS.
4. ALL DIMENSIONS SHOWN ARE FOR REFERENCE ONLY.

DIMENSIONS ARE IN INCHES [mm]
 UNLESS OTHERWISE SPECIFIED,
 TOLERANCES TO BE:
 .X ± .1 [2.5] ANGLES ± 2°
 .XX ± .01 [25]
 .XXX ± .005 [13]
 OVERALL CABLE LENGTH TOL:
 ≤ 60 [1524] +3 [76.2] / - 0
 > 60 [1524] +5% / -0%

APPROVALS	DATE
DRAWN BY D.FRISIELLO	5/24/07
CHECKED BY P.McNEIL	5/24/07
APPROVED BY P.McNEIL	5/24/07



CONFIGURATION DETAILS OF
 UNDIMENSIONED FEATURES
 MAY VARY

L-com 45 BEECHWOOD DRIVE
 CONNECTIVITY PRODUCTS NORTH ANDOVER, MA
 01845

CATEGORY	MONITOR/VIDEO		
PRODUCT DESCRIPTION	SUB PANEL, KVMB		
SIZE	FSCM NO.	DWG. NO.	REV.
A	43321	USP-KVMB	A
SCALE: NONE		CAD FILE: USP-KVMB.SLDDRW	SHEET 1 OF 1