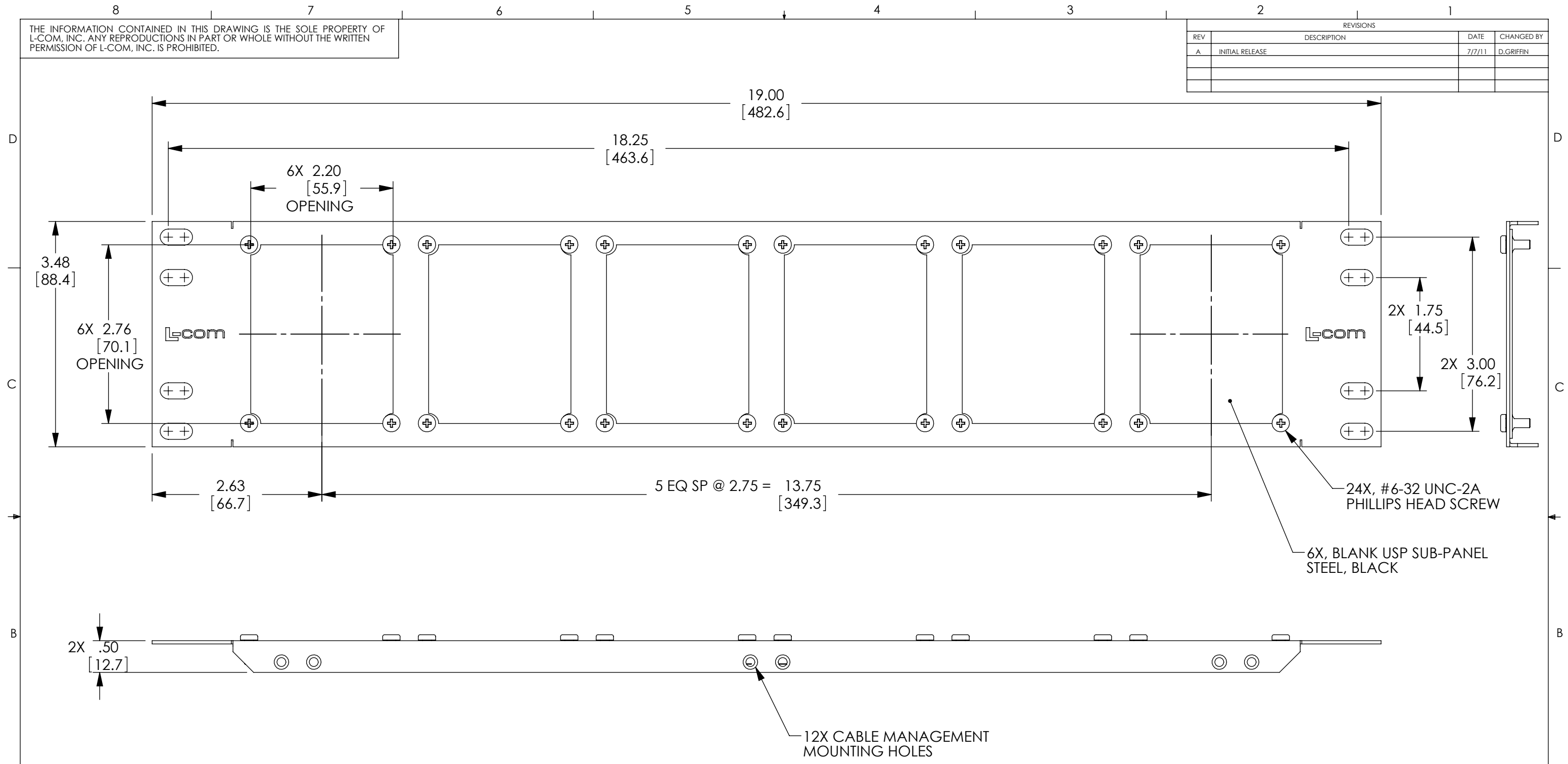


THE INFORMATION CONTAINED IN THIS DRAWING IS THE SOLE PROPERTY OF L-COM, INC. ANY REPRODUCTIONS IN PART OR WHOLE WITHOUT THE WRITTEN PERMISSION OF L-COM, INC. IS PROHIBITED.

REVISIONS			
REV	DESCRIPTION	DATE	CHANGED BY
A	INITIAL RELEASE	7/7/11	D.GRIFFIN



- NOTES:**
1. MATERIAL: .06 THICK COLD ROLLED STEEL.
  2. PANEL FINISH: FLAT BLACK POWDER COAT.
  3. SILKSCREEN COLOR: WHITE.
  4. PANEL IS SHIPPED WITH 6X SUB-PANELS AND HARDWARE NOT ASSEMBLED.
  5. PANEL SHALL BE PACKAGED IN ACCORDANCE WITH L-COM SPECIFICATION PS-0014.

**RoHS Compliant** ✓

UNLESS OTHERWISE SPECIFIED, DIMENSIONS ARE IN INCHES [mm]	APPROVALS	DATE	Global Connectivity 45 BEECHWOOD DRIVE NORTH ANDOVER, MA 01845
	DRAWN BY D. CASTRO	7/6/11	
	CHECKED BY M. MARTINEZ	7/6/11	
	APPROVED BY M. MARTINEZ	7/6/11	
DIMENSIONAL TOLERANCES: .X = ±.1 .XX = ±.02 .XXX = ±.005	CONFIGURATION DETAILS OF UNDIMENSIONED FEATURES MAY VARY		CATEGORY RACK PANEL
ANGULAR TOLERANCES: ALL = ± 1°	COLOR VARIATIONS MAY OCCUR		PRODUCT DESCRIPTION 3.5"X19" PANEL KIT W/6 USP-STL
PROJECTION	SIZE <b>B</b>	FSCM NO. <b>43321</b>	DWG. NO. UPR-S-KIT
	SCALE: 1:1	CAD FILE: UPR-S-KIT.SLDRW	REV. <b>A</b>