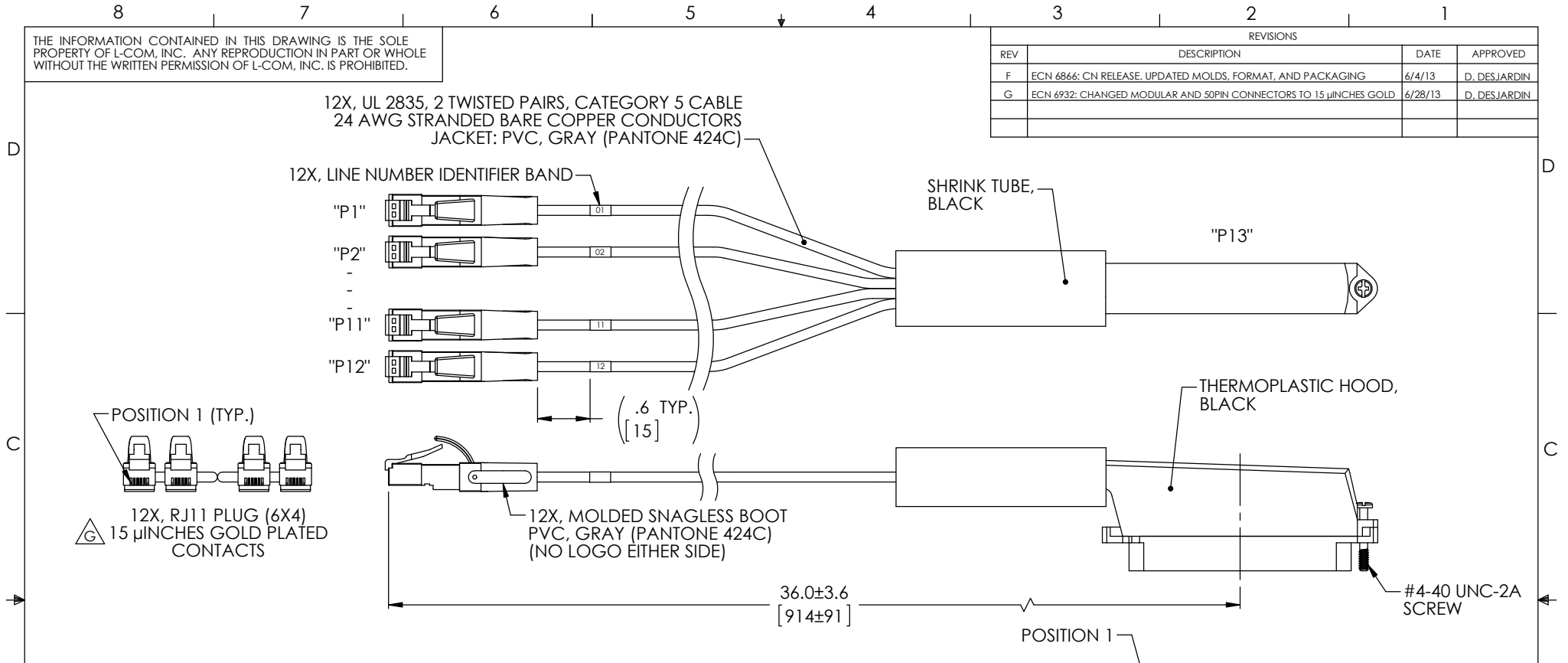


THE INFORMATION CONTAINED IN THIS DRAWING IS THE SOLE PROPERTY OF L-COM, INC. ANY REPRODUCTION IN PART OR WHOLE WITHOUT THE WRITTEN PERMISSION OF L-COM, INC. IS PROHIBITED.

REVISIONS			
REV	DESCRIPTION	DATE	APPROVED
F	ECN 6866: CN RELEASE, UPDATED MOLDS, FORMAT, AND PACKAGING	6/4/13	D_DESJARDIN
G	ECN 6932: CHANGED MODULAR AND 50PIN CONNECTORS TO 15 μINCHES GOLD	6/28/13	D_DESJARDIN



WIRING MAP

RJ11	PIN	PAIR	"P13"	RJ11	PIN	PAIR	"P13"	RJ11	PIN	PAIR	"P13"
"P1"	4	PAIR 1	26	"P5"	4	PAIR 1	34	"P9"	4	PAIR 1	42
	3		1		3		9		3		17
	2	PAIR 2	27		2	PAIR 2	35		2	PAIR 2	43
	5		2		5		10		5		18
"P2"	4	PAIR 1	28	"P6"	4	PAIR 1	36	"P10"	4	PAIR 1	44
	3		3		3		11		3		19
	2	PAIR 2	29		2	PAIR 2	37		2	PAIR 2	45
	5		4		5		12		5		20
"P3"	4	PAIR 1	30	"P7"	4	PAIR 1	38	"P11"	4	PAIR 1	46
	3		5		3		13		3		21
	2	PAIR 2	31		2	PAIR 2	39		2	PAIR 2	47
	5		6		5		14		5		22
"P4"	4	PAIR 1	32	"P8"	4	PAIR 1	40	"P12"	4	PAIR 1	48
	3		7		3		15		3		23
	2	PAIR 2	33		2	PAIR 2	41		2	PAIR 2	49
	5		8		5		16		5		24

NO CONNECTION TO PINS 25 AND 50 ON "P13" (TELCO CONNECTOR)

NOTES:

1. CABLE ASSEMBLY SHALL BE TESTED FOR CONTINUITY.
2. CABLE ASSEMBLY SHALL BE INDIVIDUALLY PACKAGED IN ACCORDANCE WITH L-COM SPECIFICATION PS-0031.

REGULATORY COMPLIANCE:  
ROHS, CE

UNLESS OTHERWISE SPECIFIED, DIMENSIONS ARE IN INCHES [mm] OVERALL CABLE LENGTH TOLERANCE: ≤12 [305] = +1 [25] / -0 >12 [305] ≤60 [1524] = +2 [51] / -0 >60 [1524] ≤120 [3048] = +4 [102] / -0 >120 [3048] ≤300 [7620] = +6 [152] / -0 >300 [7620] = +5% / -0%	APPROVALS	DATE		45 BEECHWOOD DRIVE NORTH ANDOVER, MA 01845
	DRAWN BY MCCORMICK	03/05/02		
ALL OTHER DIMENSIONAL TOLERANCES: .X = ±.2 [5.08] .XX = ±.02 [1.51] .XXX = ±.005 [1.13]	CHECKED BY D.PARHAM	03/05/02	CATEGORY TELECOM/MODULAR	
	APPROVED BY R CARRICK	03/05/02	PRODUCT DESCRIPTION CABLE CAT 3 CN50M/12 (6X4)	
PROJECTION 	COLOR VARIATIONS MAY OCCUR	SIZE <b>A</b>	FSCM NO. <b>43321</b>	DWG. NO. <b>TDC50M64</b>
		SCALE: NONE	CAD FILE: TDC50M64.SLDRW	SHEET 1 OF 1