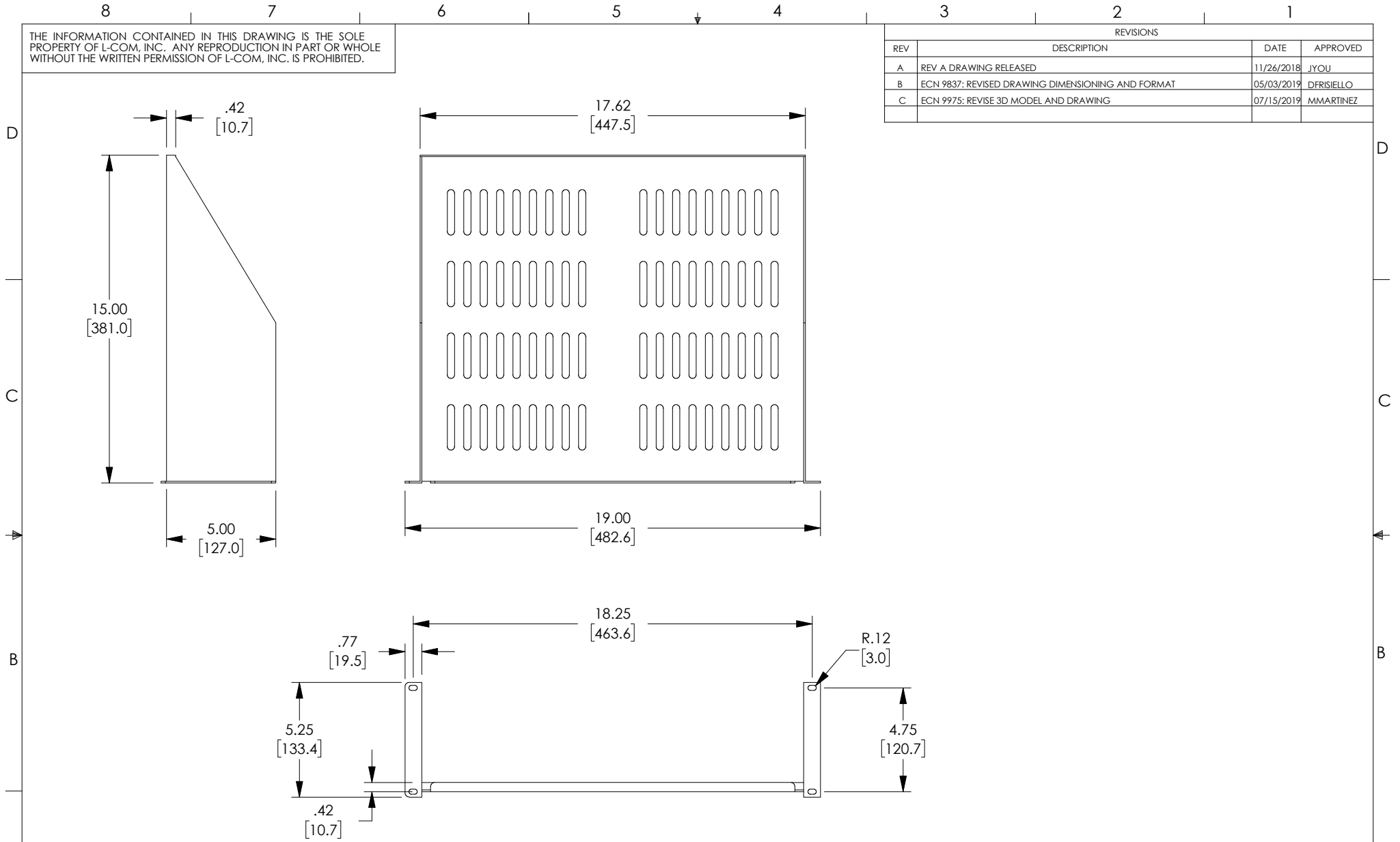


THE INFORMATION CONTAINED IN THIS DRAWING IS THE SOLE PROPERTY OF L-COM, INC. ANY REPRODUCTION IN PART OR WHOLE WITHOUT THE WRITTEN PERMISSION OF L-COM, INC. IS PROHIBITED.

REVISIONS			
REV	DESCRIPTION	DATE	APPROVED
A	REV A DRAWING RELEASED	11/26/2018	JYOU
B	ECN 9837: REVISED DRAWING DIMENSIONING AND FORMAT	05/03/2019	DFRISIELLO
C	ECN 9975: REVISE 3D MODEL AND DRAWING	07/15/2019	MMARTINEZ



NOTES:
1. ALL DIMENSIONS ARE FOR REFERENCE ONLY.

UNLESS OTHERWISE SPECIFIED, DIMENSIONS ARE IN INCHES [mm] OVERALL CABLE LENGTH TOLERANCE: ≤ 12 [305] = +1 [25] / -0 >12 [305] ≤ 60 [1524] = +2 [51] / -0 >60 [1524] ≤ 120 [3048] = +4 [102] / -0 >120 [3048] ≤ 300 [7620] = +6 [152] / -0 >300 [7620] = +5% / -0% ALL OTHER DIMENSIONAL TOLERANCES: .X = $\pm .2$ [5.08] .XX = $\pm .02$ [51] .XXX = $\pm .005$ [13]	APPROVALS	DATE	50 HIGH STREET NORTH ANDOVER, MA 01845			
	DRAWN BY	11/05/2018			CATEGORY RACK PANELS	
	CHECKED BY	11/05/2018	PRODUCT DESCRIPTION L-COM VENTED 19" RACKMOUNT SHELF 15" DEPTH - 3U			
	APPROVED BY	11/05/2018			CONFIGURATION DETAILS OF UNDIMENSIONED FEATURES MAY VARY	SIZE A
PROJECTION 	COLOR VARIATIONS MAY OCCUR	SCALE: NONE	CAD FILE: RP00013-3.SLDDRW	SHEET 1 OF 1		