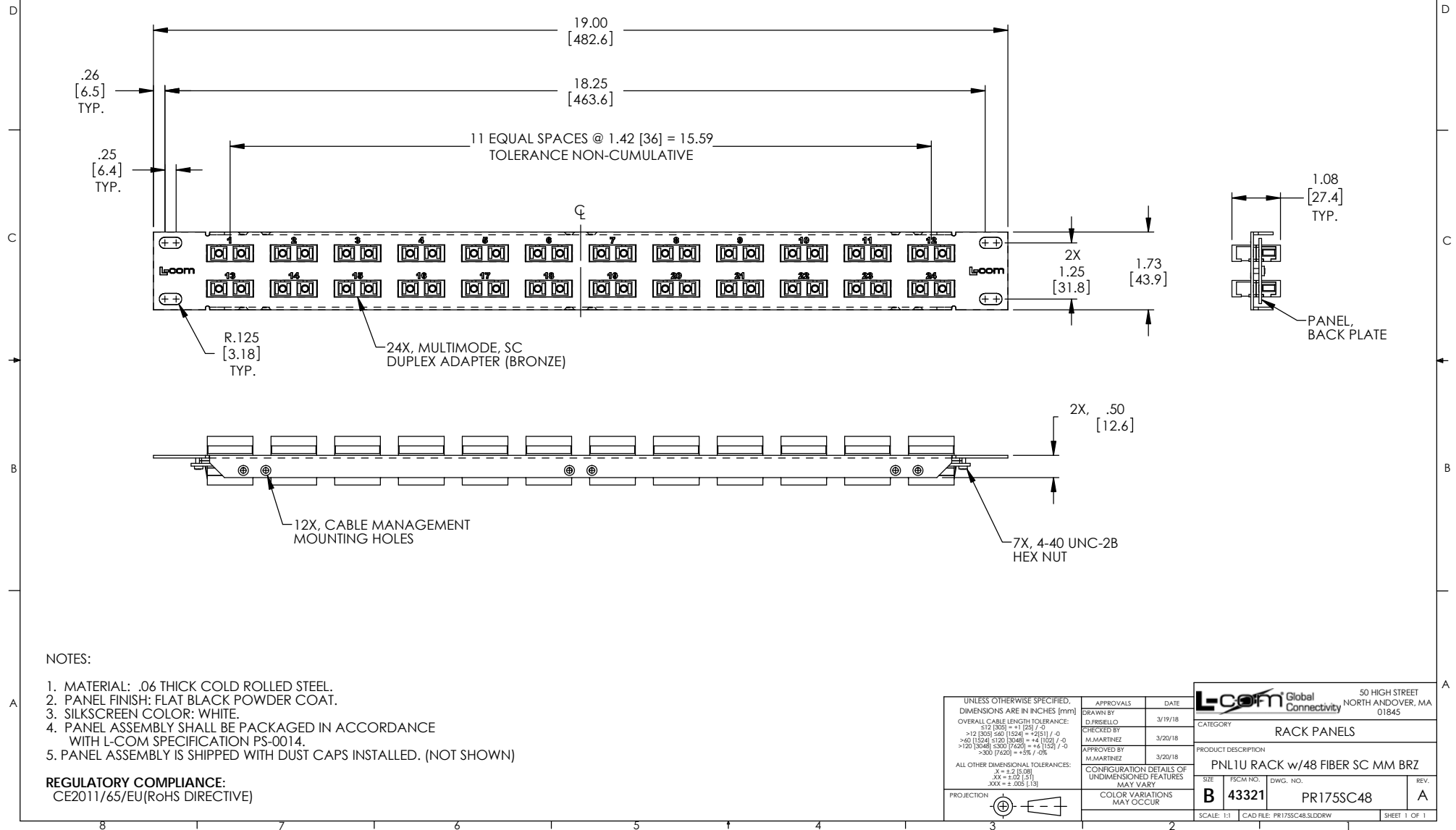


THE INFORMATION CONTAINED IN THIS DRAWING IS THE SOLE PROPERTY OF L-COM, INC. ANY REPRODUCTIONS IN PART OR WHOLE WITHOUT THE WRITTEN PERMISSION OF L-COM, INC. IS PROHIBITED.

REVISIONS			
REV	DESCRIPTION	DATE	CHANGED BY
A	INITIAL RELEASE	3/20/18	D.FRISIELLO



NOTES:

1. MATERIAL: .06 THICK COLD ROLLED STEEL.
2. PANEL FINISH: FLAT BLACK POWDER COAT.
3. SILKSCREEN COLOR: WHITE.
4. PANEL ASSEMBLY SHALL BE PACKAGED IN ACCORDANCE WITH L-COM SPECIFICATION PS-0014.
5. PANEL ASSEMBLY IS SHIPPED WITH DUST CAPS INSTALLED. (NOT SHOWN)


REGULATORY COMPLIANCE:
CE2011/65/EU(RoHS DIRECTIVE)

UNLESS OTHERWISE SPECIFIED,
DIMENSIONS ARE IN INCHES (mm)
OVERALL CABLE LENGTH TOLERANCE:
≤12 [305] ±.1 [25] / -0
>12 [305] ≤60 [1524] = +.2 [51] / -0
>60 [1524] ≤120 [3048] = +.4 [102] / -0
>120 [3048] ≤300 [7620] = +.6 [152] / -0
>300 [7620] = +.8 [203] / -0
ALL OTHER DIMENSIONAL TOLERANCES:
X = ±.2 [5.08]
XX = ±.02 [5.1]
XXX = ±.005 [1.3]

PROJECTION
⊕

APPROVALS
DRAWN BY
D.FRISIELLO
CHECKED BY
M.MARTINEZ
APPROVED BY
M.MARTINEZ
DATE
3/19/18
3/20/18
3/20/18

CONFIGURATION DETAILS OF
UNDIMENSIONED FEATURES
MAY VARY
COLOR VARIATIONS
MAY OCCUR

		50 HIGH STREET NORTH ANDOVER, MA 01845	
CATEGORY RACK PANELS			
PRODUCT DESCRIPTION PNL1U RACK w/48 FIBER SC MM BRZ			
SIZE B	PSCM NO. 43321	DWG. NO. PR175SC48	REV. A
SCALE: 1:1		CAD FILE: PR175SC48.3LDDRW	
		SHEET 1 OF 1	